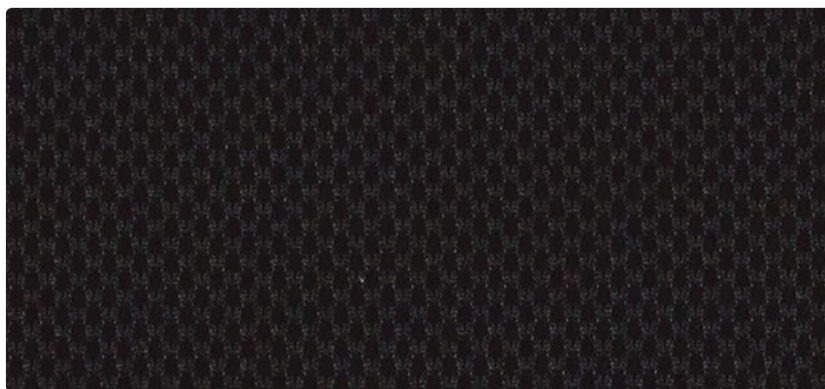


301-034 Caribbean - UFB2353



301-006 Black - FAB0301



301-024 Sapphire - UFB0275



301-019 Marigold - UFB2355



301-013 Limelight - UFB0276



301-026 Sterling - UFB0278



**Application**  
Seating, Acoustic

**Content**  
100% Polyester

**Width**  
54 inches

**Finish**  
None

**Reduced Environmental Impact**  
GREENGUARD Gold Certified



301-014 Sky - UFB2356



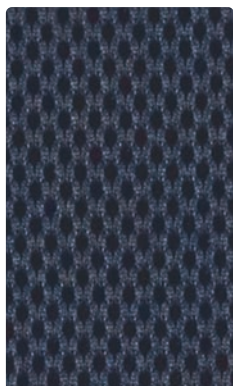
301-009 Cayenne - UFB2357



301-003 Hunter - UFB2358



301-000 Mocha - UFB5134



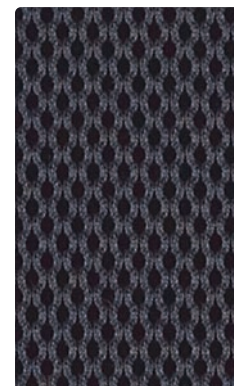
301-004 Ink - UFB2359



301-011 Paprika - UFB2360



301-001 Wine - UFB0277



301-016 Pewter - UFB2361



**TECHNICAL INFORMATION**

Content: 100% Polyester Width: 54" Weight: 16 oz./linear yard	Backing: None Finish: None Cleanability: WS	Approx. Repeat: Non-Matching Directional: Yes Railroaded: No
---------------------------------------------------------------------	---------------------------------------------------	--------------------------------------------------------------------

PERFORMANCE (*Certifications Marks Owned by ACT.)	Test Method	Results
Surface Abrasion: Heavy Duty <b>A*</b>	ASTM-D-4157 (Cotton Duck)	Exceeds 1,002,000 Double Rubs
Breaking Strength: <b>☆☆</b>	ASTM-D-3597/5034 (Grab Test)	Warp 129 lbs / Fill 78 lbs
Pilling Resistance: <b>☆☆</b>	ASTM-D-3512	Class 4.5
Colorfastness to Crocking: <b>☺*</b>	AATCC-8	Dry: Class 4 min / Wet: Class 4 min
Colorfastness to Light: <b>☼*</b>	AATCC-16H	Class 4 at 40 Hours

Class in the colorfastness requirements is based on a numerical scale of 5 for negligible or no color transfer to 1 for very severe color change or color transfer.

**FLAMMABILITY **☼\*****

California Technical Bulletin 117-2013	Passes
California Technical Bulletin 117, Section E	Passes
NFPA 260 (Equivalent to UFAC) Class 1	Passes
ASTM E84 (Unadhered) Class 1 or A	Passes
FMVSS 302	Passes

May comply with California Technical Bulletin 133 when combined with appropriate components.

**REDUCED ENVIRONMENTAL IMPACT**

This product is **GREENGUARD Gold Certified** for low chemical and particle emissions to UL standard **UL 2818** and may contribute to **LEED** certification. For complete information visit [mayerfabrics.com](http://mayerfabrics.com) and [UL.com/gg](http://UL.com/gg).

**CLEANING INFORMATION**

WS: Water/Solvent Cleaner – Spot clean, with a mild solvent, an upholstery shampoo, or the foam from a mild detergent. When using a solvent or dry cleaning product, follow instructions carefully and clean only in a well-ventilated room. Avoid any product that contains carbon tetrachloride or other toxic materials. With either method, pretest a small area before proceeding. Always rinse promptly with clean water.

**ADDITIONAL INFORMATION**

**Custom Capabilities:** All patterns can be custom colored. Minimum yardage applies.  
**Memo Samples:** Please keep this card intact. Individual memo samples can be ordered on our website or by contacting customer service.  
**Color Matching:** Mayer Fabrics always attempts to ship a satisfactory commercial match. Because of industry standard dye lot variation, colors may not match exactly.  
**Digital Swatch Card Color Matching:** Due to color variations on different monitors and color printers, actual swatch colors may vary slightly. Please request a memo sample from Mayer Fabrics to ensure proper color representation.  
**Specifications:** Specifications are correct at the time of printing. Current specifications are available on our website.

For information or assistance with products or services, call us at 800.428.4415 or refer to our website, [www.mayerfabrics.com](http://www.mayerfabrics.com).



GSA Contract # GS-28F-0022P





## WOVEN CRYPTON PLUS COORDINATES

---





UNICOR Woven Crypton Plus Coordinates (L)



**FINALE Grade 4**  
UFB5294 Wasabi



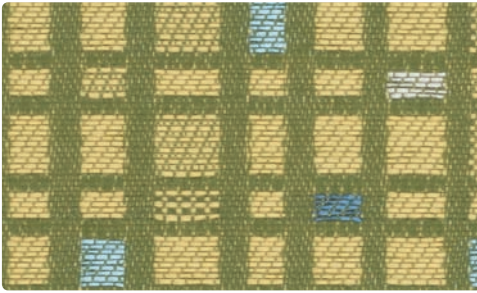
**FINALE Grade 4**  
UFB5298 Juniper



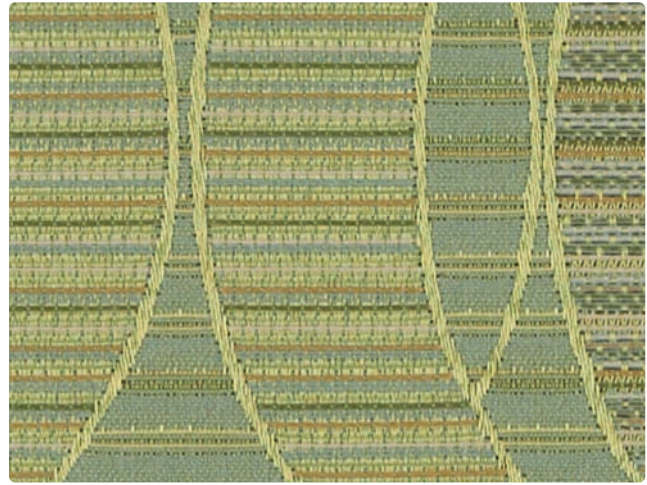
**FINALE Grade 4**  
UFB5295 Marine



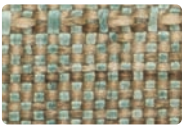
**FINALE Grade 4**  
UFB5289 Royal



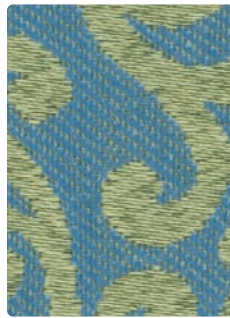
**SOCIAL NETWORK Grade 4**  
UFB5352 Springtime



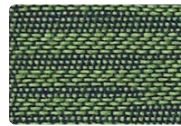
**FAIRY TALES Grade 6**  
UFB5364 Bean Stalk



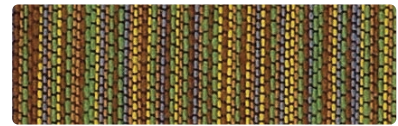
**PASTIME Grade 4**  
UFB5361 Vapor



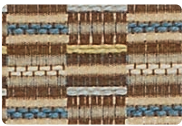
**ARABESQUE Grade 4**  
UFB5372 Aquamarine



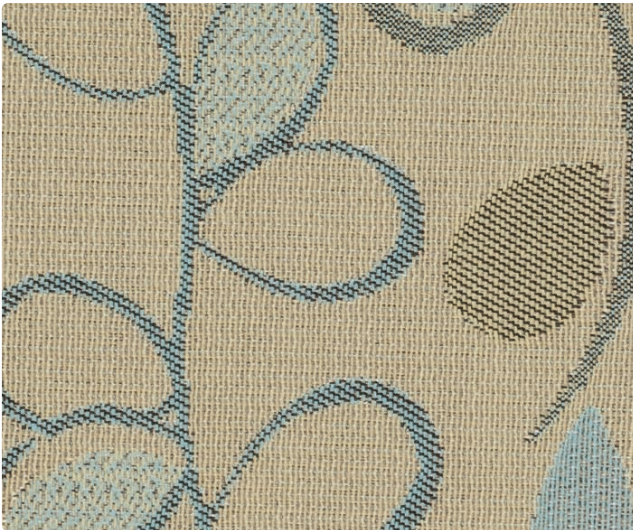
**RATIO Grade 6**  
UFB3402 Jade



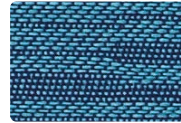
**TIME LINE Grade 4**  
UFB5374 Meadow



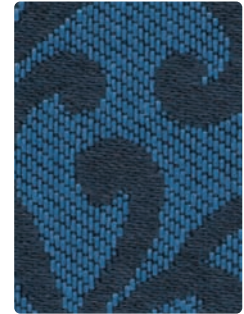
**REPLAY Grade 5**  
UFB5835 Oasis



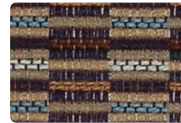
**WHIMSY Grade 6**  
UFB5378 Opal



**RATIO Grade 6**  
UFB3404 Aegean



**ARABESQUE Grade 4**  
UFB5368 Indigo



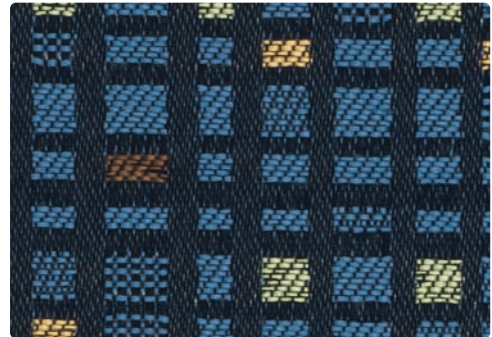
**REPLAY Grade 5**  
UFB3411 Cobalt



**BIG TOP Grade 6**  
UFB5380 Blueberry



**PASTIME Grade 4**  
UFB5358 Marina



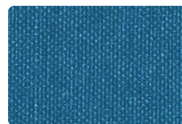
**SOCIAL NETWORK Grade 4**  
UFB5353 Delft



**SILVERWEAVE FR**  
Grade 4 VYN1288  
Willow



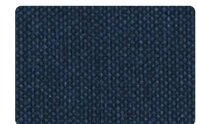
**SILVERWEAVE FR**  
Grade 4 VYN1281  
Jade



**SILVERWEAVE FR**  
Grade 4 VYN1293  
Calypso



**SILVERWEAVE FR**  
Grade 4 VYN1282  
Indigo

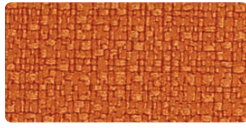


**SILVERWEAVE FR**  
Grade 4 VYN1289  
Baltic





**FINALE** Grade 4  
UFB5288 Wheat



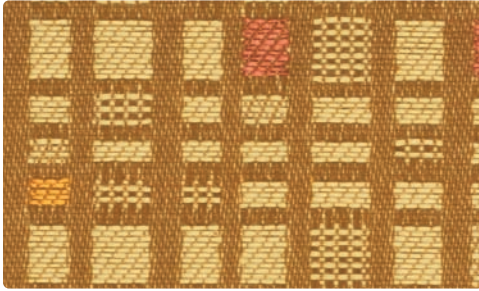
**FINALE** Grade 4  
UFB5297 Saffron



**FINALE** Grade 4  
UFB5292 Paprika



**FINALE** Grade 4  
UFB5293 Port



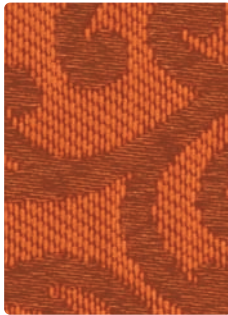
**SOCIAL NETWORK** Grade 4  
UFB5351 Solar



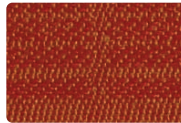
**FAIRY TALES** Grade 6  
UFB5365 Pinocchio



**PASTIME** Grade 4  
UFB5357 Honey



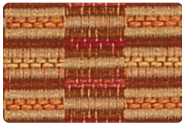
**ARABESQUE** Grade 4  
UFB5371 Tangerine



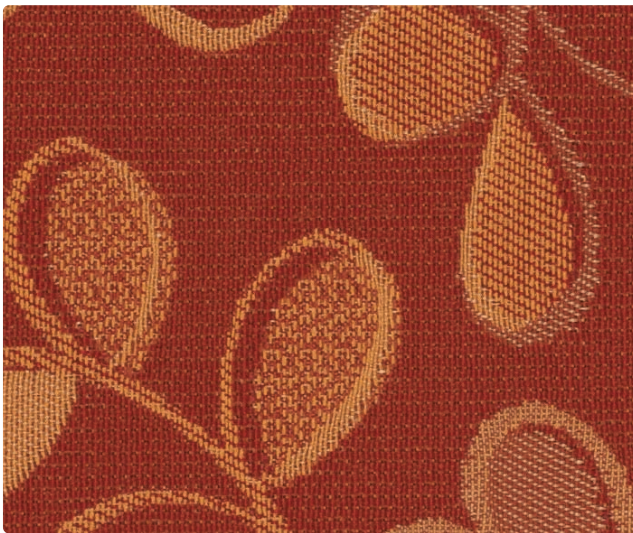
**RATIO** Grade 6  
UFB3401 Persimmon



**TIME LINE** Grade 4  
UFB5373 Fiesta



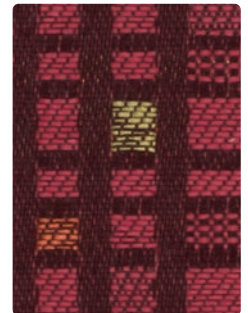
**REPLAY** Grade 6  
UFB3414 Terra Cotta



**WHIMSY** Grade 6  
UFB5377 Paprika



**PASTIME** Grade 4  
UFB5356 Persimmon



**SOCIAL NETWORK** Grade 4  
UFB5350 Fuschia



**REPLAY** Grade 6  
UFB3415 Beachcomber



**BIG TOP** Grade 6  
UFB5379 Candy Apple



**RATIO** Grade 6  
UFB3399 Cinnabar



**ARABESQUE** Grade 4  
UFB5367 Brick



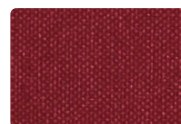
**SILVERWEAVE FR**  
Grade 4 VYN1291  
Tangerine



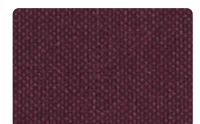
**SILVERWEAVE FR**  
Grade 4 VYN1292  
Amber



**SILVERWEAVE FR**  
Grade 4 VYN1286  
Cayenne



**SILVERWEAVE FR**  
Grade 4 VYN1280  
Cranberry



**SILVERWEAVE FR**  
Grade 4 VYN1283  
Eggplant



UNICOR Woven Crypton Plus Coordinates (R)



**FINALE** Grade 4  
UFB5291 Biscuit



**FINALE** Grade 4  
UFB5296 Parchment



**FINALE** Grade 4  
UFB5287 Mocha



**FINALE** Grade 4  
UFB5290 Ebony



**SOCIAL NETWORK** Grade 4  
UFB5355 Marble



**FAIRY TALES** Grade 6  
UFB5363 Golden Goose



**PASTIME** Grade 4  
UFB5362 Raffia



**ARABESQUE** Grade 4  
UFB5370 Vanilla



**REPLAY** Grade 6  
UFB3413 Mushroom



**RATIO** Grade 6  
UFB3400 Chamois



**TIME LINE** Grade 4  
UFB5375 Beachcomber



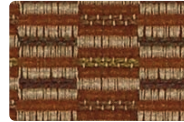
**WHIMSY** Grade 6  
UFB5376 Dusk



**PASTIME** Grade 4  
UFB5360 Mushroom



**ARABESQUE** Grade 4  
UFB5369 Platinum



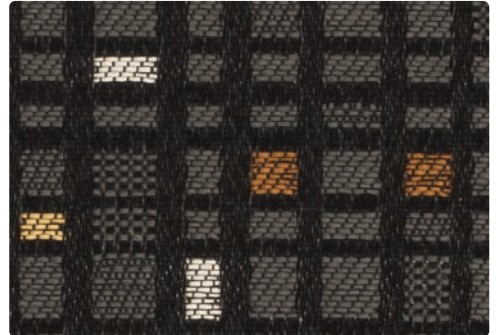
**REPLAY** Grade 6  
UFB5366 Caramel



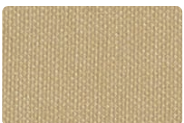
**BIG TOP** Grade 6  
UFB5381 Midnight



**PASTIME** Grade 4  
UFB5359 Graphite



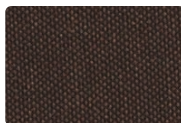
**SOCIAL NETWORK** Grade 4  
UFB5354 Lava



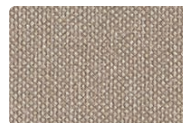
**SILVERWEAVE FR**  
Grade 4 VYN1285  
Camel



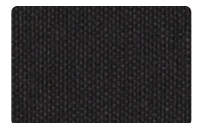
**SILVERWEAVE FR**  
Grade 4 VYN1287  
Walnut



**SILVERWEAVE FR**  
Grade 4 VYN1279  
Cocoa



**SILVERWEAVE FR**  
Grade 4 VYN1290  
Doe

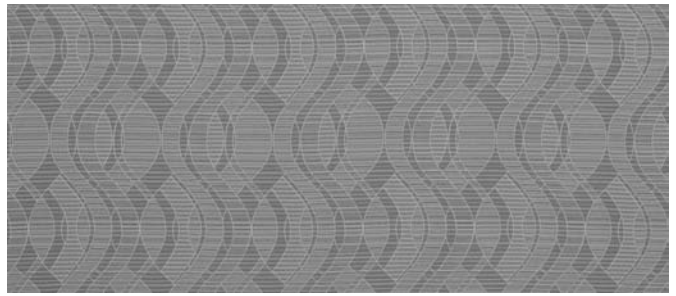


**SILVERWEAVE FR**  
Grade 4 VYN1284  
Graphite

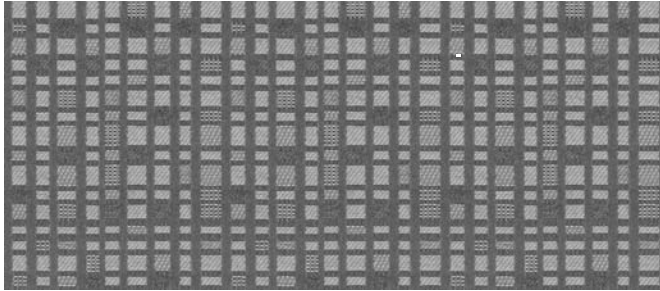




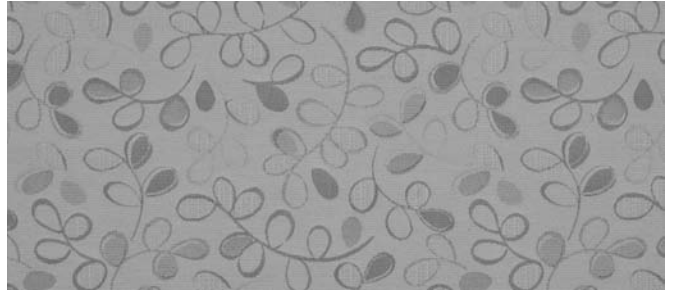
ARABESQUE **Grade 4** - Approx. Repeat: 7" H, 7" V



FAIRY TALES **Grade 6** - Approx. Repeat: 7.5" H, 11.875" V



SOCIAL NETWORK **Grade 4** - Approx. Repeat: 3.5" H, 6" V



WHIMSY **Grade 6** - Approx. Repeat: 13.5" H, 13.5" V

**REDUCED ENVIRONMENTAL IMPACT** - Arabesque, Big Top, Fairy Tales, Finale, Pastime, Ratio, Replay, Social Network, Time Line, Whimsy

All Crypton products are environmentally preferable. Crypton is produced in a world-class manufacturing operation. Crypton is committed to green and has incorporated Crypton's optimized green formulation in all Crypton upholstery, meaning a greener Crypton.



**GREENGUARD Indoor Air Quality Certification** requires products to meet some of the world's toughest chemical emissions standards. GREENGUARD Children & Schools Certification requires those products to meet or exceed additional criteria, including CA Section 01350, to account for the unique health sensitivities of children.



**Recycled Content** - Ratio, Replay, Whimsy

**CRYPTON STAIN RESISTANCE** - Arabesque, Big Top, Fairy Tales, Finale, Pastime, Ratio, Replay, Social Network, Time Line, Whimsy

All listed items have a Class 4-5 rating, which is based on a numerical scale with 5 being the highest for stain removal.

Blood Iodine Ketchup Milk Urine Suntan Lotion Black Coffee Cola

**BACTERIAL AND FUNGUS/MILDEW RESISTANCE** - Arabesque, Big Top, Fairy Tales, Finale, Pastime, Ratio, Replay, Social Network, Time Line, Whimsy

Non leaching Silver Ion Technology microbial protection. Excellent anti-bacterial and anti-fungal properties as evidenced by the following methods: 4 and 5 millimeter-wide growth-free zones produced against the staphylococcus aureus test organism.

Crypton resists fungal growth, test AATCC 30-2004, Aspergillus niger (ATCC #6275).  
Crypton resists bacterial growth, test ISO 20743:2007(E), Klebsiella pneumoniae (ATCC #4352)

EPA Approved – When Crypton's Disinfectant and Deodorizer is used on Crypton Super Fabric, you have a disinfected fabric system. Crypton is the first and only fabric approved by the EPA proven to be disinfected. Crypton's Disinfectant and Deodorizer will kill MRSA, VRSA, IV, E. Coli, hepatitis and many more bacteria and viruses.

**CLEANING INFORMATION** - Arabesque, Big Top, Fairy Tales, Finale, Pastime, Ratio, Replay, Social Network, Time Line, Whimsy

C: Crypton® Cleaning – Crypton fabrics are available in various fiber types, and all Crypton fabrics can be cleaned with soap and water. The ability to use bleach as a cleaner without damaging the fabric is fiber- and dye-dependent. Cryptons with solution-dyed (acrylic, nylon, olefin) fibers and all polyester Crypton selections can be cleaned safely with bleach; 1 part bleach, 9 parts water = 10% bleach, 90% water solution is recommended and thorough rinsing is required. For the best cleaning solution, use **CRYPTON UPHOLSTERY CLEANER**, available from Mayer Fabrics.

**CLEANING INFORMATION** - SilverWeave FR

WS: Water/Solvent Cleaner – Spot clean, with a mild solvent, an upholstery shampoo, or the foam from a mild detergent. When using a solvent or dry cleaning product, follow instructions carefully and clean only in a well-ventilated room. Avoid any product that contains carbon tetrachloride or other toxic materials. With either method, pretest a small area before proceeding.

Bleach Cleanable

Remove stains with one of the following steps:

- Step 1 (eye shadow, mascara, grease, black felt tip pen, crayon, chocolate, suntan lotion, hair and body oils): Remove excess spill with a damp cloth. Clean with a 1:1 mix of Ivory® liquid soap and water. Next, rinse with clean water and dry.
  - Step 2 (red lipstick): Use a straight application of concentrated cleaners such as Formula 409 or Fantastik spray cleaner. Wipe with a clean cloth, rinse with clean water, and dry.
  - Step 3 (blood, urine, feces, oil base paint, tar and asphalt): Use a 1:1 mix of ammonia and water, or a 4:1 mix of bleach and water. Rinse with clean water and dry.
  - Step 4 & 5 (all other touch stains): Step 4: Use a straight application of naphtha (lighter fluid). Rinse thoroughly with clean water and pat surface dry. Step 5: Use a 1:1 mix of isopropyl alcohol and water. If the stain persists, use straight alcohol. Rinse thoroughly with clean water and pat dry.
- Note: For cleaning that requires step 4 or 5, use a soft cotton cloth saturated with the cleaning material and rub the stain in circles 10 times. Pat dry with another soft cotton cloth and check the results.

Please refer to the Mayer Fabrics website or contact customer service for approval of unlisted cleaning agents prior to use.

**For detailed care and cleaning information for each pattern, please refer to the Mayer Fabrics website or contact customer service.**

**SPECIFIC TREATMENTS** - SilverWeave FR

**SILVERGUARD**™ Patterns with **SILVERGUARD**™ are treated with the most advanced silver ion technology, providing a natural germ-fighting defense to help safeguard the consumer against odor and stain causing bacteria. When combined with **PERMABLOK**™, a stain-fighting and abrasion-resistant treatment, **SILVERGUARD**™ delivers the ultimate performance solution.

**PERMABLOK**™ ADVANCED VINYL PROTECTION Protective Finish Anti-Fungal/Anti-Bacterial Protection Anti-Stain Finish/Easily Cleaned Anti-Static Slip Finish Urine Stain Resistant Mildew Resistant Backing and Face Superior Disinfectant Resistance Oil Resistant Sulfide Stain Resistant/All Colors UV Stabilized Pigments

**PERMABLOK**™ ADVANCED VINYL PROTECTION is a proven vinyl protective coating that's engineered to create a tough effective barrier against germs, stains and surface abrasion, three of the biggest problems encountered in today's commercial environments.

# TECHNICAL INFORMATION

## Woven Crypton Plus Coordinates

\*ACT\* Registered Certification Marks

Pattern 54"	Content and Backing	Weight/ Linear Yd.	Pattern Repeat	Finish	Abrasion <sup>☒</sup> * Wyzenbeek	Light * Fastness	Flammability <sup>☒</sup> *	Cleaning Code	Grades
ARABESQUE <i>Directional</i>	100% Polyester Backing: Crypton®	14.75 oz.	7" H 7" V	Crypton®	70,000 Double Rubs	40 hours	Cal. 117-E NFFPA 260 (Equiv. to UFAC)	C	4
BIG TOP <i>Directional</i> <small>the common thread for the Cure</small>	6% Recycled Polyester (4% Pre-/2% Post-Consumer) 94% Polyester Backing: Crypton®	11.6 oz.	3.875" H 0" V	Crypton®	85,000 Double Rubs	40 hours	Cal. 117-E NFFPA 260 (Equiv. to UFAC)	C	6
FAIRY TALES <i>Directional</i> <small>the common thread for the Cure</small>	11% Recycled Polyester (7% Pre-/4% Post-Consumer) 89% Polyester Backing: Crypton®	14.704 oz.	7.5" H 11.875" V	Crypton®	51,000 Double Rubs	40 hours	Cal. 117-E NFFPA 260 (Equiv. to UFAC)	C	6
FINALE <i>Directional</i>	100% Polyester Backing: Crypton®	16 oz.	None	Crypton®	250,000 Double Rubs	60 hours	Cal. 117-E NFFPA 260 (Equiv. to UFAC)	C	4
PASTIME <i>Directional</i>	100% Polyester Backing: Crypton®	20.11 oz.	10" H Random Match V	Crypton®	70,000 Double Rubs	40 hours	Cal. 117-E NFFPA 260 (Equiv. to UFAC)	C	4
RATIO <i>Directional</i>	100% Pre-Consumer Recycled Polyester Backing: Crypton® Green	173 oz.	3.38" H 3.38" V	Crypton® Green	100,000 Double Rubs	60 hours	Cal. 117-E NFFPA 260 (Equiv. to UFAC)	C	6
REPLAY <i>Directional</i>	100% Recycled Polyester (57% Pre-/43% Post-Consumer) Backing: Crypton® Green	16.6 oz.	.625" H .5" V	Crypton® Green	50,000 Double Rubs	40 hours	Cal. 117-E NFFPA 260 (Equiv. to UFAC)	C	5
SILVERWEAVE FR <i>Directional</i>	100% Vinyl/Urethane Topcoat Backing: 100% Hi-Lof™ Polyester	30 oz.	None	SILVERGUARD® PERMABLOK®	930,000 Double Rubs	1000 hours	Cal. 117-E NFFPA 260 (Equiv. to UFAC) (see below)	refer to cleaning section	4
SOCIAL NETWORK <i>Directional</i>	100% Polyester Backing: Crypton®	15.29 oz.	3.5" H 6" V	Crypton®	70,000 Double Rubs	40 hours	Cal. 117-E NFFPA 260 (Equiv. to UFAC)	C	4
TIME LINE <i>Directional</i> <i>Shown Railroaded</i>	54% Cotton, 46% Polyester Backing: Crypton®	15.43 oz.	2.25" H 0" V	Crypton®	111,000 Double Rubs	40 hours	Cal. 117-E NFFPA 260 (Equiv. to UFAC)	C	4
WHIMSY <i>Directional</i>	60% Next Post-Consumer Recycled Polyester, 40% Polyester Backing: Crypton® Green	16.79 oz.	13.5" H 13.5" V	Crypton® Green	50,000 Double Rubs	40 hours	Cal. 117-E NFFPA 260 (Equiv. to UFAC)	C	6

May comply with California Technical Bulletin 133 when combined with appropriate components.

### FLAMMABILITY - SilverWeave FR

BIFMA X5.7	Passes	NFFPA 701 (small scale)	Passes
Boston Fire Dept. Code (BFD 1X-1)	Passes	NY & NJ Port Authority	Passes
FAA/FAR 25.853(a) & Appendix F Part I(a)(ii)	Passes	Federal St. 191A M5903.1	Passes
FMVSS 302	Passes	IMO FTP 2010 Code MSC.307(88), Part 8, 3.1 & 3.2	Passes
IMO A.652(16) 8.2 & 8.3	Passes		

### ADDITIONAL INFORMATION

**Custom Capabilities:** All patterns can be custom colored. Minimum yardage applies.

**Memo Samples:** Please keep this card intact. Individual memo samples can be ordered on our website or by contacting customer service.

**Color Matching:** Mayer Fabrics always attempts to ship a satisfactory commercial match. Because of industry standard dye lot variation, colors may not match exactly.

**Specifications:** Specifications are correct at the time of printing. Current specifications are available on our website.

**For information or assistance with products or services, call us at 800.428.4415 or refer to our website, www.mayerfabrics.com.**



**Big Top and Fairy Tales were inspired by B. Jane Barea, ASID, in support of The Common Thread for the Cure Foundation. Mayer Fabrics will donate 2% of all sales to The Common Thread for the Cure.**



Railroaded: This feature allows reduction of seams and enables smoother furniture tailoring.



Fabric "up the roll" or "regular" position



Fabric "railroaded" or "top selvage" position

All railroaded patterns should be upholstered as shown on card.





**U  
F  
O** UNICOR  
OFFICE  
FURNITURE  
GROUP

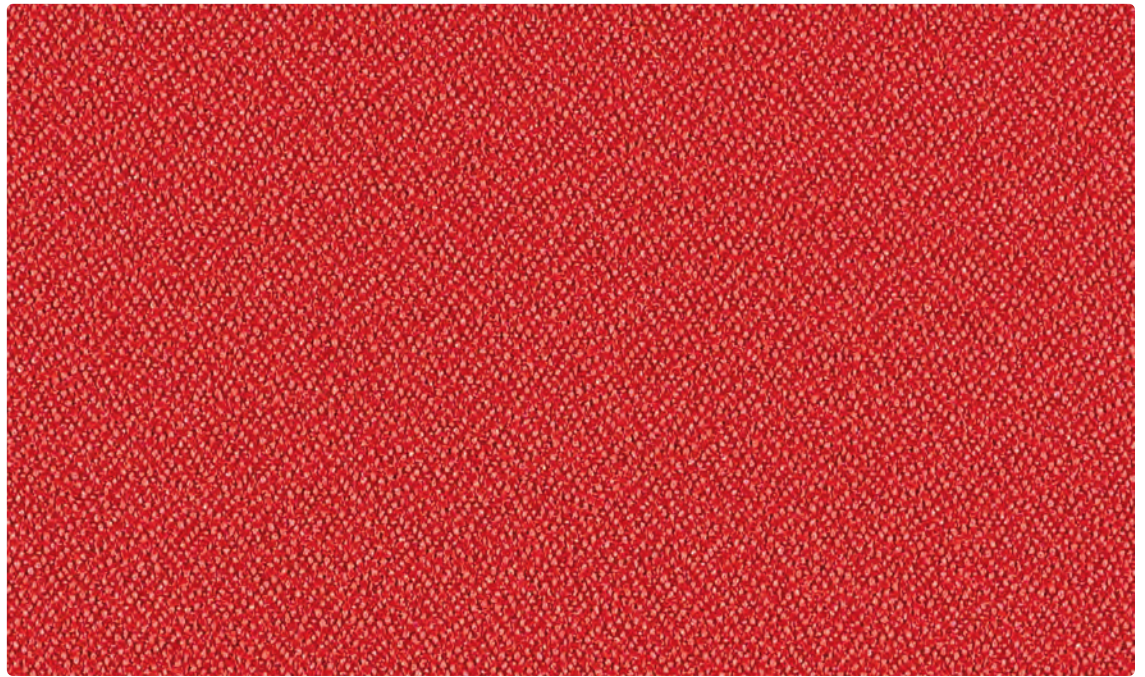
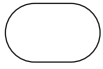


**FOUNDATION10**

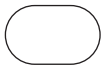
**GRADE 1**



# Upholstery Seating



UFB0349  
Poppy



**Application**  
Upholstery Seating

**Content**  
100% Recycled Polyester

**Width**  
54 inches

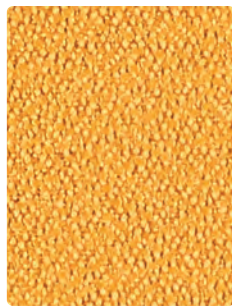
**Abrasion** (Wyzenbeek/Cotton Duck)  
1,000,000 Double Rubs

**Finish**  
Stain Repellent

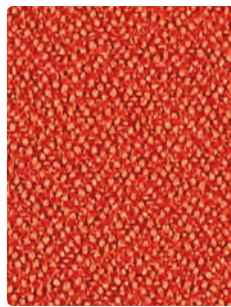
**Reduced Environmental Impact**  
GREENGUARD Gold Certified

**Eco-System®**  
Sustainable, Attainable at Mayer Fabrics.

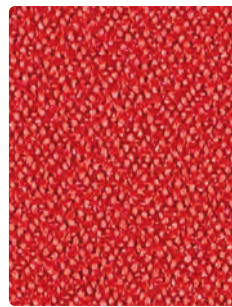
**GRADE 1**



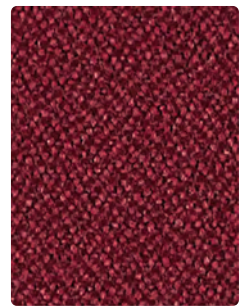
UFB0348  
Ochre



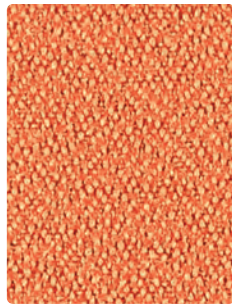
UFB0352  
Tangelo



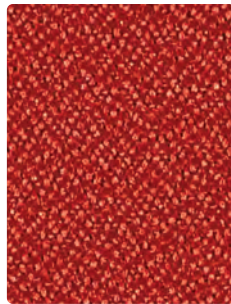
UFB0349  
Poppy



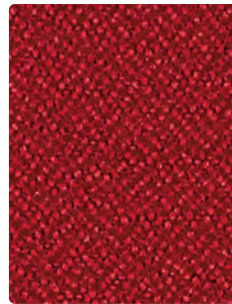
UFB3500  
Wine



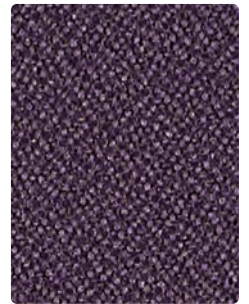
UFB0346  
Marmalade



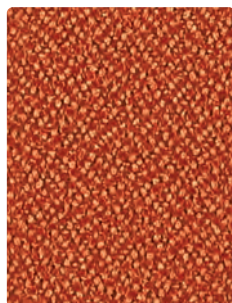
UFB4271  
Rouge



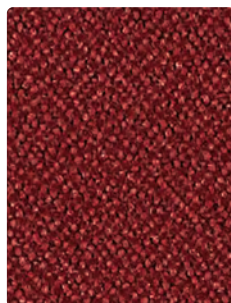
UFB3521  
Flame



UFB3506  
Concord



UFB6419  
Terra Cotta



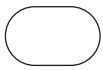
UFB3515  
Cayenne



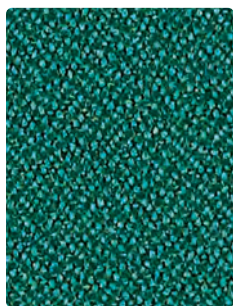
UFB3512  
Merlot



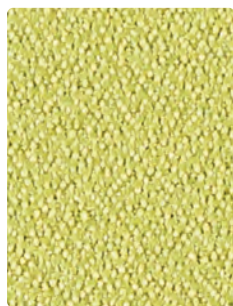
UFB3525  
Navy







UFB4273  
Ocean



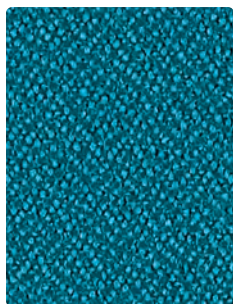
UFB0344  
Celery



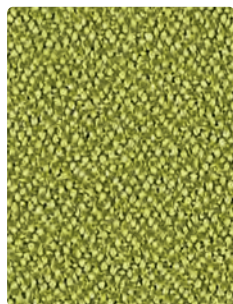
UFB4270  
Buckskin



UFB0347  
Mocha



UFB6430  
Capri



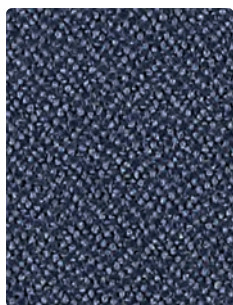
UFB6422  
Apple Green



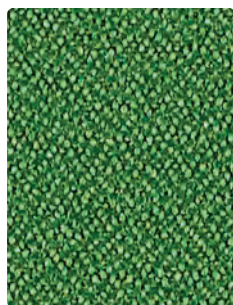
UFB4269  
Bark



UFB0351  
Silver



UFB3517  
Blue Mist



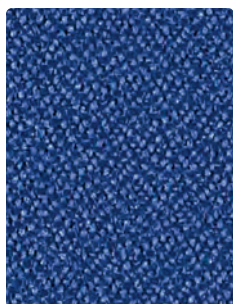
UFB0345  
Grass



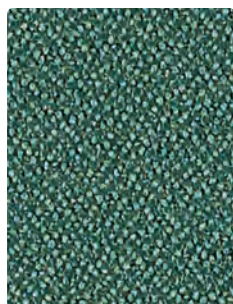
UFB0350  
Seal



UFB3510  
Mercury



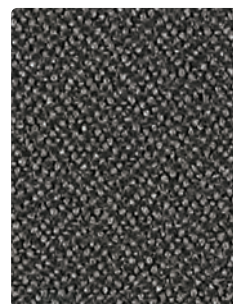
UFB3520  
Parade Blue



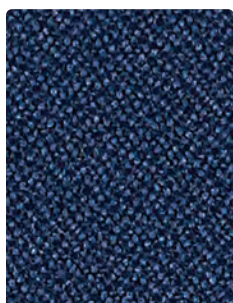
UFB3503  
Peacock



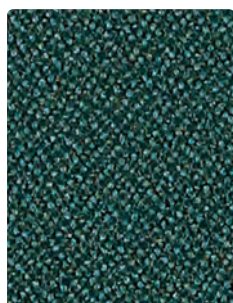
UFB3527  
Jodhpurs



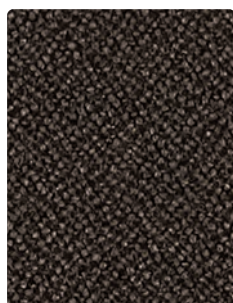
UFB6399  
Graphite



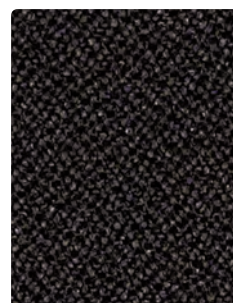
UFB3511  
Sapphire



UFB3505  
Aegean



UFB6400  
Chocolate



UFB3501  
Ebony

**TECHNICAL INFORMATION**

Content: 100% Recycled Polyester (65% Pre-/35% Post-Consumer)

Width: 54"

Weight: 13 oz./linear yard

Backing: None

Finish: Stain Repellent

Approx. Repeat: None

Directional: No

Railroaded: No

**PERFORMANCE**

Surface Abrasion: Heavy Duty ASTM D 3597 (Wyzenbeek/Cotton Duck)

**Results**

Passes 1,000,000 Double Rubs Multiple factors affect fabric durability and appearance retention, including end-user application and proper maintenance. Wyzenbeek results above 100,000 double rubs have not been shown to be an indicator of increased lifespan.

Pilling Resistance ASTM D 3511

Class 4

Colorfastness to Crocking AATCC-8

Dry: Class 4 min / Wet: Class 4

Colorfastness to Light AATCC 16E

Class 4 at 40 hours

**FLAMMABILITY**

California Technical Bulletin 117-2013

NFPA 260/UFAC Class 1

ASTM E84 (Unadhered) Class 1 or A

May comply with California Technical Bulletin 133 when combined with appropriate components.

**REDUCED ENVIRONMENTAL IMPACT**

This product is GREENGUARD Gold Certified for low chemical and particle emissions to UL standard UL 2818 and may contribute to LEED certification. For complete information visit [mayerfabrics.com](http://mayerfabrics.com) and [UL.com/gg](http://UL.com/gg).



The Eco-System icon indicates 100% recycled content.

**TEN YEAR WARRANTY**

FOUNDATION10 is covered by a 10-year limited performance warranty from the date of installation, when used for seating applications. FOUNDATION10 is warranted against wear through (i.e. the complete deterioration of the fabric's structure in a particular area) if properly installed and maintained. This warranty does not cover damage due to abuse, misuse, vandalism, inadequate padding or abrasion from other seating components or furniture, use of improper cleaning agents or methods and use subsequent to ownership by the original purchaser. Mayer Fabrics can provide a copy of the manufacturer's warranty.

If FOUNDATION10 fails to perform during to 10-year warranty period, the affected area of fabric will be repaired or replaced including labor and materials upon written request of the customer.

Except as expressly provided herein, Mayer Fabrics makes no representations or warranties, express or implied, including, without limitation, any warranty of merchantability or fitness of its products for any particular purpose, and hereby disclaim the same.

**CLEANING INFORMATION**

WS: Water/Solvent Cleaner

**ADDITIONAL INFORMATION**

**Custom Capabilities:** All patterns can be custom colored. Minimum yardage applies.

**Digital Swatch Card Color Matching:** Due to color variations on different monitors and color printers, actual swatch colors may vary slightly. Please request a memo sample from Mayer Fabrics to ensure proper color representation.

**Specifications:** Specifications are correct at the time of printing. Current specifications are available on our website.



This fabric meets or exceeds these ACT performance guidelines. \*Certification Marks owned by ACT\*



This 100% polyester fabric is included in the Underwriter's Laboratory Fabric Recognition Program. Additional testing of this U.L. recognized component is not required on approved panels from participating manufacturers.



Water and Stain Repellent Finish

UN1350CD

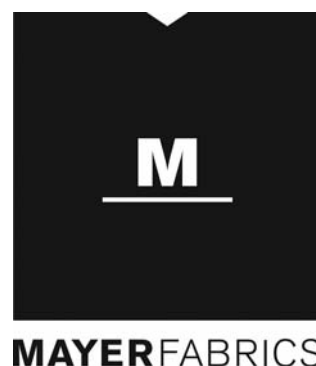






## VINYL III COORDINATES

---



UNICOR Vinyl III Coordinates (L)



**CONTEMPO FR** Grade 3  
VYN1219 Willow



**CONTEMPO FR** Grade 3  
VYN1224 Oregano



**CONTEMPO FR** Grade 3  
VYN1225 Surf



**CONTEMPO FR** Grade 3  
VYN1228 Teal



**IMAGES FR** Grade 3  
VYN1244 Wasabi



**WILLOW FR** Grade 2  
VYN1259 Green Tea



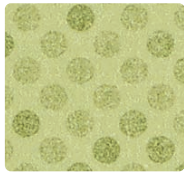
**CURLICUE FR** Grade 3  
VYN1232 Basil



**BLOCKS FR** Grade 2  
VYN0066 Meadow



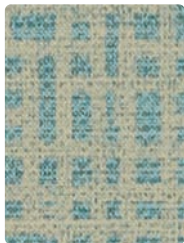
**CHARETTE FR** Grade 3  
VYN1212 Hedge



**MICRO DOT FR** Grade 3  
VYN1254 Fern



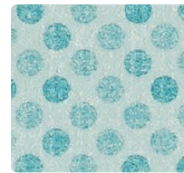
**LINEN FR** Grade 2  
VYN1247 Green Tea



**CHARETTE FR** Grade 3  
VYN1216 Aqua



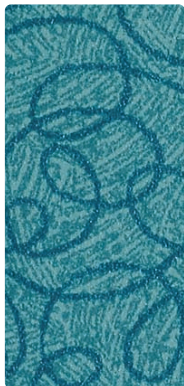
**IMAGES FR** Grade 3  
VYN1245 Turquoise



**MICRO DOT FR** Grade 3  
VYN1257 Turquoise



**LINEN FR** Grade 2  
VYN1250 Aquamarine



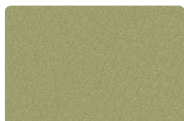
**CURLICUE FR** Grade 3  
VYN1234 Aqua



**WILLOW FR** Grade 2  
VYN1263 Aquamarine



**BLOCKS FR** Grade 2  
VYN0065 Lagoon



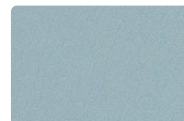
**DURANGO FR** Grade 1  
VYN4007 Jade



**DURANGO FR** Grade 1  
VYN4003 Basil



**DURANGO FR** Grade 1  
VYN1239 Calypso

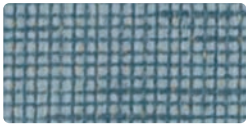


**DURANGO FR** Grade 1  
VYN1237 Cyan



**DURANGO FR** Grade 1  
VYN4002 Aegean

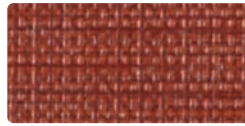




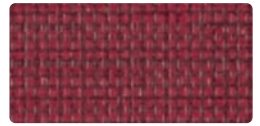
**CONTEMPO FR** Grade 3  
VYN1220 Denim



**CONTEMPO FR** Grade 3  
VYN1227 Caramel



**CONTEMPO FR** Grade 3  
VYN1223 Sunset



**CONTEMPO FR** Grade 3  
VYN1218 Scarlet



**BLOCKS FR** Grade 2  
VYN0064 Grove



**CURLICUE FR** Grade 3  
VYN1230 Tangerine



**IMAGES FR** Grade 3  
VYN1243 Tangerine



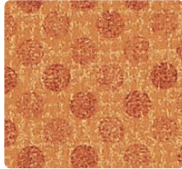
**WILLOW FR** Grade 2  
VYN1262 Tangerine



**CHARETTE FR** Grade 3  
VYN1056 Paprika



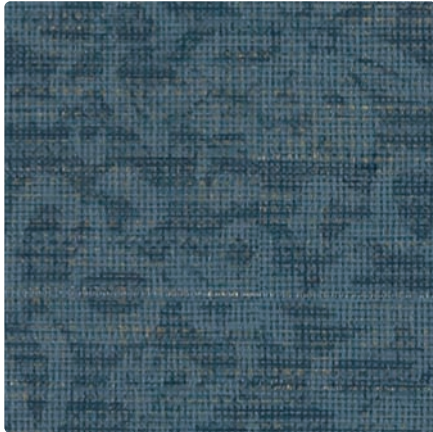
**LINEN FR** Grade 2  
VYN1251 Russet



**MICRO DOT FR** Grade 3  
VYN1256 Cinnamon



**CHARETTE FR** Grade 3  
VYN1215 Cerulean



**IMAGES FR** Grade 3  
VYN1241 Marina



**MICRO DOT FR** Grade 3  
VYN1253 Blue Ice



**LINEN FR** Grade 2  
VYN1248 Marine



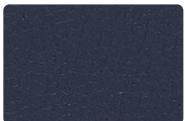
**CURLICUE FR** Grade 3  
VYN1233 Azure



**WILLOW FR** Grade 2  
VYN1260 Marine



**CHARETTE FR** Grade 3  
VYN1213 Sapphire



**DURANGO FR** Grade 1  
VYN4010 Sapphire



**DURANGO FR** Grade 1  
VYN4011 Sepia



**DURANGO FR** Grade 1  
VYN1238 Cordovan



**DURANGO FR** Grade 1  
VYN4012 Tangelo



**DURANGO FR** Grade 1  
VYN4009 Paprika



UNICOR Vinyl III Coordinates (R)



**CONTEMPO FR** Grade 3  
VYN1222 Bisque



**CONTEMPO FR** Grade 3  
VYN1226 Buff



**CONTEMPO FR** Grade 3  
VYN1221 Greige



**CONTEMPO FR** Grade 3  
VYN1217 Espresso



**IMAGES FR** Grade 3  
VYN1242 Almond



**WILLOW FR** Grade 2  
VYN1258 Maize



**CHARETTE FR** Grade 3  
VYN1214 Alabaster



**BLOCKS FR** Grade 2  
VYN0067 Seashore



**CURLICUE FR** Grade 3  
VYN1231 Filigree



**MICRO DOT FR** Grade 3  
VYN1255 Alabaster



**LINEN FR** Grade 2  
VYN1246 Maize



**CHARETTE FR** Grade 3  
VYN1057 Caramel



**WILLOW FR** Grade 2  
VYN1261 Natural



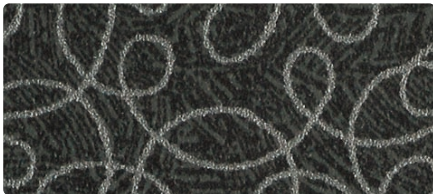
**LINEN FR** Grade 2  
VYN1249 Natural



**MICRO DOT FR** Grade 3  
VYN1252 Latte



**IMAGES FR** Grade 3  
VYN1240 Walnut



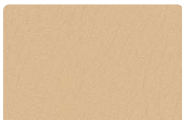
**CURLICUE FR** Grade 3  
VYN1229 Graphite



**CHARETTE FR** Grade 3  
VYN1055 Bark



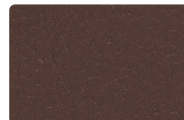
**DURANGO FR** Grade 1  
VYN4001 Alabaster



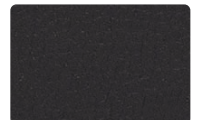
**DURANGO FR** Grade 1  
VYN1235 Natural



**DURANGO FR** Grade 1  
VYN1236 Bombay

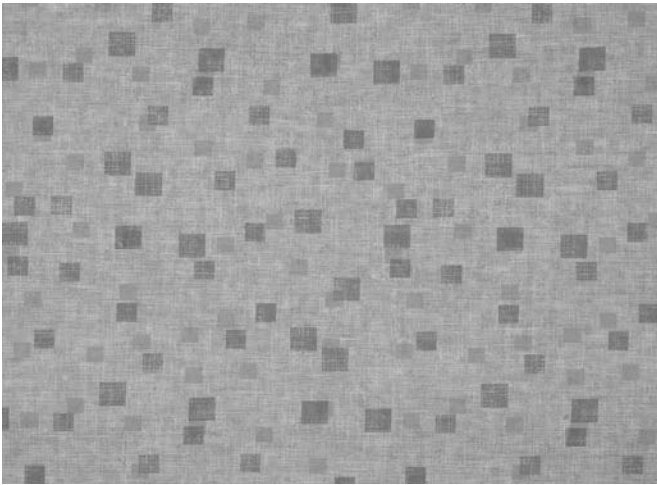


**DURANGO FR** Grade 1  
VYN4006 Cocoa

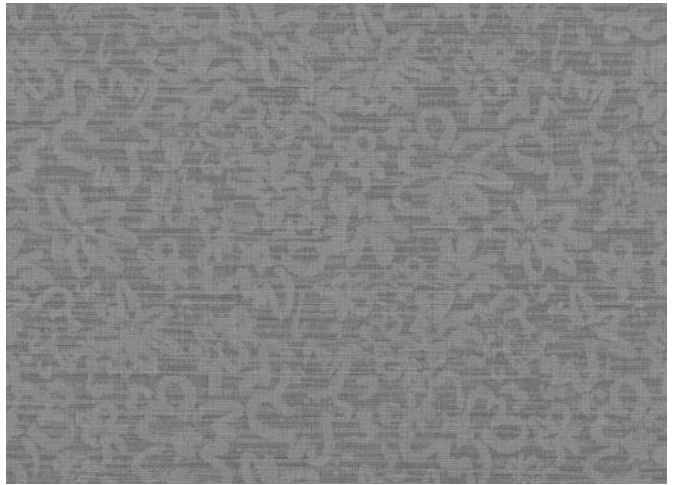


**DURANGO FR** Grade 1  
VYN4004 Black





BLOCKS **Grade 2** - Approx. Repeat: 9.25" H, 8.5" V Random Match



IMAGES **Grade 3** - Approx. Repeat: 6" H, 6" V Random Match



WILLOW **Grade 2** - Approx. Repeat: 27" H, 19" V Random Match

## CARE AND CLEANING INFORMATION

**WS:** Water/Solvent Cleaner – Spot clean, with a mild solvent, an upholstery shampoo, or the foam from a mild detergent. When using a solvent or dry cleaning product, follow instructions carefully and clean only in a well-ventilated room. Avoid any product that contains carbon tetrachloride or other toxic materials. With either method, pretest a small area before proceeding.

**Normal Care and Cleaning:** Remove ordinary dirt and smudges with a mild soap and water solution and a clean, soft cloth or towel. Dry with a soft, lint-free cloth or towel. **CAUTION:** The use of vinyl "conditioners" or "protectants" is not recommended and should be avoided on vinyl upholstery treated with PreFixx® protective finish.

**Disinfecting:** Upholstery with PreFixx® protective finish can be disinfected with a diluted household bleach (sodium hypochlorite) solution (1:10 bleach to water ratio). Rinse with fresh water. Dry with a clean towel.

### Special Cleaning Problems

Although upholstery treated with PreFixx® protective finish is resistant to most common stains, the dyes and pigments in some staining agents have the ability to create a permanent stain if not treated properly. To clean difficult stains from upholstery treated with PreFixx® protective finish, locate the staining agent in the lists below and follow its recommended cleaning method. For best results, treat all stains immediately.

**Cleaning Tip:** To determine the method and type of cleaners, the source of the stain should be identified.

**Staining Agents:** Baby oil, ketchup, chocolate, motor oil, olive oil, grape juice, urine, blood, hair oil tonic, tea, coffee and betadine. Use Method 1

**Staining Agents:** Eye shadow, crayon and grease. Use Method 1. If stains remain, use Method 2.

**Staining Agents:** Tobacco tar (nicotine), permanent felt tip marker, yellow mustard, lipstick, ballpoint pen and spray paint. Use Method 1. If stains remain, use Method 2. For stubborn stains still remaining, use Method 3.

The recommended cleaners used in Cleaning Methods 1, 2, and 3 are progressively more aggressive. Often it is better to begin with the least aggressive cleaner, and move to the next strongest only if the stain remains. NEVER EXCEED a staining agent's recommended cleaner or cleaning method, however.

**Method 1:** Use Formula 409® All-Purpose Spray Cleaner or Fantastik® Spray Cleaner with a soft cloth or damp sponge. Rinse area with fresh water then dry with a clean, lint-free cloth.

**Method 2:** Use a solvent-type cleaner\*, such as rubbing (isopropyl) alcohol 91%. Rinse cleaned area with fresh water then dry with a clean, lint-free cloth.

**Method 3:** Use a strong, active solvent cleaner\* diluted in water (70% water/30% solvent cleaner) such as nail polish remover (acetone/water). Clean with a soft cloth or damp sponge. Stain should be removed with less than six (6) rubs. If the stain persists after six rubs, the stain has set and probably cannot be removed. Rinse cleaned area with fresh water, then dry with a clean, lint-free cloth.

\*CAUTION: Some solvents are highly flammable. Exercise proper care in cleaning and notify personnel in area of danger. Wear rubber gloves during all cleaning activities. Use caution in cleaning around buttons, stitching and wooden or decorative trim, since these solvents could seriously damage such areas.

FORMULA 409 is a registered trademark of the Chlorox Company

FANTASTIK is a registered trademark of Dow Chemical Products Inc.

**For detailed care and cleaning information for each pattern, please refer to the Mayer Fabrics website or contact customer service.**

## SPECIFIC TREATMENTS




**PreFixx® Protective Finish** Anti-Microbial/Anti-Bacterial Protection Anti-Stain Finish/Easily Cleaned Anti-Static Slip Finish Urine Stain Resistant  
Mildew Resistant Superior Disinfectant Resistance Oil Resistant Sulfide Stain Resistant/All Colors UV-Stabilized Pigments

**PreFixx®** The first protective finish that starts where other finishes finish. With PreFixx protection, it is possible to remove stains that could never be removed before. Now, with cost-proven stain resistance and cleanability, plus superior abrasion resistance, PreFixx protected vinyls protect you from high maintenance and frequent reupholstery costs.

# TECHNICAL INFORMATION

## Vinyl III Coordinates

\*ACT® Registered Certification Marks

Pattern 54"	Content and Backing	Weight/ Linear Yd.	Pattern Repeat	Finish	Abrasion  * Wyzenbeek	Light  * Fastness	Flammability  *	Cleaning	Grades
BLOCKS FR <i>Directional</i>	100% Vinyl Backing: Polyester Knit	28 oz.	9.25" H 8.5" V Random Match	PreFixx®	1,300,000 Double Rubs	650 hours	Cal. 117-E NFPA 260 (Equiv. to UFAC) (see below)	refer to cleaning section	<b>2</b>
CHARETTE FR <i>Directional</i>	100% Vinyl Backing: Polyester Knit	28 oz.	17" H 17" V Random Match	PreFixx®	1,300,000 Double Rubs	650 hours	Cal. 117-E NFPA 260 (Equiv. to UFAC) (see below)	refer to cleaning section	<b>3</b>
CONTEMPO FR <i>Directional</i>	100% Vinyl Backing: Polyester Knit	28 oz.	Non- Matching	PreFixx®	1,300,000 Double Rubs	650 hours	Cal. 117-E NFPA 260 (Equiv. to UFAC) (see below)	refer to cleaning section	<b>3</b>
CURLICUE FR <i>Directional</i>	100% Vinyl Backing: Polyester Knit	28 oz.	Non- Matching	PreFixx®	1,300,000 Double Rubs	650 hours	Cal. 117-E NFPA 260 (Equiv. to UFAC) (see below)	refer to cleaning section	<b>3</b>
DURANGO FR	100% Vinyl Backing: 100% Polyester	30 oz.	None	PreFixx®	1,000,000 Double Rubs	650 hours	Cal. 117-E NFPA 260 (Equiv. to UFAC) (see below)	refer to cleaning section	<b>1</b>
IMAGES FR <i>Directional</i>	100% Vinyl Backing: Polyester Knit	28 oz.	6" H 6" V Random Match	PreFixx®	1,300,000 Double Rubs	650 hours	Cal. 117-E NFPA 260 (Equiv. to UFAC) (see below)	refer to cleaning section	<b>3</b>
LINEN FR <i>Directional</i>	100% Vinyl Backing: Polyester Knit	28 oz.	Non- Matching	PreFixx®	1,300,000 Double Rubs	650 hours	Cal. 117-E NFPA 260 (Equiv. to UFAC) (see below)	refer to cleaning section	<b>2</b>
MICRO DOT FR <i>Directional</i>	100% Vinyl Backing: Polyester Knit	28 oz.	.25" H .25" V	PreFixx®	1,300,000 Double Rubs	650 hours	Cal. 117-E NFPA 260 (Equiv. to UFAC) (see below)	refer to cleaning section	<b>3</b>
WILLOW FR <i>Directional</i>	100% Vinyl Backing: Polyester Knit	28 oz.	27" H 19" V Random Match	PreFixx®	1,300,000 Double Rubs	650 hours	Cal. 117-E NFPA 260 (Equiv. to UFAC) (see below)	refer to cleaning section	<b>2</b>

May comply with California Technical Bulletin 133 when combined with appropriate components.

### FLAMMABILITY

**Blocks FR, Charette FR, Contempo FR, Curlicue FR, Durango, Images FR, Linen FR, Micro Dot FR, Willow FR**

BIFMA	Passes	FMVSS 302	Passes
Boston Fire Dept. Code (BFD 1X-1)	Passes	NFPA 701 (small scale)	Passes
FAA/FAR 25.853(a) & Appendix F Part I(a)(ii)	Passes	NY & NJ Port Authority	Passes
Fed. Spec. CID A-A-2950/supersedes CCC-A-680A	Passes		

**Blocks FR, Curlicue FR, Linen FR, Micro Dot FR, Willow FR**

ASTM E84 (Adhered) Class 1 or A; IMO A.652(16) 8.2 & 8.3

### ADDITIONAL INFORMATION

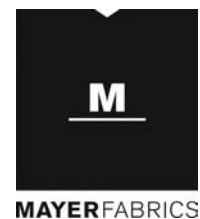
**Custom Capabilities:** All patterns can be custom colored. Minimum yardage applies.

**Memo Samples:** Please keep this card intact. Individual memo samples can be ordered on our website or by contacting customer service.

**Color Matching:** Mayer Fabrics always attempts to ship a satisfactory commercial match. Because of industry standard dye lot variation, colors may not match exactly.

**Specifications:** Specifications are correct at the time of printing. Current specifications are available on our website.

**For information or assistance with products or services, call us at 800.428.4415 or refer to our website, [www.mayerfabrics.com](http://www.mayerfabrics.com).**







398-014 Moody Blue





398-002 Chrysalis



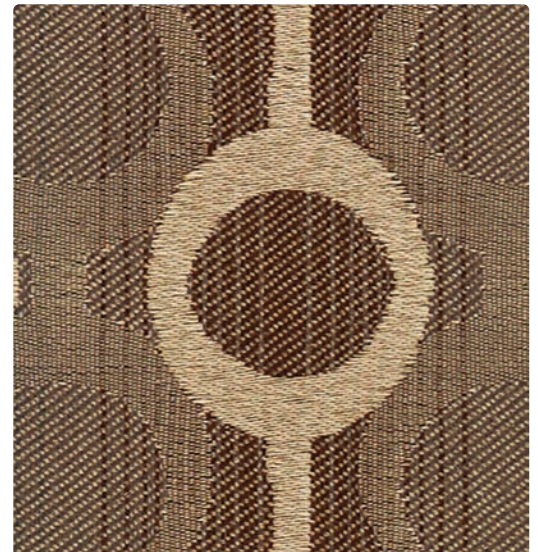
398-003 Limeade



398-013 Oasis



398-004 Tattoo



398-000 Honeycomb



Grade 3

**Application**  
Seating

**Content**  
100% Polyester

**Width**  
54 inches

**Abrasion**  
Passes 60,000 Double Rubs

**Finish**  
Stain Repellent

**Reduced Environmental Impact**  
GREENGUARD Gold Certified



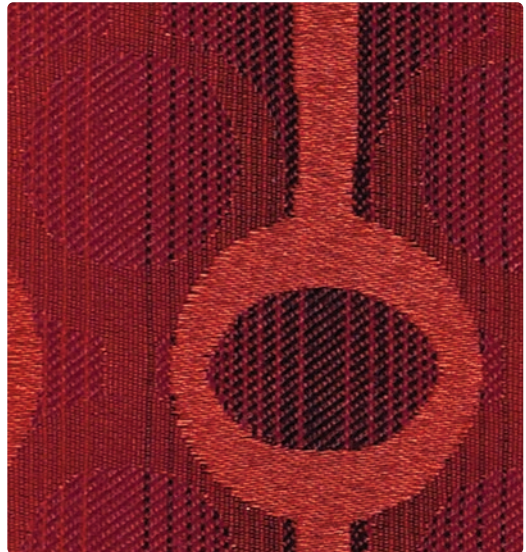




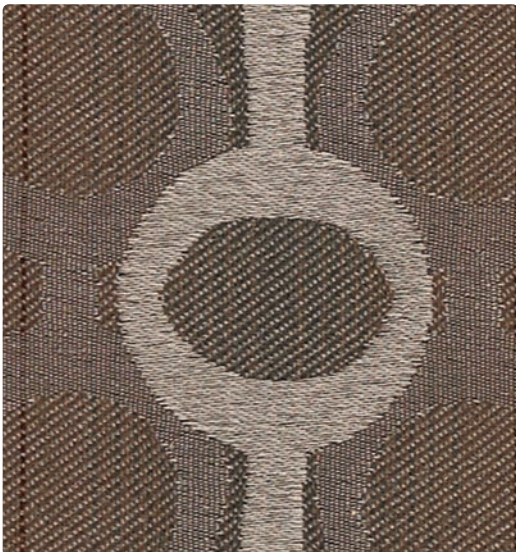
398-007 Sea Salt



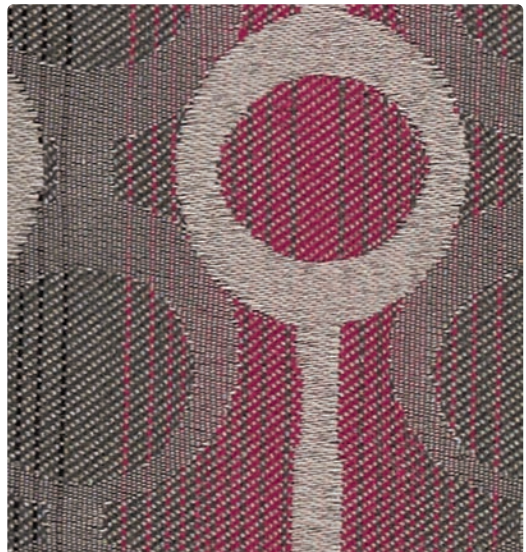
398-009 Fruit Punch



398-001 Cardinal



398-006 Java



398-016 Cyberspace

## TECHNICAL INFORMATION

Content: 100% Polyester Width: 54" Weight: 15.392 oz./linear yd.	Backing: Acrylic Finish: Stain Repellent Cleaning Code: WS, BC	Approx. Repeat: 3.625" H, 4.375" V Directional: Yes Shown Railroaded: Yes
------------------------------------------------------------------------	----------------------------------------------------------------------	---------------------------------------------------------------------------------

## PERFORMANCE (Certification Marks Owned by ACT.)

Test Method	Results
Surface Abrasion: Heavy Duty <b>A</b> *	ASTM D 4157 (Cotton Duck) Passes 60,000 Double Rubs
Breaking Strength: <b>✳</b> *	ASTM D 5034 (Grab Test) Warp 157 lbs/Fill 164 lbs
Seam Slippage: <b>✳</b> *	ASTM D 4034 Warp 77 lbs/Fill 78 lbs
Pilling Resistance: <b>✳</b> *	ASTM D 3511 Class 5
Colorfastness to Crocking: <b>☉</b> *	AATCC 8 Dry: Class 4 min / Wet: Class 3 min
Colorfastness to Light: <b>☼</b> *	AATCC 16 Class 4 min at 40 hours

## FLAMMABILITY **🔥**\*

California Technical Bulletin 117-2013	Passes
NFPA 260 (Equivalent to UFAC) Class 1	Passes
May comply with California Technical Bulletin 133 when combined with appropriate components.	

## REDUCED ENVIRONMENTAL IMPACT

**GREENGUARD Gold Certified products are tested for low chemical emissions to standard UL 2818. For more information, visit [UL.com/gg](http://UL.com/gg).**

## CLEANING INFORMATION

**WS:** Water/Solvent Cleaner – Spot clean with a mild solvent, an upholstery shampoo, or the foam from a mild detergent. When using a solvent or dry cleaning product, follow instructions carefully and clean only in a well-ventilated room. Avoid any product that contains carbon tetrachloride or other toxic materials. With either method, pretest a small area before proceeding. Always rinse promptly with clean water.

**BC: Bleach Cleanable** - 1 part bleach, 9 parts water = 10% bleach, 90% water solution. Do not clean/disinfect fabric for longer than 10 minutes using the 10% bleach solution. Always rinse promptly with clean water after applying the bleach solution. Failure to do so will void any and all warranties.

## ADDITIONAL INFORMATION

**Custom Capabilities:** All patterns can be custom colored. Minimum yardage applies.

**Memo Samples:** Please keep this card intact. Individual memo samples can be ordered on our website or by contacting customer service.

**Fabric Color Matching:** Mayer Fabrics always attempts to ship a satisfactory commercial match. Because of industry standard dye lot variation, colors may not match exactly.

**Digital Swatch Card Color Matching:** Due to color variations on different monitors and color printers, actual swatch colors may vary slightly. Please request a memo sample from Mayer Fabrics to ensure proper color representation.

**Specifications:** Specifications are correct at the time of printing. Current specifications are available on our website.

**For information or assistance with products or services, call us at 800.428.4415 or refer to our website, [www.mayerfabrics.com](http://www.mayerfabrics.com).**



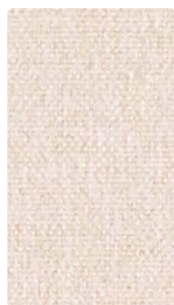
Water and Stain Repellent Finish



**MAYERFABRICS**

**GSA Contract #GS-28F-0022P**





621-007  
Winter



621-046  
Light Grey



621-056  
Dew



621-036  
Dapper



621-017  
Fawn



621-002  
Topaz



621-013  
Citron



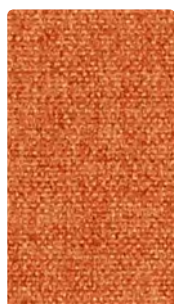
621-023  
Eucalyptus



621-033  
Opal



621-003  
Cactus



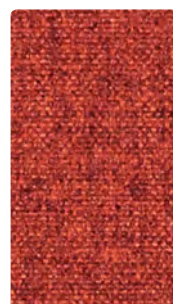
621-019  
Tangelo



621-011  
Tomato



621-001  
Ruby



621-009  
Persimmon



621-008  
Plum



621-043  
Aquamarine



621-053  
Aegean



621-014  
Indigo



621-005  
Purple



621-004  
Midnight



621-000  
Mink



621-026  
Pewter



621-016  
Charcoal



621-010  
Espresso



621-006  
Bitumen

Grade 1

**Application**  
Upholstery Seating

**Content**  
100% Polyester

**Width**  
54 inches

**Abrasion** (Wyzenbeek/Cotton Duck)  
Passes 100,000 Double Rubs

**Finish**  
Stain Repellent – PFOA Free

**Reduced Environmental Impact**  
GREENGUARD Certified



## TECHNICAL INFORMATION

Content: 100% Polyester

Width: 54"

Backing: 100% Polyester Knit

Approx. Repeat: None

Weight: 15 oz./linear yard

Finish: Stain Repellent – PFOA Free

Directional: Yes

Railroaded: No

## PERFORMANCE

Surface Abrasion: Heavy Duty ASTM D 4157  
(Wyzenbeek/Cotton Duck)

Pilling Resistance ASTM D 3511

Colorfastness to Crocking AATCC-8

Colorfastness to Light AATCC 16

## Results

Passes 100,000 Double Rubs

Class 5

Dry: Class 4 min / Wet: Class 4 min

Class 4 at 40 hours

## FLAMMABILITY

California Technical Bulletin 117-2013

NFPA 260/UFAC Class 1

ASTM E84 (Unadhered) Class 1 or A

May comply with California Technical Bulletin 133 when combined with appropriate components.

## REDUCED ENVIRONMENTAL IMPACT

This product is **GREENGUARD Gold Certified for low chemical and particle emissions to UL standard UL 2818 and may contribute to LEED certification.** For complete information visit [mayerfabrics.com](http://mayerfabrics.com) and [UL.com/gg](http://UL.com/gg).

## CLEANING INFORMATION

W: Water-Based Cleaner

## ADDITIONAL INFORMATION

**Custom Capabilities:** All patterns can be custom colored. Minimum yardage applies.

**Digital Swatch Card Color Matching:** Due to color variations on different monitors and color printers, actual swatch colors may vary slightly. Please request a memo sample from Mayer Fabrics to ensure proper color representation.

**Specifications:** Specifications are correct at the time of printing. Current specifications are available on our website.



This fabric meets or exceeds these ACT performance guidelines.  
\*Certification Marks owned by ACT®



Water and Stain  
Repellent Finish



**MAYER**FABRICS





419-017  
Almond



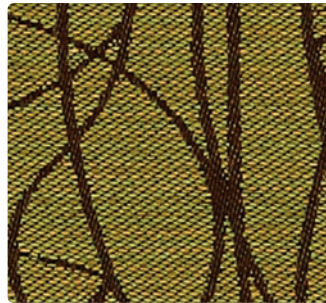
419-009  
Blaze



419-000  
Bark



419-007  
Sandstone



419-003  
Pistachio



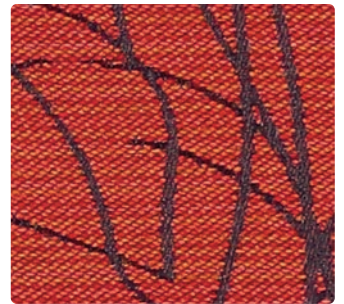
419-002  
Dijon



419-016  
Greystone



419-014  
Surf



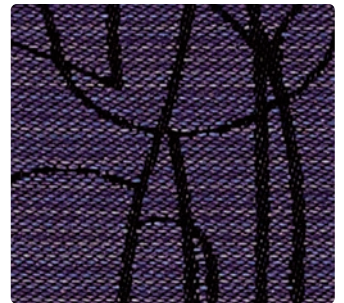
419-001  
Pomegranate



419-006  
Basalt



419-004  
Bluebell



419-005  
Aubergine



Grade 3

**Application**  
Multi-purpose for panels,  
wrapped walls & upholstery

**Content**  
100% Recycled Polyester

**Width**  
54 inches

**Abrasion**  
Passes 75,000 Double Rubs

**Finish**  
None

**Reduced Environmental Impact**  
Recycled Content  
GREENGUARD Gold Certified





## TECHNICAL INFORMATION

Content: **100% Recycled Polyester**  
 (52% Pre-/48% Repreve Post-Consumer) Backing: None Approx. Repeat: 14.3" H, 9.5" V Random Match  
 Width: 54" Finish: None Directional: Yes  
 Weight: 9.6 oz./linear yd. Cleaning Code: WS Railroaded: No

PERFORMANCE (*Certification Marks Owned by ACT)	Test Method	Results
Surface Abrasion: Heavy Duty <b>A</b> *	ASTM D-4157 (Cotton Duck)	Passes 75,000 Double Rubs
Breaking Strength: <b>X</b> *	ASTM D-5034	Warp 250 min lbs / Fill 125 min lbs
Seam Slippage: <b>X</b> *	ASTM D-4034	Warp 60 lbs min / Fill 60 lbs min
Pilling Resistance: <b>X</b> *	ASTM D-3511	Class 4 min
Colorfastness to Crocking: <b>2</b> *	AATCC-8	Dry: Class 4 min / Wet: Class 3 min
Colorfastness to Light: <b>3</b> *	AATCC 16 Option 3	Class 4 min at 60 hours

## FLAMMABILITY **4**\*

California Technical Bulletin 117-2013 Passes  
 NFPA 260 (Equivalent to UFAC) Class 1 Passes  
 ASTM E84 (Unadhered) Class 1 or A Passes  
 May comply with California Technical Bulletin 133 when combined with appropriate components.

## REDUCED ENVIRONMENTAL IMPACT

### Recycled Content

**GREENGUARD Gold Certified products are tested for low chemical emissions to standard UL 2818. For more information, visit [UL.com/gg](http://UL.com/gg).**

**facts<sup>SM</sup> Silver** The Facts icon indicates that a textile has been evaluated based on the requirements of the multi-attribute sustainability standard NSF/ANSI 336 through an independent third-party certification body authorized by the Association for Contract Textiles.

**Eco-System<sup>®</sup>**  
 Sustainable. Attainable at Mayer Fabrics.

**REPREVE** Repreve<sup>®</sup> polyester is made from post-consumer plastic bottles and pre-consumer fiber waste, making it one of the most earth-friendly fabric ingredients you'll find anywhere. The proprietary Repreve process took years to develop and is third party certified for recycled content. The production of Repreve polyester conserves energy and natural resources by offsetting the need to produce virgin polyester fiber, creating a reprieve for the planet. Repreve is a trademark of Unifi, Inc.

## CLEANING INFORMATION

WS: Water/Solvent Cleaner – Spot clean with a mild solvent, an upholstery shampoo, or the foam from a mild detergent. When using a solvent or dry cleaning product, follow instructions carefully and clean only in a well-ventilated room. Avoid any product that contains carbon tetrachloride or other toxic materials. With either method, pretest a small area before proceeding. Always rinse promptly with clean water.

## ADDITIONAL INFORMATION

**Custom Capabilities:** All patterns can be custom colored. Minimum yardage applies.

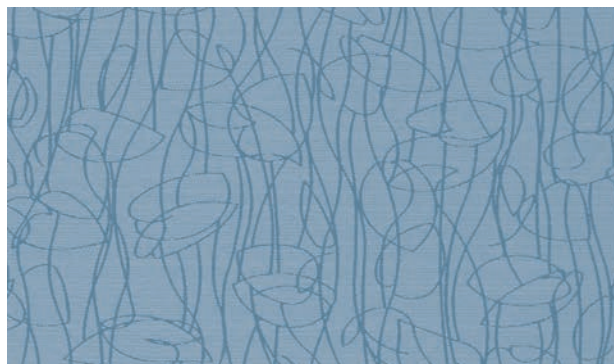
**Memo Samples:** Please keep this card intact. Individual memo samples can be ordered on our website or by contacting customer service.

**Fabric Color Matching:** Mayer Fabrics always attempts to ship a satisfactory commercial match. Because of industry standard dye lot variation, colors may not match exactly.

**Digital Swatch Card Color Matching:** Due to color variations on different monitors and color printers, actual swatch colors may vary slightly. Please request a memo sample from Mayer Fabrics to ensure proper color representation.

**Specifications:** Specifications are correct at the time of printing. Current specifications are available on our website.

**For information or assistance with products or services, call us at 800.428.4415 or refer to our website, [www.mayerfabrics.com](http://www.mayerfabrics.com).**



MEANDER - 14.3" H, 9.5" V Random Match



**MAYERFABRICS**





381-007 Opal



381-003 Emerald



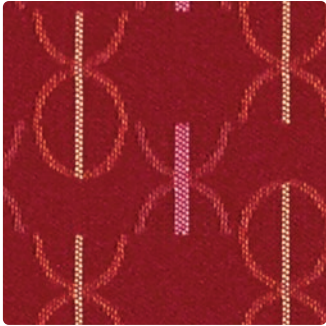
381-002 Butterscotch



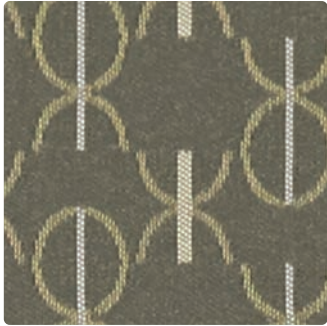
381-000 Bark



381-014 Cerulean



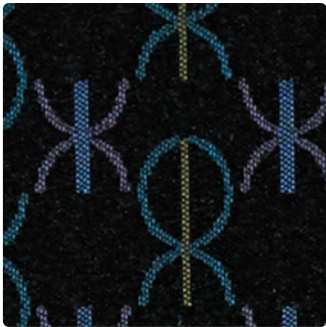
381-001 Rouge



381-016 Pewter



381-004 Indigo



381-026 Raven



381-006 Ebony

Grade 4

Application  
Seating

Content  
100% Eco Intelligent Polyester

Width  
54 inches

Abrasion  
Passes 100,000 Double Rubs

Finish  
None

Reduced Environmental Impact  
Recyclable Antimony Free  
Chlorine Free Free of PBT's  
GREENGUARD Gold Certified



### TECHNICAL INFORMATION

Content: <b>100% Eco Intelligent Polyester - ANTIMONY FREE</b>	Backing: None	Approx. Repeat: 2.125"H, 1.1875" V
Width: 54"	Finish: None	Directional: Yes
Weight: 10.22 oz./linear yard	Cleaning Code: WS	Railroaded: Yes

PERFORMANCE (*Certification Marks owned by ACT)	Test Method	Results
Surface Abrasion: Heavy Duty <b>A</b> *	ASTM-D-4157	Passes 100,000 Double Rubs
Breaking Strength: <b>X</b> *	ASTM-D-5034 Grab Test	Warp 330 min lbs / Fill 112 min lbs
Seam Slippage: <b>X</b> *	ASTM-D-434	Warp 72 min lbs / Fill 50 min lbs
Pilling Resistance: <b>X</b> *	ASTM-D-3511	Class 4
Colorfastness to Crocking: <b>4</b> *	AATCC-8	Dry: Class 4 min / Wet: Class 4 min
Colorfastness to Light: <b>4</b> *	AATCC 16	Class 5 at 60 hours

### FLAMMABILITY **4**\*

California Technical Bulletin 117-2013 Passes  
 NFPA 260 (Equivalent to UFAC) Class 1 Passes  
 May comply with California Technical Bulletin 133 when combined with appropriate components.

### REDUCED ENVIRONMENTAL IMPACT

EcoIntelligent® Polyester is: **Recyclable Antimony Free Chlorine Free Free of PBT's Produced with Renewable Energy**  
 The first polyester produced with all environmentally safe ingredients.  
 The first true "technical nutrient" textile, which is a material that remains in a closed-loop system of manufacture, reuse, and recovery, maintaining its value through many product life cycles.

GREENGUARD Gold Certified products are tested for low chemical emissions to standard UL 2818. For more information, visit [UL.com/gg](http://UL.com/gg).

 **facts** Gold\* The Facts icon indicates that a textile has been evaluated based on the requirements of the multi-attribute sustainability standard NSF/ANSI 336 through an independent third-party certification body authorized by the Association for Contract Textiles.

 This pattern has been Cradle to Cradle certified gold by MBDC for its material content, recyclability, and manufacturing characteristics. [c2ccertified.com](http://c2ccertified.com)

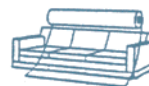
### CLEANING INFORMATION

WS: Water/Solvent Cleaner – Spot clean, with a mild solvent, an upholstery shampoo, or the foam from a mild detergent. When using a solvent or dry cleaning product, follow instructions carefully and clean only in a well-ventilated room. Avoid any product that contains carbon tetrachloride or other toxic materials. With either method, pretest a small area before proceeding.

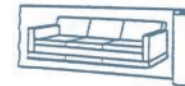
### ADDITIONAL INFORMATION

**Custom Capabilities:** All patterns can be custom colored. Minimum yardage applies.  
**Memo Samples:** Please keep this card intact. Individual memo samples can be ordered on our website or by contacting customer service.  
**Fabric Color Matching:** Mayer Fabrics always attempts to ship a satisfactory commercial match. Because of industry standard dye lot variation, colors may not match exactly.  
**Digital Swatch Card Color Matching:** Due to color variations on different monitors and color printers, actual swatch colors may vary slightly. Please request a memo sample from Mayer Fabrics to ensure proper color representation.  
**Specifications:** Specifications are correct at the time of printing. Current specifications are available on our website.  
**For information or assistance with products or services, call us at 800.428.4415 or refer to our website, [www.mayerfabrics.com](http://www.mayerfabrics.com).**

Railroaded: This feature allows reduction of seams and enables smoother furniture tailoring.



Fabric "up the roll" or "regular" position



Fabric "railroaded" or "top selvage" position

We recommend all railroaded patterns should be upholstered as shown on card.



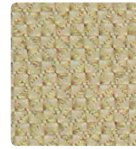
# SEATING COORDINATES

---





**ALIGN Grade 3**  
398-007 Sea Salt



**QUATTRO Grade 1**  
300-007 Chalk



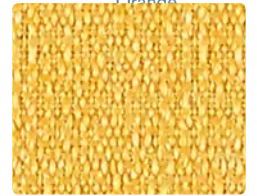
**QUATTRO Grade 1**  
300-036 Pumice



**QUATTRO Grade 1**  
0300-019 Golden Orange



**CONTINUUM Grade 1**  
422-017 Almond



**CONTINUUM Grade 1**  
422-002 Saffron



**FEDORA Grade 1**  
621-046 Light Grey



**FEDORA Grade 1**  
621-036 Dapper



**FEDORA Grade 1**  
621-017 Fawn



**VALET Grade 3**  
399-009 Amber



**VALET Grade 3**  
399-002 Chamois



**VALET Grade 3**  
399-030 Cypress



**PATIO Grade 3**  
420-002 Sunshine



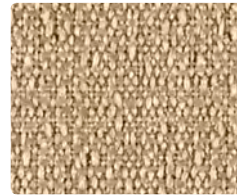
**REVERB Grade 3**  
421-007 Taupe



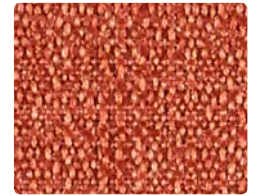
**REVERB Grade 3**  
421-009 Tangelo



**PATIO Grade 3**  
420-009 Coral Reef



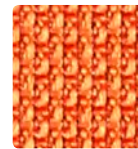
**CONTINUUM Grade 1**  
422-007 Cafe Au Lait



**CONTINUUM Grade 1**  
422-019 Brick



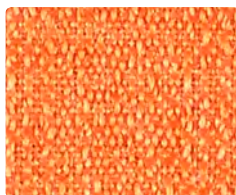
**OPTIC Grade 1**  
424-007 Mushroom



**OPTIC Grade 1**  
424-009 Sunrise



**OPTIC Grade 1**  
424-001 Red



**CONTINUUM Grade 1**  
422-009 Mandarin



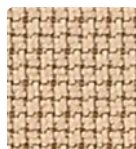
**CONTINUUM Grade 1**  
422-001 Lipstick



**CROSS CHECK Grade 1**  
299-036 Dove



**CROSS CHECK Grade 1**  
299-027 Stone



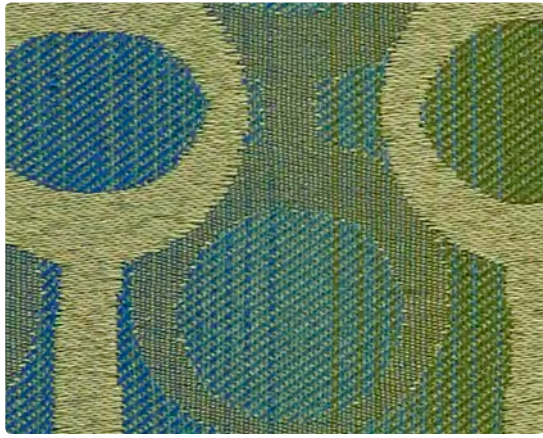
**CROSS CHECK Grade 1**  
299-037 Biscuit



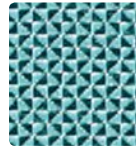
**ALIGN Grade 3**  
398-009 Fruit Punch

Additional colors are available. Please refer to the Mayer Fabrics website.

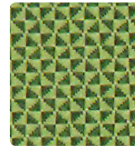




**ALIGN Grade 3**  
398-013 Oasis



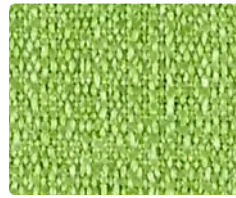
**QUATTRO Grade 1**  
300-023 Mallard



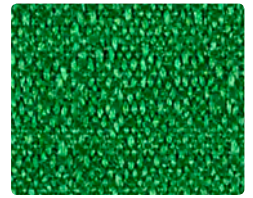
**QUATTRO Grade 1**  
300-003 Spring Green



**QUATTRO Grade 1**  
300-024 Laguna



**CONTINUUM Grade 1**  
422-003 Spring



**CONTINUUM Grade 1**  
422-013 Emerald



**FEDORA Grade 1**  
621-033 Opal



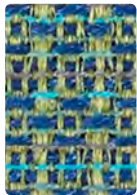
**FEDORA Grade 1**  
621-013 Citron



**FEDORA Grade 1**  
621-014 Indigo



**VALET Grade 3**  
399-013 Jadeite



**VALET Grade 3**  
399-014 Oasis



**VALET Grade 3**  
399-004 Oceanic



**REVERB Grade 3**  
421-003 Pistachio



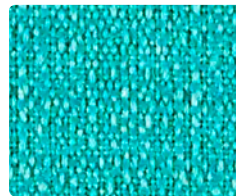
**PATIO Grade 3**  
420-003 Jungle



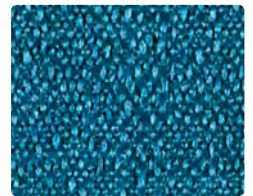
**REVERB Grade 3**  
421-004 Marine



**PATIO Grade 3**  
420-004 Oceanic



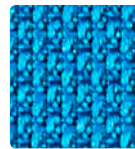
**CONTINUUM Grade 1**  
422-034 Turquoise



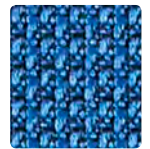
**CONTINUUM Grade 1**  
422-024 Caribbean



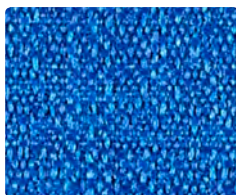
**OPTIC Grade 1**  
424-013 Green Apple



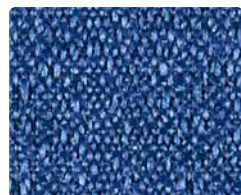
**OPTIC Grade 1**  
424-024 Ocean



**OPTIC Grade 1**  
424-004 Yale



**CONTINUUM Grade 1**  
422-014 Electric



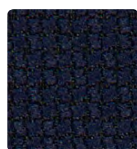
**CONTINUUM Grade 1**  
422-004 Indigo



**CROSS CHECK Grade 1**  
299-003 Lime



**CROSS CHECK Grade 1**  
299-024 Blue Ribbon



**CROSS CHECK Grade 1**  
299-014 Imperial

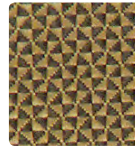


**ALIGN Grade 3**  
398-014 Moody Blue

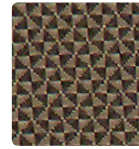




**ALIGN Grade 3**  
398-000 Honeycomb



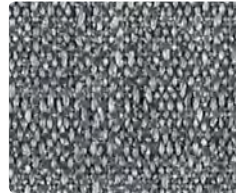
**QUATTRO Grade 1**  
300-000 Honeycomb



**QUATTRO Grade 1**  
300-016 Khaki



**QUATTRO Grade 1**  
300-006 Granite



**CONTINUUM Grade 1**  
422-016 Charcoal



**CONTINUUM Grade 1**  
422-027 Stone



**FEDORA Grade 1**  
621-056 Dew



**FEDORA Grade 1**  
621-000 Mink



**FEDORA Grade 1**  
621-006 Bitumen



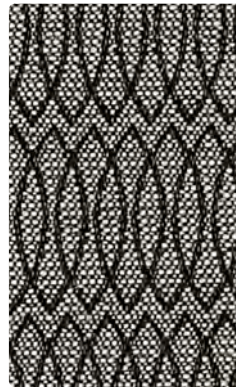
**VALET Grade 3**  
399-010 Oyster



**VALET Grade 3**  
399-020 Truffle



**VALET Grade 3**  
399-006 Sultry



**REVERB Grade 3**  
421-006 Charcoal



**PATIO Grade 3**  
420-000 Basket



**REVERB Grade 3**  
421-000 Granite



**PATIO Grade 3**  
420-006 Slate



**CONTINUUM Grade 1**  
422-026 Dove



**CONTINUUM Grade 1**  
422-036 Iron



**OPTIC Grade 1**  
424-026 Elephant



**OPTIC Grade 1**  
424-000 Brown Bear



**OPTIC Grade 1**  
424-006 Ash



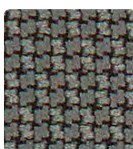
**CONTINUUM Grade 1**  
422-000 Espresso



**CONTINUUM Grade 1**  
422-006 Onyx



**CROSS CHECK Grade 1**  
299-000 Otter



**CROSS CHECK Grade 1**  
299-026 Platinum



**CROSS CHECK Grade 1**  
299-006 Slate Black

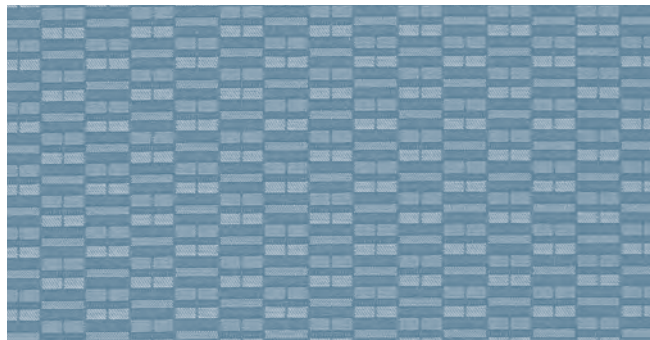


**ALIGN Grade 3**  
398-006 Java



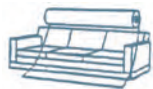


ALIGN **Grade 3** – Repeat: 3.625" H, 4.375" V – Shown Railroaded

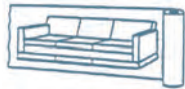


PATIO **Grade 3** – Repeat: 1.875" H, 1.25" V

Railroaded: This feature allows reduction of seams and enables smoother furniture tailoring.



Fabric "up the roll"  
or "regular" position



Fabric "railroaded" or  
"top selvage" position

We recommend all railroaded patterns should be upholstered as shown on card.

## CARE AND CLEANING INFORMATION

### Cross Check, Quattro

S: Solvent – Spot clean, using a mild water-free solvent or dry cleaning product. Clean only in a well-ventilated room avoid any product that contains carbon tetrachloride or other toxic materials. Pretest a small area before proceeding. Always rinse promptly with clean water.

### Fedora

W: Water-Based Cleaner – Spot clean, using the foam only from a water-based cleaning agent, such as a mild detergent or non-solvent upholstery shampoo product. Apply foam with a soft brush in a circular motion. Always rinse promptly with clean water. Vacuum when dry. Pretest small area before proceeding.

### Align, Continuum, Optic, Patio, Reverb, Valet

WS: Water/Solvent Cleaner – Spot clean with a mild solvent, an upholstery shampoo, or the foam from a mild detergent. When using a solvent or dry cleaning product follow instructions carefully and clean only in a well-ventilated room. Avoid any product that contains carbon tetrachloride or other toxic materials. With either method, pretest a small area before proceeding. Always rinse promptly with clean water.

### Align, Patio, Valet

BC: Bleach Cleanable – 1 part bleach, 9 parts water = 10% bleach, 90% water solution. Do not clean/disinfect fabric for longer than 10 minutes using the 10% bleach solution. Always rinse promptly with clean water after applying the bleach solution. Failure to do so will void any and all warranties.

For additional care and cleaning information by pattern, please refer to the Mayer Fabrics website.

# TECHNICAL INFORMATION

## Seating Coordinates

Pattern 54"	Content and Backing	Certifications	Weight/ Linear Yd.	Pattern Repeat	Finish	Abrasion Wyzenbeek	Light- Fastness	Flammability	Cleaning Code
<b>ALIGN</b> <i>Directional</i> <i>Railroaded</i>	100% Polyester Backing: Acrylic	<b>GREENGUARD</b> <b>Gold</b>	15.392 oz.	3.625" H, 4.375" V	Stain Repellent	60,000 Double Rubs	40 hours	Cal. 117-2013 NFPA 260/UFAC Class 1	WS, Bleach Cleanable
<b>CONTINUUM</b> <i>Directional</i>	<b>100% Post-Consumer Recycled Polyester</b> Backing: Latex	<b>GREENGUARD</b> <b>Gold</b>	15 oz.	0.50" H, 0.59" V	Stain Repellent	130,000^ Double Rubs	40 hours	Cal. 117-2013 NFPA 260/UFAC Class 1 ASTM E84 (Unadhered) Class 1 or A	WS
<b>CROSS CHECK</b>	100% Polyester Backing: Acrylic	<b>GREENGUARD</b> <b>Gold</b>	10.71 oz.	Non- Matching	Stain Repellent	258,000^ Double Rubs	40 hours	Cal. 117-2013 NFPA 260/UFAC Class 1 ASTM E84 (Adhered) Class 2 or B	S
<b>FEDORA</b> <i>Directional</i>	100% Polyester Backing: Polyester Knit	<b>GREENGUARD</b> <b>Gold</b>	15 oz.	None	Stain Repellent	100,000 Double Rubs	40 hours	Cal. 117-2013 NFPA 260/UFAC Class 1 ASTM E84 (Unadhered) Class 1 or A	W
<b>OPTIC</b> <i>Directional</i>	<b>83% Post-Consumer Recycled Polyester,</b> 17% Polyester Backing: Latex	<b>GREENGUARD</b> <b>Gold</b>	16.5 oz.	0.33" H, 0.20" V	Stain Repellent	185,000^ Double Rubs	40 hours	Cal. 117-2013 NFPA 260/UFAC Class 1 ASTM E84 (Unadhered) Class 1 or A	WS
<b>PATIO</b> <i>Directional</i>	100% Polyester Backing: Acrylic	<b>GREENGUARD</b> <b>Gold</b>	15.504 oz.	1.875" H, 1.25" V	Stain Repellent	51,000 Double Rubs	40 hours	Cal. 117-2013 NFPA 260/UFAC Class 1	WS, Bleach Cleanable
<b>QUATTRO</b> <i>Directional</i>	100% Polyester Backing: Acrylic	<b>GREENGUARD</b> <b>Gold</b>	13.06 oz.	Non- Matching	Stain Repellent	237,000^ Double Rubs	40 hours	Cal. 117-2013 NFPA 260/UFAC Class 1 ASTM E84 (Unadhered) Class 1 or A IMO A.652(16) 8.2	S
<b>REVERB</b> <i>Directional</i>	<b>100% Recycled Polyester</b> (52% Repreve Post-/ 48% Pre-Consumer) Backing: None	<b>GREENGUARD</b> <b>Gold</b> <b>Facts Silver</b>	9.3 oz.	0.375" H, 1.875" V	None	100,000 Double Rubs	60 hours	Cal. 117-2013 NFPA 260/UFAC Class 1 ASTM E84 (Unadhered) Class 1 or A	WS
<b>VALET</b> <i>Directional</i>	100% Polyester Backing: Acrylic	<b>GREENGUARD</b> <b>Gold</b>	14.912 oz.	0.063" H, 1.818" V	Stain Repellent	51,000 Double Rubs	40 hours	Cal. 117-2013 NFPA 260/UFAC Class 1	WS, Bleach Cleanable

### REDUCED ENVIRONMENTAL IMPACT

These products are GREENGUARD Gold Certified for low chemical and particle emissions to UL standard UL 2818 and may contribute to LEED certification. For complete information visit [mayerfabrics.com](http://mayerfabrics.com) and [UL.com/gg](http://UL.com/gg).

#### Continuum, Reverb



The Eco-System icon indicates 100% recycled content.

#### Reverb



The Facts icon indicates that a textile has been evaluated based on the requirements of the multi-attribute sustainability standard NSF/ANSI 336 through an independent third-party certification body authorized by the Association for Contract Textiles.

### ADDITIONAL INFORMATION

Cal TB 133: All patterns may comply with California Technical Bulletin 133 when combined with appropriate components.

^Abrasion: Multiple factors affect fabric durability and appearance retention, including end-user application and proper maintenance. Wyzenbeek results above 100,000 double rubs have not been shown to be a reliable indicator of increased fabric lifespan.

Custom Capabilities: All patterns can be custom colored. Minimum yardage applies.

Digital Swatch Card Color Matching: Due to color variations on different monitors and color printers, actual swatch colors may vary slightly. Please request a memo sample from Mayer Fabrics to ensure proper color representation.

Specifications: Specifications are correct at the time of printing. Additional specifications are available on our website.

**For information or assistance with products or services, call us at 800.428.4415 or refer to the Mayer Fabrics website.**

#### Continuum, Cross Check, Optic, Quattro, Reverb

 This 100% polyester fabric is included in the Underwriter's Laboratory Fabric Recognition Program. Additional testing of this U.L. recognized component is not required on approved panels from participating manufacturers.



These fabrics meet or exceed these ACT performance guidelines. \*Certification Marks owned by ACT®

**Align, Continuum, Cross Check, Fedora, Optic, Patio, Quattro, Valet**



Water and Stain Repellent Finish



☎ 317.267.2626 or 800.428.4415 ☎ 317.267.2629 or 877.7SAMPLE

[www.mayerfabrics.com](http://www.mayerfabrics.com)  
©2017 Mayer-Paetz, Inc.

SEATCCD  50617



# **SPECTRUM** COLLECTION

---





**THEORY**  
423-037 Alabaster



**CONTINUUM**  
422-026 Dove



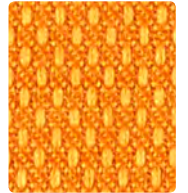
**THEORY**  
423-016 Charcoal



**THEORY**  
423-017 Stone



**CONTINUUM**  
422-002 Saffron



**VARIANT**  
425-019 Orange Peel



**PRISM**  
426-027 Zinc



**PRISM**  
426-026 Dove



**CONTINUUM**  
422-036 Iron



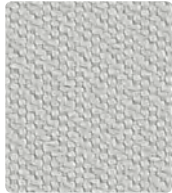
**CONTINUUM**  
422-027 Stone



**PRISM**  
426-002 Topaz



**CONTINUUM**  
422-009 Mandarin



**THEORY**  
423-026 Dove



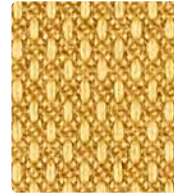
**VARIANT**  
425-016 Flint



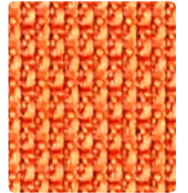
**PRISM**  
426-016 Charcoal



**PRISM**  
426-017 Stone



**VARIANT**  
425-002 Mustard



**OPTIC**  
424-009 Sunrise



**VARIANT**  
425-017 Creme



**OPTIC**  
424-026 Elephant



**OPTIC**  
424-006 Ash



**THEORY**  
423-010 Mocha



**OPTIC**  
424-019 Tangerine



**THEORY**  
423-009 Mango



**CONTINUUM**  
422-017 Almond



**VARIANT**  
425-026 Aluminum



**VARIANT**  
425-006 Carbon



**PRISM**  
426-010 Mocha



**CONTINUUM**  
422-007 Cafe Au Lait



**PRISM**  
426-021 Tomato



**VARIANT**  
425-007 Biscuit



**CONTINUUM**  
422-016 Charcoal



**CONTINUUM**  
422-006 Onyx



**VARIANT**  
425-000 Chocolate



**THEORY**  
423-007 Cafe Au Lait



**CONTINUUM**  
422-019 Brick



**OPTIC**  
424-017 Fieldstone



**OPTIC**  
424-016 Coal



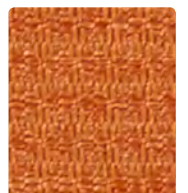
**THEORY**  
423-006 Onyx



**CONTINUUM**  
422-000 Espresso



**VARIANT**  
425-010 Cocoa



**PRISM**  
426-019 Clay



**OPTIC**  
424-007 Mushroom



**PRISM**  
426-006 Onyx



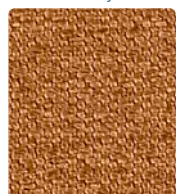
**OPTIC**  
424-000 Brown Bear



**THEORY**  
423-000 Espresso



**PRISM**  
426-007 Cafe Au Lait



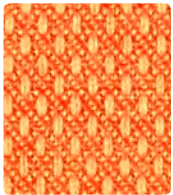
**THEORY**  
423-019 Tobacco

Grade 1

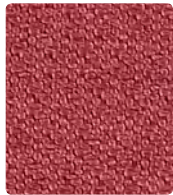


Additional colors are available. Please refer to the Mayer Fabrics website.

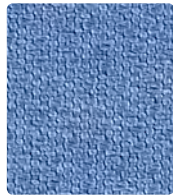




VARIANT  
425-009 Persimmon



THEORY  
423-011 Rouge



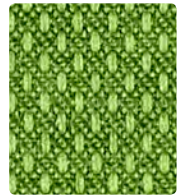
THEORY  
423-024 Slate



PRISM  
426-034 Cerulean



CONTINUUM  
422-023 Citrine



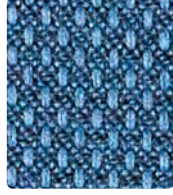
VARIANT  
425-013 Jungle



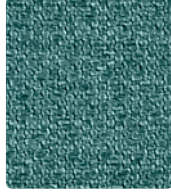
PRISM  
426-009 Clementine



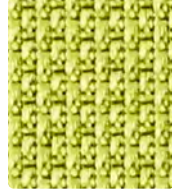
VARIANT  
425-005 Aubergine



VARIANT  
425-004 Ink



THEORY  
423-044 Teal



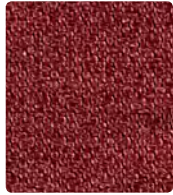
OPTIC  
424-013 Green Apple



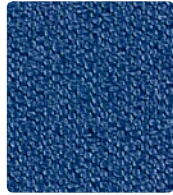
PRISM  
426-003 Kale



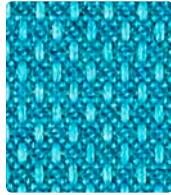
PRISM  
426-011 Claret



THEORY  
423-008 Port



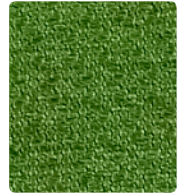
THEORY  
423-014 Indigo



VARIANT  
425-014 Prussian



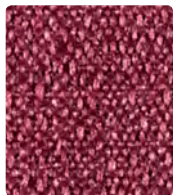
CONTINUUM  
422-003 Spring



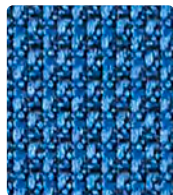
THEORY  
423-003 Grass



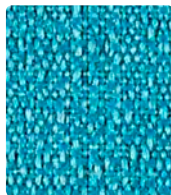
VARIANT  
425-001 Barn Red



CONTINUUM  
422-008 Beet



OPTIC  
424-004 Yale



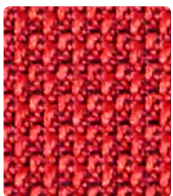
CONTINUUM  
422-044 Ocean



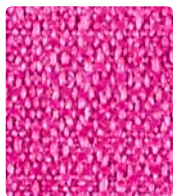
OPTIC  
424-023 Springtime



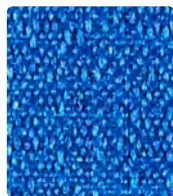
PRISM  
426-013 Olive



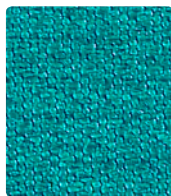
OPTIC  
424-001 Red



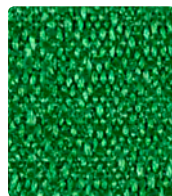
CONTINUUM  
422-005 Magenta



CONTINUUM  
422-014 Electric



THEORY  
423-034 Peacock



CONTINUUM  
422-013 Emerald



THEORY  
423-023 Grove



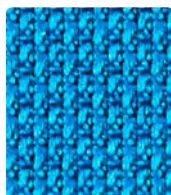
CONTINUUM  
422-001 Lipstick



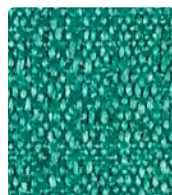
THEORY  
423-015 Raspberry



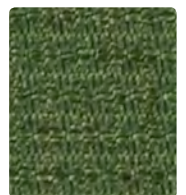
CONTINUUM  
422-004 Indigo



OPTIC  
424-024 Ocean



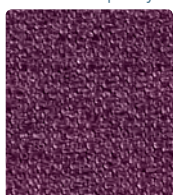
CONTINUUM  
422-033 Pine



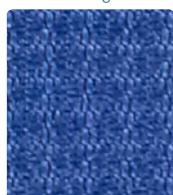
PRISM  
426-023 Asparagus



THEORY  
423-001 Lipstick



THEORY  
423-005 Aubergine



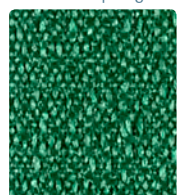
PRISM  
426-004 Indigo



PRISM  
426-024 Caribbean



OPTIC  
424-033 Myrtle



CONTINUUM  
422-043 Bottle



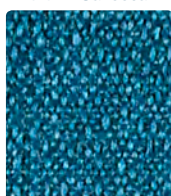
PRISM  
426-001 Lipstick



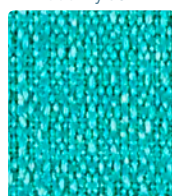
PRISM  
426-005 Plum



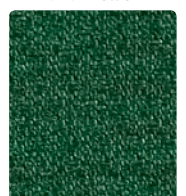
THEORY  
423-004 Navy



CONTINUUM  
422-024 Caribbean



CONTINUUM  
422-034 Turquoise



THEORY  
423-013 Evergreen

Additional colors are available. Please refer to the Mayer Fabrics website.

# TECHNICAL INFORMATION

## Spectrum Collection

Pattern 54"	Content and Backing	Certifications	Weight/ Linear Yd.	Pattern Repeat	Finish	Abrasion Wyzenbeek	Light- Fastness	Flammability	Cleaning Code
<b>CONTINUUM</b> <i>Directional</i>	<b>100% Post-Consumer Recycled Polyester</b> Backing: Latex	<b>GREENGUARD Gold</b>	15 oz.	0.50" H, 0.59" V	Stain Repellent	130,000^ Double Rubs	40 hours	Cal. 117-2013 NFPA 260/UFAC Class 1 ASTM E84 (Unadhered) Class 1 or A	WS
<b>OPTIC</b> <i>Directional</i>	<b>83% Post-Consumer Recycled Polyester</b> 17% Polyester Backing: Latex	<b>GREENGUARD Gold</b>	16.5 oz.	0.33" H, 0.20" V	Stain Repellent	185,000^ Double Rubs	40 hours	Cal. 117-2013 NFPA 260/UFAC Class 1 ASTM E84 (Unadhered) Class 1 or A	WS
<b>PRISM</b> <i>Directional</i>	<b>75% Post-Consumer Recycled Polyester</b> 25% Polyester Backing: Latex	<b>GREENGUARD Gold</b>	14.5 oz.	0.17" H, 0.20" V	Stain Repellent	105,000^ Double Rubs	40 hours	Cal. 117-2013 NFPA 260/UFAC Class 1 ASTM E84 (Unadhered) Class 1 or A	WS
<b>THEORY</b> <i>Directional</i>	<b>75% Post-Consumer Recycled Polyester</b> 25% Polyester Backing: Latex	<b>GREENGUARD Gold</b>	14.5 oz.	0.17" H, 0.39" V	Stain Repellent	150,000^ Double Rubs	40 hours	Cal. 117-2013 NFPA 260/UFAC Class 1 ASTM E84 (Unadhered) Class 1 or A	WS
<b>VARIANT</b> <i>Directional</i>	<b>75% Post-Consumer Recycled Polyester</b> 25% Polyester Backing: Latex	<b>GREENGUARD Gold</b>	14.5 oz.	0.17" H, 0.20" V	Stain Repellent	140,000^ Double Rubs	40 hours	Cal. 117-2013 NFPA 260/UFAC Class 1 ASTM E84 (Unadhered) Class 1 or A	WS

### REDUCED ENVIRONMENTAL IMPACT

These products are **GREENGUARD Gold Certified** for low chemical and particle emissions to **UL standard UL 2818** and may contribute to **LEED certification**. For complete information visit [mayerfabrics.com](http://mayerfabrics.com) and [UL.com/gg](http://UL.com/gg).

#### Continuum



The Eco-System icon indicates 100% recycled content.

### CARE AND CLEANING INFORMATION

WS: Water/Solvent Cleaner

### ADDITIONAL INFORMATION

**CAL TB 133:** All patterns may comply with California Technical Bulletin 133 when combined with appropriate components.

**^Abrasion:** Multiple factors affect fabric durability and appearance retention, including end-user application and proper maintenance. Wyzenbeek results above 100,000 double rubs have not been shown to be a reliable indicator of increased fabric lifespan.

**Custom Capabilities:** All patterns can be custom colored. Minimum yardage applies.

**Digital Swatch Card Color Matching:** Due to color variations on different monitors and color printers, actual swatch colors may vary slightly. Please request a memo sample from Mayer Fabrics to ensure proper color representation.

**Specifications:** Specifications are correct at the time of printing. Additional specifications are available on our website.



These fabrics meet or exceed these ACT performance guidelines.  
\*Certification Marks owned by ACT\*



**Water and Stain  
Repellent Finish**



This 100% polyester fabric is included in the Underwriter's Laboratory Fabric Recognition Program. Additional testing of this U.L. recognized component is not required on approved panels from participating manufacturers.

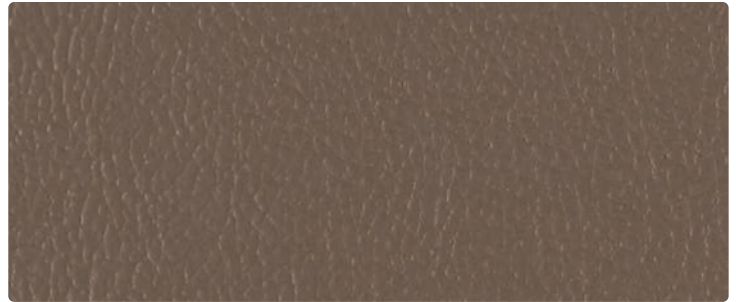


**MAYERFABRICS**





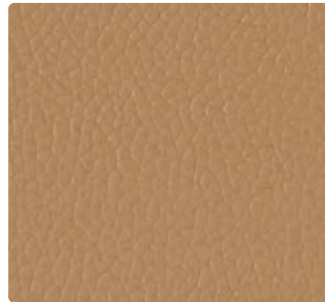
Lipstick  
RC-001



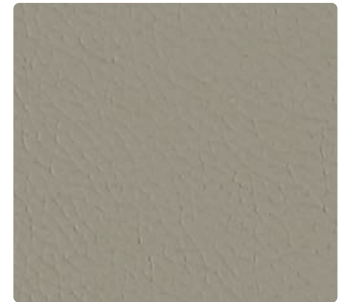
Greige  
RC-010



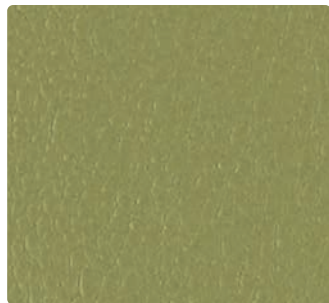
Brandy  
RC-008



Ecru  
RC-007



Nickel  
RC-036



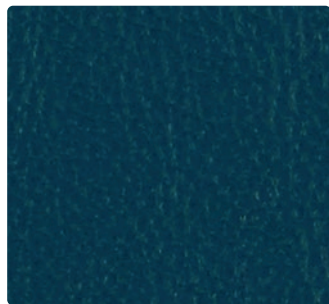
Basil  
RC-003



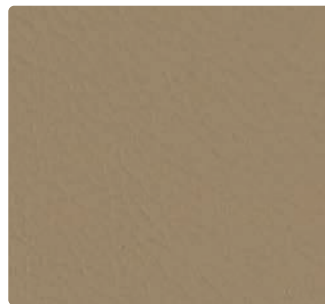
Sepia  
RC-009



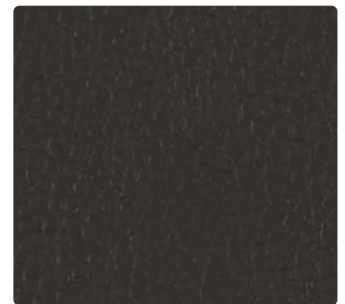
Slate  
RC-026



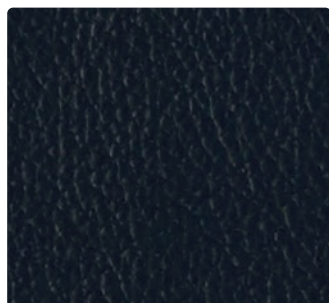
Sapphire  
RC-004



Driftwood  
RC-020



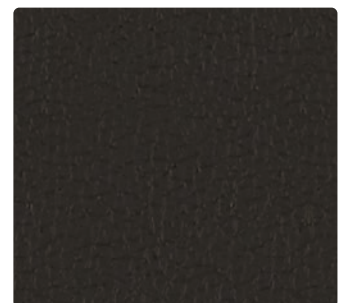
Thunder  
RC-016



Navy  
RC-014



Chocolate  
RC-000



Black  
RC-006



Grade 1

**Application**  
Upholstery Seating

**Content**  
85% Vinyl face  
15% Polyester backing

**Width**  
54 inches

**Abrasion** (Wyzenbeek/Cotton Duck)  
Exceeds 250,000 Double Rubs

**Finish**  
None

**Reduced Environmental Impact**  
GREENGUARD Certified



## TECHNICAL INFORMATION

Content: 85% Vinyl face  
15% Polyester backing

Width: 54"

Approx. Repeat: None

Weight: 24.5 oz./linear yard

Finish: None

Directional: No

Railroaded: No

## PERFORMANCE

Surface Abrasion: Heavy Duty ASTM D 4157  
(Wyzenbeek/Cotton Duck)

Colorfastness to Crocking AATCC 8

Colorfastness to Light AATCC 16

## Results

Exceeds 250,000 Double Rubs Multiple factors affect fabric durability and appearance retention, including end-user application and proper maintenance. Wyzenbeek results above 100,000 double rubs have not been shown to be a reliable indicator of increased fabric lifespan.

Dry: Class 4 min / Wet: Class 4 min

Class 5 at 200 hours

## FLAMMABILITY

California Technical Bulletin 117-2013

NFPA 260/UFAC Class 1

FMVSS 302

May comply with California Technical Bulletin 133 when combined with appropriate components.

## REDUCED ENVIRONMENTAL IMPACT

This product is GREENGUARD Certified for low chemical and particle emissions to UL standard UL 2818 and may contribute to LEED certification. For complete information visit [mayerfabrics.com](http://mayerfabrics.com) and [UL.com/gg](http://UL.com/gg).

## CLEANING INFORMATION

W: Water-Based Cleaner

**Disclaimer: Do not use bleach or solvent-based cleaners.**

## ADDITIONAL INFORMATION

**Custom Capabilities:** All patterns can be custom colored. Minimum yardage applies.

**Digital Swatch Card Color Matching:** Due to color variations on different monitors and color printers, actual swatch colors may vary slightly. Please request a memo sample from Mayer Fabrics to ensure proper color representation.

**Specifications:** Specifications are correct at the time of printing. Current specifications are available on our website.



This fabric meets or exceeds these ACT performance guidelines.  
\*Certification Marks owned by ACT\*



**MAYER**FABRICS





## **CARESSA FR**

---

Faux Leather

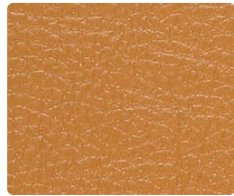


**MAYER**FABRICS

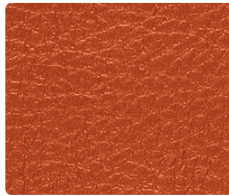
# Faux Leather



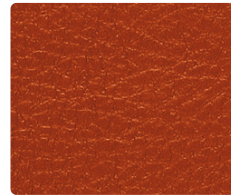
VYN1350 **Paprika**



VYN1071 **Ochre**



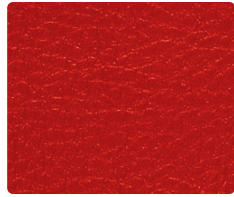
VYN1068 **Bittersweet**



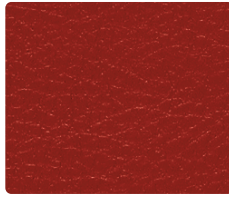
VYN1064 **Red Clay**



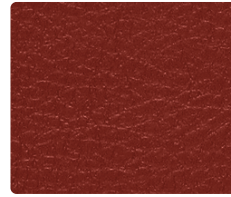
VYN1034 **Brick**



VYN1065 **Lipstick**



VYN1070 **Red Pepper**



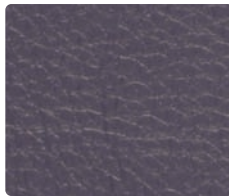
VYN1061 **Ruby**



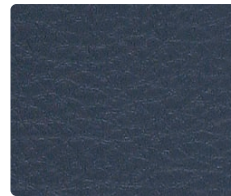
VYN1037 **Burgundy**



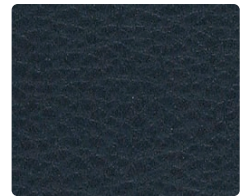
VYN1063 **Aubergine**



VYN1351 **Lavender**



VYN1041 **Iris**



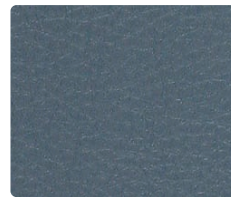
VYN1040 **Navy**



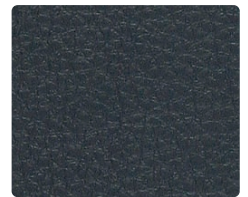
VYN1358 **Spa**



VYN1353 **Cerulean**



VYN1076 **Cadet**



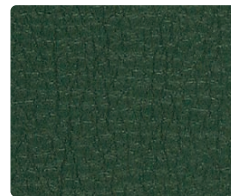
VYN1042 **Admiral**



VYN1352 **Aqua**



VYN1357 **Bluegrass**



VYN1030 **Orchard**



VYN1032 **Spruce**

Application  
Seating

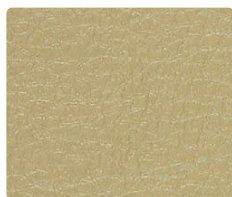
Content  
100% Vinyl

Width  
54 inches

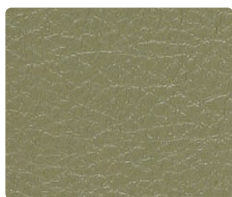
Abrasion  
Exceeds 650,000 Double Rubs

Finish  
Resilience<sup>SR</sup>





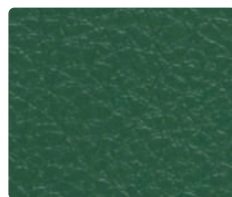
VYN1079 Willow



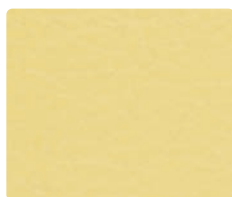
VYN1077 Laurel



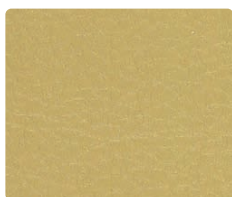
VYN1356 Wasabi



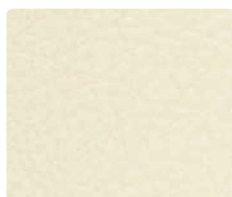
VYN1360 Basil



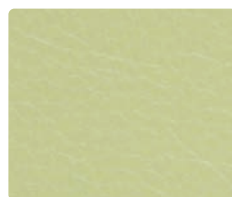
VYN1347 Banana



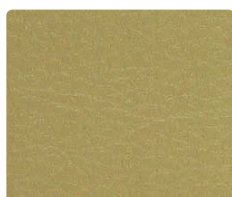
VYN1062 Butterscotch



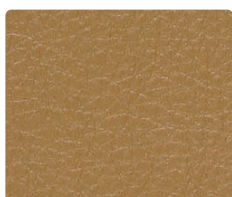
VYN1354 Bisque



VYN1349 Ecru



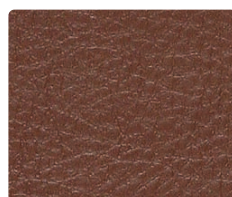
VYN1022 Buff



VYN1066 Mojave



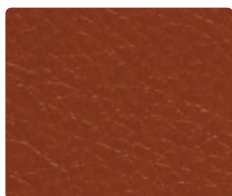
VYN1036 Saddle



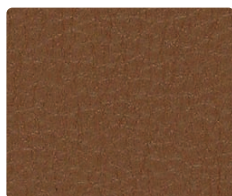
VYN1069 Jersey



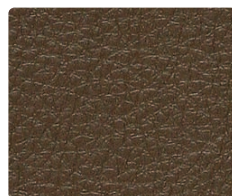
VYN1355 Caramel



VYN1359 Rawhide



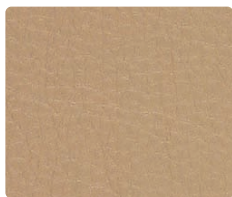
VYN1060 Coco



VYN1074 Java



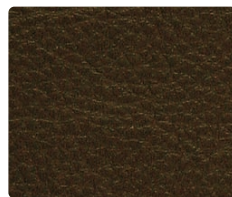
VYN1024 Doe



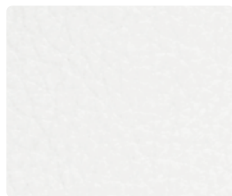
VYN1026 Papyrus



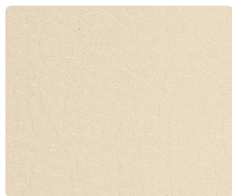
VYN1023 Taupe



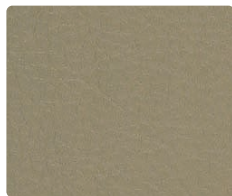
VYN1027 Chocolate



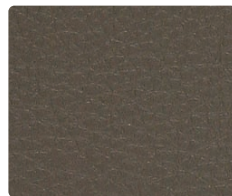
VYN1348 Ivory



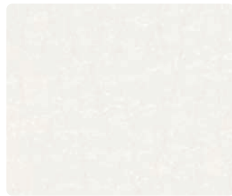
VYN1025 Kilimanjaro



VYN1043 Stone



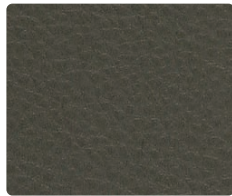
VYN1039 Granite



VYN1044 White



VYN1320 Zinc



VYN1046 Pewter



VYN1047 Black

**TECHNICAL INFORMATION**

Content: 100% Vinyl Width: 54" Weight: 29 oz./linear yard	Backing: 100% Brushed Polyester Knit Finish: Resilience <sup>SR</sup> Cleaning Code: WS	Visual Repeat: None Directional: No Shown Railroaded: No
-----------------------------------------------------------------	-----------------------------------------------------------------------------------------------	----------------------------------------------------------------

PERFORMANCE	Test Method	Results
Surface Abrasion: Heavy Duty <b>A</b> *	ASTM-D-3597/4157 (Cotton Duck)	Exceeds 650,000 Double Rubs
Breaking Strength: <b>✂</b> *	CFFA-17 / ASTM D751	Warp 142 lbs / Fill 97 lbs
Seam Slippage: <b>✂</b> *	CFFA-14 / Method ASTM D751	Warp 58 lbs / Fill 41 lbs
Colorfastness to Crocking: <b>☑</b> *	AATCC 8	Dry: Class 4 min / Wet: Class 4 min
Colorfastness to Light: <b>☀</b> *	UV Resistance G154-06	500 Hours - Suitable for Marine Use
Cold Crack:	CFFA-6 Fed. Stnd. No. 191A - Method 5874	-20° F

**FLAMMABILITY **🔥**\***

California Technical Bulletin 117, Section E NFPA 260 (Equivalent to UFAC) Class 1 ASTM E84 (Adhered) Class 1 or A BIFMA CS-191-53, Section 3 BIFMA Upholstery, Section 4 Should comply with California Technical Bulletin 133 when combined with appropriate components.	Passes Passes Passes Passes Passes	Boston Fire Dept. Code (BFD IX-1) FMVSS 302 IMO A.652(16)8.2 & 8.3 NY & NJ Port Authority	Passes Passes Passes Passes
------------------------------------------------------------------------------------------------------------------------------------------------------------------------------------------------------------------------------------------------------------------------------------------	------------------------------------------------	----------------------------------------------------------------------------------------------------	--------------------------------------

**SPECIFIC TREATMENTS**

Stain Resistant with Resilience<sup>SR</sup> Abrasion Resistant Anti-Bacterial Anti-Microbial Sulfide Stain Resistant Mildew Resistant Bleach Cleanable (1:10)

**Resilience<sup>SR</sup>**

**ENDURING PROTECTION** Resilience<sup>SR</sup> represents the latest technology in faux leather and vinyl protection, enhancing performance where it is needed the most.  
**Stain Resistance:** With proper care, materials treated with Resilience<sup>SR</sup> can be easily cleaned and will guard against stains maintaining the desired surface appearance for years to come.  
**Anti-Microbial & Anti-Bacterial Protection:** Products treated with Resilience<sup>SR</sup> are engineered to inhibit bacterial growth, as well as fungus, mold and mildew spores, resulting in a more hygienic environment.  
**Abrasion Resistance:** Resilience<sup>SR</sup> provides additional wear properties and surface durability to any vinyl or faux leather, thereby increasing the life of the material.  
**Resilience<sup>SR</sup>** is not visible, and does not affect the hand of the material. **Resilience<sup>SR</sup>** is engineered to last, even after repeated cleaning and wear. Specify **Resilience<sup>SR</sup>** for the most demanding healthcare and hospitality applications.  
 Resilience<sup>SR</sup> complies with ASTM G-21/CFFA 120 and AATCC 147/CFFA 300 inhibiting the growth of the following organisms:  
 Aspergillus Niger Penicillium Pinaphilum Chaetomium Globosum Trichoderma Virens Aureobasidium Pullulans Staphylococcus Aureus  
 Klebsiella Pneumoniae Salmonella Choleraesuis Pseudomonas Aeruginosa

**STAIN RESISTANCE**

Stain Resistance per CFFA 141 (Determines the resistance of a fabric to staining when subjected to common house-hold stains and cleaning agents) - Class 5 (Excellent) rating:

Butter	Blood	Coffee	Hair Spray	Iodine/Betadine	Ketchup	Lipstick	Liquid Foundation	Mascara
Mayonnaise	Motor Oil	Salad Dressing	Soda	Soy Sauce	Suntan Lotion	Tea	Urine	Whiskey

**CLEANING INFORMATION**

WS: Water/Solvent Cleaner – Spot clean, with a mild solvent, an upholstery shampoo, or the foam from a mild detergent. When using a solvent or dry cleaning product, follow instructions carefully and clean only in a well-ventilated room. Avoid any product that contains carbon tetrachloride or other toxic materials. With either method, pretest a small area before proceeding.

Prompt cleaning is always recommended. Recommended cleaning steps are listed by type of stain. For best results follow steps in order.  
 Bleach Cleanable - 1:10 ratio = 10% bleach, 90% water solution

**Recommended Care and Cleaning Steps**

- Step 1: Mild soap and water, then rinse with fresh water and wipe dry with a clean cloth.
- Step 2: Wipe affected area with a soft cloth or soft bristle brush using a non-abrasive cleaner, i.e. Formula 409 or Fantastik. Rinse with fresh water and wipe dry.
- Step 3: 10% solution of household bleach and water. Rinse with fresh water and wipe dry.
- Step 4: 25% solution of alcohol and water. Rinse with fresh water and wipe dry.
- Step 5: 25% solution of lighter fluid or nail polish remover and water. Rinse with fresh water and wipe dry.

**Regular cleaning and Maintenance:** Step 1 (*Dirt, Dust, Grime*)

**Oils:** Steps 1 & 2 (*Organic & Petroleum based*)      **Healthcare:** Steps 1, 2 & 3 (*Blood, Urine, Betadine*)  
**Food:** Steps 1 & 2 (*Ketchup, Chocolate, Coffee, Tea, Juice*)      **Difficult Stains:** Steps 1, 2, 3, 4 & 5 (*Eye shadow/Mascara, Lipstick, Crayon, Grease, Mustard, Paint*)

*NOTE: The use of commercial vinyl conditioners and protectants is NOT RECOMMENDED.  
 The information in this cleaning guide refers to performance of Resilience in tests conducted under laboratory conditions. This information does not imply a specific guarantee and does not relieve the user from the responsibility of the proper and safe use of the product and referenced cleaning agents.*

**ADDITIONAL INFORMATION**

**Custom Capabilities:** All patterns can be custom colored. Minimum yardage applies.  
**Memo Samples:** Please keep this card intact. Individual memo samples can be ordered on our website or by contacting customer service.  
**Color Matching:** Mayer Fabrics always attempts to ship a satisfactory commercial match. Because of industry standard dye lot variation, colors may not match exactly.  
**Specifications:** Specifications are correct at the time of printing. Current specifications are available on our website.  
**For information or assistance with products or services, call us at 800.428.4415 or refer to our website, www.mayerfabrics.com.**





# UPHOLSTERY LEATHER



UFB 0092  
Latte



UFB 0086  
Taupe



UFB 0094  
Toasty



UFB 0093  
Quartersawn Oak



UFB 0089  
Chocolate



UFB 0097  
White



UFB 0096  
Lemon Verbena



UFB 0091  
Monorail Silver



UFB 0095  
Denim



UFB 0087  
Atlantis



UFB 0090  
Light French Grey



UFB 0088  
Dovetail



UFB 0085  
Black

## Catalina II

POWERED BY  
 CRYPTON<sup>®</sup>



UFB 0163  
Hazel



UFB 0104  
Chocolate



UFB 0166  
Appalachian Brown



UFB 0103  
Brown



UFB 0160  
Char Brown



UFB 0164  
Oak Bark



UFB 0167  
Rustic Brick



UFB 0162  
Jungle Green



UFB 0161  
True Green



UFB 0105  
Amazon Moss



UFB 0165  
Vintage Wine



UFB 0184  
Midnight Blue



UFB 0106  
Black

## Standard Offering

## Description



A top grain, lightly corrected, semi-aniline leather Powered by Crypton®, Catalina II is bleach cleanable, antibacterial, and stain resistant. Fully aniline dyed and highlighted by an embossed pebble grain, it is durable and perfect for high traffic areas.

### Standard Offering

A quality semi-aniline, top grain leather with a soft hand and a good drape, finished with a durable, yet light, finish. Natural markings are minimized by enhancing the surface with an embossed grain which maximizes the yield and increases the cutting area.

## Common Characteristics

### Technical

Raw Material:	Top Grain; Aniline Dyed
Finish:	Semi-Aniline
Hide Size:	50 - 55 Sq. Ft.
Weight:	2.5 - 3.0 Oz. Per Sq. Ft.
Thickness:	1.0 - 1.2 MM

### Performance

Abrasion Resistance:	ASTM D7255; CS10 Wheel Taber, 1,000 Cycles w/1,000 Gram Weight
Flexibility:	ASTM D2097; 70,000 Cycles
Dry Crocking:	ASTM D5053; Class 4 or Better
Wet Crocking:	ASTM D5053; Class 4 or Better
Color Fastness:	AATCC 16E Xenon; Class 4 Minimum @ 72 Hrs.
Elongation:	FTMS 311-2031; 40% Maximum @ 100 lbs.

### Flame Resistance

CAL TB117-2013	<input checked="" type="checkbox"/> Passes
Boston Fire Code	<input checked="" type="checkbox"/> Passes
NY / NJ Port Authority	<input checked="" type="checkbox"/> Passes
NFPA 260 - Class 1	<input checked="" type="checkbox"/> Passes

## Catalina II with Crypton® Protection

Stain Resistance:	AATCC 130-2000; 5 (Excellent) Rating
Antibacterial:	AATCC 100; 99.9% Reduction of Bacteria, 3rd Party NAMSA, AATCC 4352, AATCC 6538
Water Repellency:	AATCC 22-2005; Grade 100 (Highest Rating)
Water Resistance:	AATCC 127-2003; 110+CM/Suter Open Plate

## Care and Cleaning

Genuine leather requires the least care of all upholstery materials; dusting with a clean, dry cloth is the recommended routine cleaning method. For spots and spills, wipe excess liquid immediately and let air dry. If necessary, use warm water and mild non-detergent soap, work into a thin lather with a soft cloth, rinse with clean water, and buff to restore lustre. Catalina II Powered by Crypton® is cleanable with a solution containing up to 10% bleach.