



# FINISH OPTIONS

Effective May 2018

# PERFORMANCE. QUALITY. DESIGN.

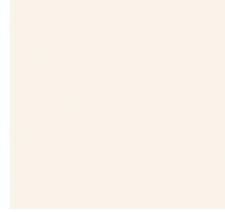
We have taken great care to accurately reproduce these finish options. However, there may be variations between the photographic and actual finishes.

Samples are available upon request.

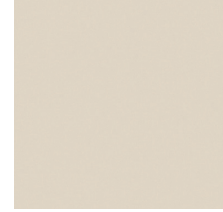
Also, finished products may vary slightly. We cannot assure an exact piece-to-piece match due to certain variations in raw materials such as wood.

Not all finishes are available on all product lines. Contact an OFG Sales Representative for more information and samples. To locate your local UNICOR/OFG Sales Representative, go online to [www.unicor.gov/OFGSalesReps.aspx](http://www.unicor.gov/OFGSalesReps.aspx)

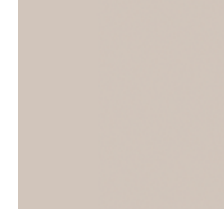
## SOLID LAMINATE FINISHES



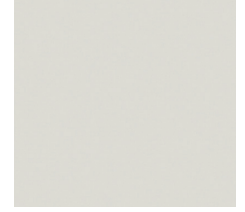
Sail White  
AA 463-58  
PLM-0058



Pumice  
FF 858-58  
PLM-2515



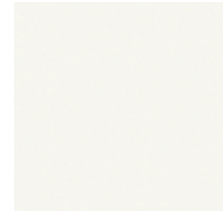
Oyster Gray  
BM 929-58  
PLM-2519



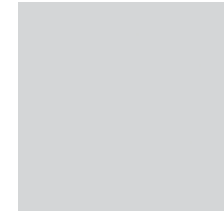
Graystone  
FH 464-58  
PLM-2505



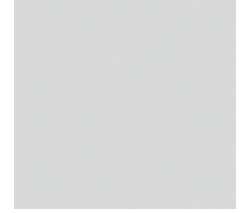
Brite White \*  
FP 459-58  
PLM-0630



Neutral White  
FG 918-58  
PLM-2516



Fashion Gray \*  
RS D381-60  
PLM-0787



Folkstone  
FK 927-58  
PLM-2517



Black \*  
AG 909-58  
PLM-0111



Dove Grey  
DD D92-58  
PLM-1013



Mouse  
FM 928-58  
PLM-2518



Graphite  
FN 837-58  
PLM-2514

\* – Finishes with matching trim.  
○ – Integrate casegoods finishes.

# WOOD LAMINATE FINISHES



Kensington Maple \*○  
KE 10776-78  
PLM-1077



Amber Cherry \*○  
AB 7919-78  
PLM-7919



Colombian Walnut \*○  
CI 7943K-78  
PLM-7943



Ebony Ribbonwood  
ER 873-58  
PLM-0162



Myriad Ribbonwood  
MR 863-58  
PLM-0161



Ashen Ribbonwood  
AR 8839-58  
PLM-0100



Noble Mahogany \*○  
NM 9236-NG  
PLM-9236



Shaker Cherry \*○  
SK 7935K-78  
PLM-7935



Sterling Ash  
SA 7995-78  
PLM-7995



Light Oak \*○  
LO 8202-78  
PLM-8202



Silver Oak \*○  
SO 8203-78  
PLM-8203



Buka Bark \*○  
BK 7982-78  
PLM-7982



Biltmore Cherry \*○  
BT 7924K-78  
PLM-7924



Studio Teak \*○  
SU 7960K-78  
PLM-7960



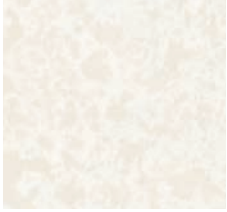
Harvest Maple \*○  
HM 7953-78  
PLM-2616



Rio \*○  
RI 7947K-78  
PLM-0554

\* – Finishes with matching trim.  
○ – Integrate casegoods finishes.

## PATTERN LAMINATE FINISHES



Sail White Oxide  
FA 300-58  
PLM-0133



Flax Gauze  
BP 7708-58  
PLM-2513



SandStone  
AU 7265-58  
PLM-0067



Shoji Screen  
BN 3696-58  
PLM-2504



Pewter Mesh  
DA 4878-38  
PLM-4046



White Tigris  
CP 4783-60  
PLM-4043



Natural Canvas  
FC 7022-58  
PLM-2509



Canyon Zephyr  
CU 4842-60  
PLM-4038



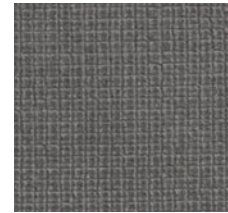
Misted Zephyr  
CV 4843-60  
PLM-4040



Twilight Zephyr  
CX 4845-60  
PLM-4041



Desert Zephyr  
CS 4841-60  
PLM-4039



Steel Mesh  
DB 4879-38  
PLM-4068



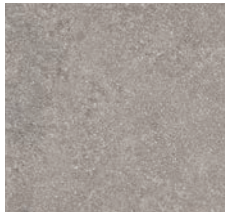
Grey Tigris  
CT 4670-60  
PLM-4042



Earth Wash  
FE 7213-58  
PLM-2510



Earthen Warp  
GF 5880-58  
PLM-4052

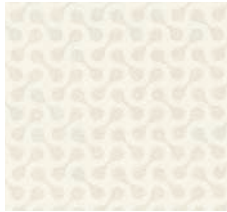


Pearl Soapstone  
CR 4886-38  
PLM-4045



Elemental Stone  
ES 8831-58  
PLM-1005

## ACCENT LAMINATE FINISHES



Dogbone White  
FR 5281-58  
PLM-4057



Astro Strandz \*  
AS 4940-18  
PLM-1006



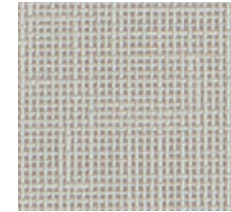
Cosmic Strandz  
CO 4941K-18  
PLM-4941



Vapor Strandz  
VS 4939K-18  
PLM-4939



Crisp Linen  
CQ 4942-38  
PLM-4942



Classic Linen  
CL 4943-38  
PLM-4943



Casual Linen  
CW 4944-38  
PLM-4944



White Twill \*○  
WT 9285-58  
PLM-1007



Neural Twill \*○  
NT 8826-58  
PLM-0163



Sarum Twill \*○  
ST 8827-58  
PLM-0164



Denim Twill  
DT 8814-58  
PLM-1008



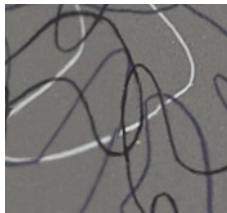
Graphite Twill \*○  
GT 8829-58  
PLM-0166



Earthen Twill \*○  
ET 8828-58  
PLM-0165



Sarum Duotex  
SX 6447-58  
PLM-6447



Charcoal Boomerang  
BC 6942-58  
PLM-6942



Storm Hex  
SH 6474-58  
PLM-6474



Folkstone Hex  
FJ 6473-58  
PLM-6473



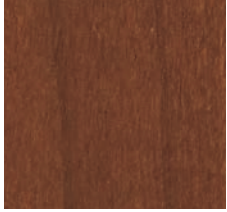
Gloss White  
Markerboard  
MB 949-90  
PLM-2521



Magnetic Markerboard  
MM M4702-00  
PLM-4702

\* – Finishes with matching trim.  
○ – Integrate casegoods finishes.

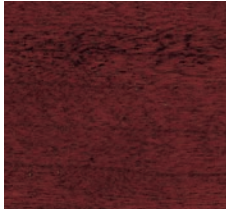
## WOOD FINISHES/CASEGOODS



Walnut  
WN

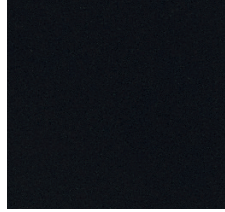


Cherry  
CH

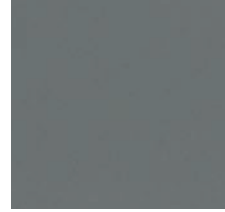


Mahogany  
MH

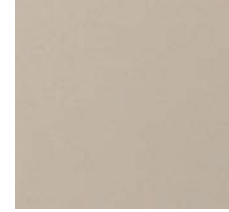
## METAL FINISHES/SYSTEMS/FILING



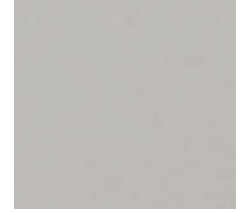
Black  
27



Gray  
29



Sand  
28



Light Tone  
32



Warm Gray  
33



Starlight Silver  
34



Cottonwood  
35

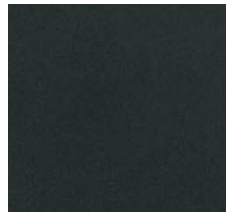
## HARDWARE FINISHES



Polished Brass  
PB  
(Standard on  
Baritone & Symphony)



Black Graphite  
BG  
(Standard on Concerto)



Satin Black  
(Standard on Harmony)



Brush Nickel  
(Standard on  
Integrate & Relevelate)

## METAL FINISHES/SEATING

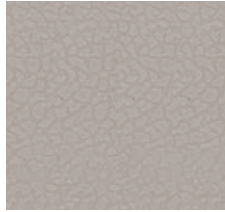


Chrome  
BCH  
(Wire frame finish –  
Seating only)

## PLASTIC SHELL FINISHES/SEATING



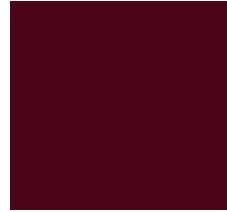
Black  
BL



Warm Gray  
WG



Sand  
SA



Bordeaux  
BD



Nordic  
ND

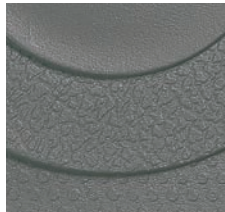


Cottonwood  
TT

## PLASTIC TRIM/EDGE FINISHES/SYSTEMS/CASEGOODS/FLOAT



Black  
B



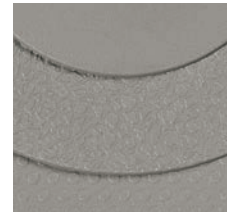
Gray  
G



Light Tone  
L



Sand  
S



Warm Gray  
W