

OFG UNICOR
OFFICE
FURNITURE
GROUP

Working together to make a difference!

ColorWorks

SYSTEM FURNITURE FABRICS



COLORWORKS™ SYSTEMS FABRICS

The Office Furniture Group (OFG) now positions its systems fabrics collection in-line with the ColorWorks™ Seating Program!

OFG's idea of servicing our customers to the best of our ability just took another step forward. The OFG team is proud to introduce a brand new way of marketing our systems fabrics – ColorWorks™ – the Systems Fabrics Guide. This brochure works hand-in-hand with the latest offerings in the OFG seating fabric program. Whether you are designing one office or an entire building, ColorWorks™ makes it easier to develop an outstanding scheme of colors and patterns anyone would be proud to call their own.

ColorWorks™ – The Systems Fabric Guide achieves this by offering new cutting edge designs that work collectively with our strongest selling patterns. This brochure was developed to allow mixing and matching of all of our fabrics, seating and systems. All you have to do is grab both of your ColorWorks™ brochures and let your mind wander about the infinite possibilities!

WHAT'S INSIDE

This brochure will introduce you to our 8 new and exciting patterns, MELANGE, NEXUS, PARAGON, RAIN DROPS, SPECTRE, TERRAIN, WHIRLWIND and ZEST. The newest in textural effects, yarn systems and crisp, elegant designs come together with 7 of our best-ever selling patterns to provide

you with an offering second to none. Easy to reference specifications and care information are provided for each pattern on the page following the images. As you review this new brochure, the OFG team hopes you appreciate that our seating fabrics and systems fabrics synergy make it easier to furnish your project, no matter how large or small. Each pattern and color-way was developed to mesh with other vertical patterns as well as any of the seating fabrics. In a word, what we hope to achieve for you, our valued customer, is..... Simplicity!

ORDERING IS SIMPLE

This brochure of photo color cards was created to assist in selecting your vertical fabrics with the greatest of ease. Every photo color card represents an actual sample card that can be ordered so you can touch and feel the fabric.

It is just so simple! Feel free to contact Mayer Fabrics Customer Service Center by faxing your request to 800-7SAMPLE (772-6753) or going to www.unicor.gov to request samples. Use the corresponding stock numbers listed under the item or items you desire when ordering. Vertical fabric memo samples are 8" X 10".

NOTE: Each pattern has a specific pricing group associated with it. These price points can be found in the back of the ColorWorks™ – Systems Fabrics Catalog (page 32).

For fabric samples contact:



OFG COLORWORKS™ SYSTEMS FABRICS

Group A:

- Copa..... 1-2
- Equal 3-4
- Grasscloth 5-6
- Nexus..... 7-8
- Whirlwind 9-10
- Zest 11-12

Group B:

- Melange (Gray Scale, Showing Pattern Repeat)..... 13-14
- Nitro..... 15-16
- Ovation 17-18
- Paragon 19-20
- Pick Up Sticks..... 21-22
- Space Odyssey..... 23-24
- Spectre..... 25-26

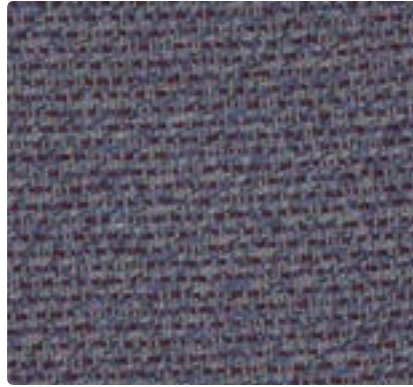
Group C:

- Rain Drops..... 27-28
- Terrain..... 29-30

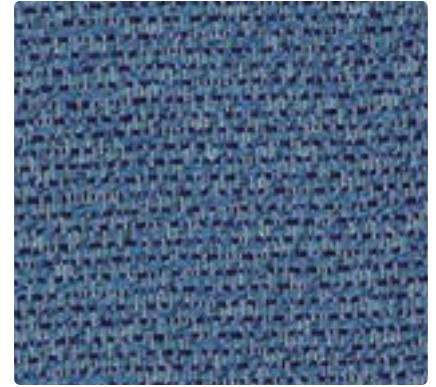
- Environmental Information..... 31
- ColorWorks™ Systems Fabric Pricing Matrix 32



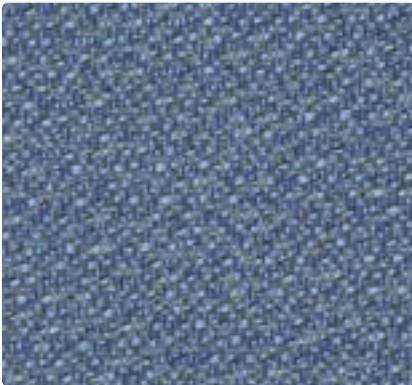
FAB6600 Bryce Canyon



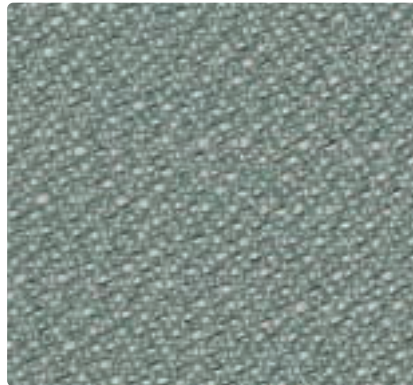
FAB6601 Rushmore



FAB6602 Huron



FAB9470 Balboa



FAB9468 Green Bay



FAB6603 Padre



FAB9463 Huntington



FAB9462 Newport



FAB9461 Smith Point



FAB9460 Hermosa



FAB9458 Cape May



FAB6604 Heartland





TECHNICAL INFORMATION

Content: 55% Post Industrial Recycled Polyester,
45% Post Consumer Recycled Polyester
Width: 66"
Weight: 11.5 oz./linear yard

Backing: None
Finish: None
Cleaning Code: WS

Approx. Repeat: None
Directional: Yes
Railroaded: No

PERFORMANCE

	Test Method	Results
Surface Abrasion: Heavy Duty 	ASTM-D-3597 Wyzenbeek Test	Exceeds 15,000 Double Rubs
Breaking Strength: 	ASTM-D-5034	Exceeds Warp 100 lbs/Fill 125 lbs
Colorfastness to Crocking: 	AATCC-8	Dry: Passes Class 4 min/Wet: Passes Class 3 min
Colorfastness to Light: 	AATCC-16	Exceeds 40 Hours - Class 4 min

Class in the colorfastness requirements is based on a numerical scale of 5 for negligible or no color transfer to 1 for very severe color change or color transfer.

FLAMMABILITY 

ASTM E84 Class 1 or A Passes
California Technical Bulletin 117, Section E (Equivalent to BIFMA) Passes

CLEANING INFORMATION

WS: Water/Solvent Cleaner – Spot clean, with a mild solvent, an upholstery shampoo, or the foam from a mild detergent. When using a solvent or dry cleaning product, follow instructions carefully and clean only in a well-ventilated room. Avoid any product that contains carbon tetrachloride or other toxic materials. With either method, pretest a small area before proceeding.

For detailed specifications, care and cleaning information, please refer to the Mayer Fabrics web site at www.mayerfabrics.com.

Please keep this card intact. Individual memo samples are available. Please contact Mayer Fabrics or refer to the Mayer Fabrics web site. Color matching: Mayer will always attempt to ship a satisfactory commercial match. Because of industry standard dye lot variation, colors may not match exactly. Specifications are correct at time of printing. Current specifications are available on the Mayer Fabrics web site. www.mayerfabrics.com

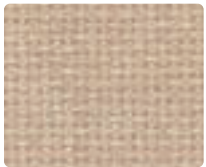
*ACT® Registered Certification Marks



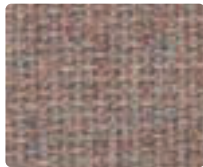
Terratex® is a registered trademark of True Textiles Inc. and designates fabrics that are made from 100% recycled or compostable materials using increasingly sustainable manufacturing practices to produce a high quality product that is recyclable at the end of its useful life.



This 100% polyester panel fabric is included in the Underwriters Laboratory Fabric Recognition Program. Additional testing of this U.L. recognized component fabric is not required on approved panels from participating manufacturers.



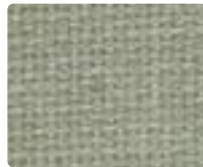
FAB1555
Buff



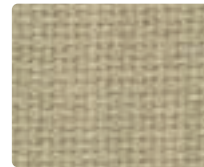
FAB1553
Rose Quartz



FAB1511
Blue Neutral



FAB9479
Stream



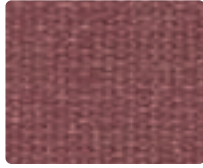
FAB9478
Dune



FAB1505
Pearl



FAB1556
Vanilla Neutral



FAB1543
Sienna



FAB1516
Bleu Papier



FAB1506
Green Neutral



FAB9480
Leaf



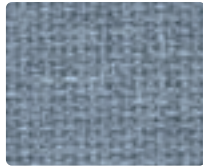
FAB1525
Opal



FAB9475
Straw



FAB1544
Claret Accent



FAB1512
Crystal Blue



FAB9482
Blue Spruce



FAB9474
Bone



FAB1510
Silver Papier



FAB1545
Apricot Neutral



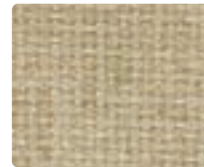
FAB1549
Deep Burgundy



FAB1513
Bayberry



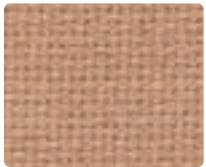
FAB1502
Eucalyptus



FAB1530
Wheat



FAB9472
Cement Mix



FAB9473
Terra



FAB1521
Lavender Neutral



FAB9483
Lake



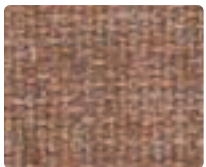
FAB1501
Verte Papier



FAB9481
Light Moss



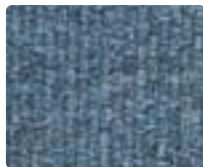
FAB1526
Silver Neutral



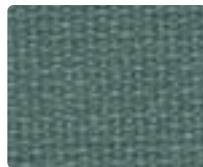
FAB1558
Cinnabar



FAB9476
Lilac



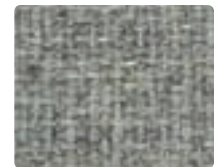
FAB1518
Wedgewood



FAB1507
Chrome Green



FAB1515
Quartz



FAB1531
Grey Mix



FAB1546
Cherry Neutral



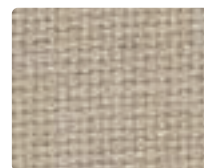
FAB1522
Amethyst



FAB1528
Baltic



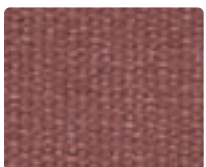
FAB1508
Aquamarine



FAB9471
Desert Sand



FAB1533
Medium Grey



FAB1548
Bronze



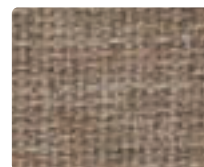
FAB9477
Violet



FAB1524
Blue Plum



FAB1514
Ultramarine



FAB1552
Pumice



FAB1534
Black





TECHNICAL INFORMATION

Content: 100% Post Consumer Recycled Polyester
 Width: 66"
 Weight: 16 oz./linear yard

Backing: None
 Finish: None
 Cleaning Code: WS

Approx. Repeat: None
 Directional: No
 Railroaded: No

PERFORMANCE

	Test Method	Results
Surface Abrasion: Heavy Duty 	ASTM-D-3597	Exceeds 15,000 Double Rubs
Breaking Strength: Tensile 	ASTM-D-5034	Exceeds Warp 150 lbs min/Fill 150 lbs min
Colorfastness to Crocking: 	AATCC-8	Dry: Passes Class 4 min/Wet: Passes Class 3 min
Colorfastness to Light: 	AATCC-16 Option 3	Exceeds 40 Hours - Class 5

Class in the colorfastness requirements is based on a numerical scale of 5 for negligible or no color transfer to 1 for very severe color change or color transfer.

FLAMMABILITY 

ASTM E84 Class 1 or A Passes
 California Technical Bulletin 117, Section E (Equivalent to BIFMA) Passes

CLEANING INFORMATION

WS: Water/Solvent Cleaner – Spot clean, with a mild solvent, an upholstery shampoo, or the foam from a mild detergent. When using a solvent or dry cleaning product, follow instructions carefully and clean only in a well-ventilated room. Avoid any product that contains carbon tetrachloride or other toxic materials. With either method, pretest a small area before proceeding.

For detailed specifications, care and cleaning information, please refer to the Mayer Fabrics web site at www.mayerfabrics.com.

Please keep this card intact. Individual memo samples are available. Please contact Mayer Fabrics or refer to the Mayer Fabrics web site. Color matching: Mayer will always attempt to ship a satisfactory commercial match. Because of industry standard dye lot variation, colors may not match exactly. Specifications are correct at time of printing. Current specifications are available on the Mayer Fabrics web site. www.mayerfabrics.com

*ACT® Registered Certification Marks



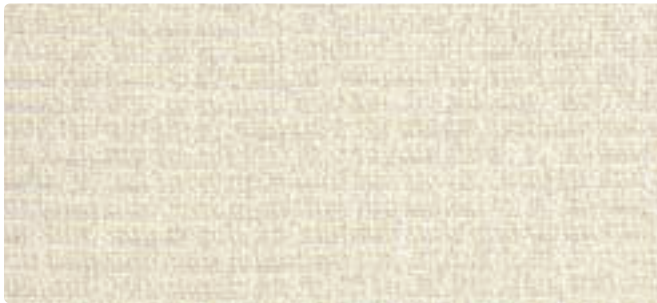
Terratex® is a registered trademark of True Textiles Inc. and designates fabrics that are made from 100% recycled or compostable materials using increasingly sustainable manufacturing practices to produce a high quality product that is recyclable at the end of its useful life.



This 100% polyester panel fabric is included in the Underwriters Laboratory Fabric Recognition Program. Additional testing of this U.L. recognized component fabric is not required on approved panels from participating manufacturers.



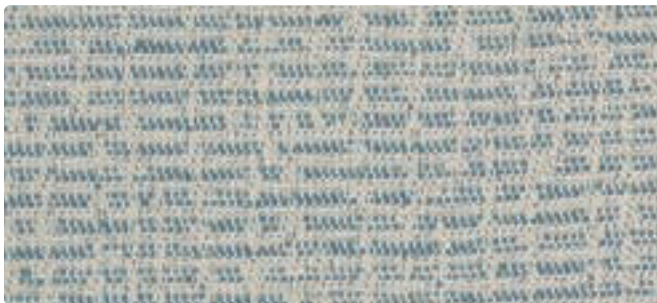
FAB0281 Fog



FAB0282 Bone



FAB0284 Mushroom



FAB0279 Blue Sky



FAB0278 Laurel



FAB0280 Lavender Neutral



FAB0283 Pewter





TECHNICAL INFORMATION

Content: 68% Post Industrial Recycled Polyester,
32% Post Consumer Recycled Polyester
Width: 66"
Weight: 11.5 oz./linear yard

Backing: None
Finish: None
Cleaning Code: WS

Approx. Repeat: Non-Matching
Directional: Yes
Railroaded: No

PERFORMANCE

	Test Method	Results
Surface Abrasion: Heavy Duty 	ASTM-D-3597 Wyzenbeek Test	Exceeds 15,000 Double Rubs
Breaking Strength: 	ASTM-D-5034	Exceeds Warp 225 lbs min/Fill 100 lbs min
Colorfastness to Crocking: 	AATCC-8	Dry: Passes Class 4 min/Wet: Passes Class 3 min
Colorfastness to Light: 	AATCC-16 Option 3	Exceeds 40 Hours - Class 4 min

Class in the colorfastness requirements is based on a numerical scale of 5 for negligible or no color transfer to 1 for very severe color change or color transfer.

FLAMMABILITY 

ASTM E84 Class 1 or A Passes
California Technical Bulletin 117, Section E (Equivalent to BIFMA) Passes

CLEANING INFORMATION

WS: Water/Solvent Cleaner – Spot clean, with a mild solvent, an upholstery shampoo, or the foam from a mild detergent. When using a solvent or dry cleaning product, follow instructions carefully and clean only in a well-ventilated room. Avoid any product that contains carbon tetrachloride or other toxic materials. With either method, pretest a small area before proceeding.

For detailed specifications, care and cleaning information, please refer to the Mayer Fabrics web site at www.mayerfabrics.com.

Please keep this card intact. Individual memo samples are available. Please contact Mayer Fabrics or refer to the Mayer Fabrics web site. Color matching: Mayer will always attempt to ship a satisfactory commercial match. Because of industry standard dye lot variation, colors may not match exactly. Specifications are correct at time of printing. Current specifications are available on the Mayer Fabrics web site. www.mayerfabrics.com

*ACT® Registered Certification Marks



Terratex® is a registered trademark of True Textiles Inc. and designates fabrics that are made from 100% recycled or compostable materials using increasingly sustainable manufacturing practices to produce a high quality product that is recyclable at the end of its useful life.



This 100% polyester panel fabric is included in the Underwriters Laboratory Fabric Recognition Program. Additional testing of this U.L. recognized component fabric is not required on approved panels from participating manufacturers.



FAB7822 Vanilla



FAB7815 Pistachio



FAB7818 Khaki



FAB7821 Fog



FAB7819 Mesa



FAB7820 Sandstone



FAB7817 Pewter



FAB7816 Sky



FAB7814 Earth

TECHNICAL INFORMATION

Content: 84% Post Industrial Recycled Polyester,
16% Post Consumer Recycled Polyester
Width: 66"
Weight: 10.24 oz./linear yard

Backing: None
Finish: None
Cleaning Code: WS

Approx. Repeat: 1.454" H, 1.454" V Non-Matching
Directional: Yes
Railroaded: No

PERFORMANCE

	Test Method	Results
Breaking Strength: ★	ASTM-D-5034 (Grab Test)	Exceeds Warp 100 lbs/Fill 94 lbs
Seam Slippage: ★	ASTM-D-434	Exceeds Warp 65 lbs/Fill 89 lbs
Colorfastness to Crocking: ■	AATCC-8	Dry: Passes Class 4 min/Wet: Passes Class 3 min
Colorfastness to Light: ●	AATCC-16	Exceeds 40 Hours - Class 4 min

Class in the colorfastness requirements is based on a numerical scale of 5 for negligible or no color transfer to 1 for very severe color change or color transfer.

FLAMMABILITY ■

ASTM E84 Class 1 or A Passes
California Technical Bulletin 117, Section E (Equivalent to BIFMA) Passes

CLEANING INFORMATION

WS: Water/Solvent Cleaner – Spot clean, with a mild solvent, an upholstery shampoo, or the foam from a mild detergent. When using a solvent or dry cleaning product, follow instructions carefully and clean only in a well-ventilated room. Avoid any product that contains carbon tetrachloride or other toxic materials. With either method, pretest a small area before proceeding.

For detailed specifications, care and cleaning information, please refer to the Mayer Fabrics web site at www.mayerfabrics.com.

Please keep this card intact. Individual memo samples are available. Please contact Mayer Fabrics or refer to the Mayer Fabrics web site. Color matching: Mayer will always attempt to ship a satisfactory commercial match. Because of industry standard dye lot variation, colors may not match exactly. Specifications are correct at time of printing. Current specifications are available on the Mayer Fabrics web site. www.mayerfabrics.com

*ACT® Registered Certification Marks



This 100% polyester panel fabric is included in the Underwriters Laboratory Fabric Recognition Program. Additional testing of this U.L. recognized component fabric is not required on approved panels from participating manufacturers.



FAB7857 **Sunbeam**



FAB7863 **Wasabi**



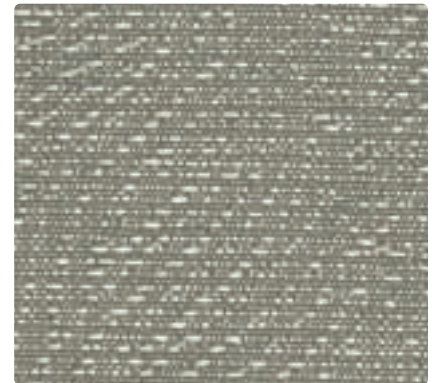
FAB7864 **Sterling**



FAB7858 **Pistachio**



FAB7861 **Beach**



FAB7856 **Cliff**



FAB7859 **Harbor**



FAB7862 **Tawny**



FAB7860 **Storm**

TECHNICAL INFORMATION

Content: 72% Post Industrial Recycled Polyester,
28% Post Consumer Recycled Polyester,
Width: 66"
Weight: 11.6 oz./linear yard

Backing: None
Finish: None
Cleaning Code: WS

Approx. Repeat: 16.2" H, 10.5" V Non-Matching
Directional: Yes
Railroaded: No

PERFORMANCE

	Test Method	Results
Breaking Strength: ★	ASTM-D-5034	Exceeds Warp 225 lbs min/Fill 100 lbs min
Colorfastness to Crocking: ■	AATCC-8	Dry: Passes Class 4 min/Wet: Passes Class 3 min
Colorfastness to Light: ●	AATCC-16	Exceeds 40 Hours - Class 4 min

Class in the colorfastness requirements is based on a numerical scale of 5 for negligible or no color transfer to 1 for very severe color change or color transfer.

FLAMMABILITY ■

ASTM E84 Class 1 or A Passes

CLEANING INFORMATION

WS: Water/Solvent Cleaner – Spot clean, with a mild solvent, an upholstery shampoo, or the foam from a mild detergent. When using a solvent or dry cleaning product, follow instructions carefully and clean only in a well-ventilated room. Avoid any product that contains carbon tetrachloride or other toxic materials. With either method, pretest a small area before proceeding.

For detailed specifications, care and cleaning information, please refer to the Mayer Fabrics web site at www.mayerfabrics.com.

Please keep this card intact. Individual memo samples are available. Please contact Mayer Fabrics or refer to the Mayer Fabrics web site. Color matching: Mayer will always attempt to ship a satisfactory commercial match. Because of industry standard dye lot variation, colors may not match exactly. Specifications are correct at time of printing. Current specifications are available on the Mayer Fabrics web site. www.mayerfabrics.com

*ACT® Registered Certification Marks



100% of the electricity used to make this product is matched by GREEN-E certified Renewable Energy Certificate (www.green-e.org)



Terratex® is a registered trademark of True Textiles Inc. and designates fabrics that are made from 100% recycled or compostable materials using increasingly sustainable manufacturing practices to produce a high quality product that is recyclable at the end of its useful life.



This 100% polyester panel fabric is included in the Underwriters Laboratory Fabric Recognition Program. Additional testing of this U.L. recognized component fabric is not required on approved panels from participating manufacturers.



FAB7871 **Fog**



FAB7869 **Quartz**



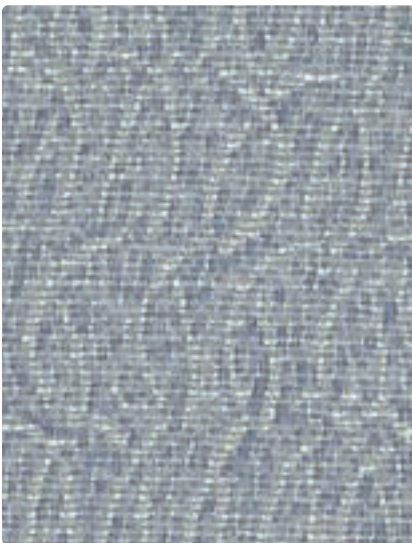
FAB7868 **Zinc**



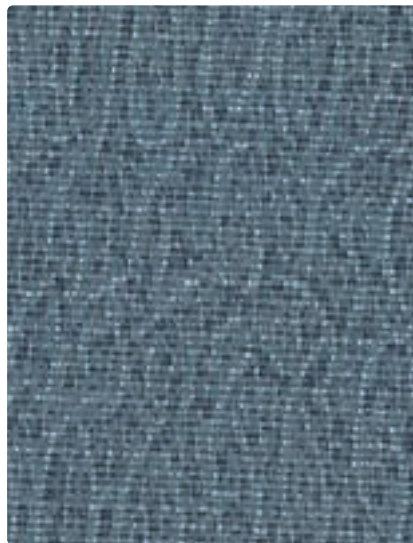
FAB7866 **Meadow**



FAB7865 **Harvest**



FAB7867 **Sky**



FAB5771 **Harbor**



FAB7870 **Spice**

TECHNICAL INFORMATION

Content: 100% Post Industrial Recycled Polyester
 Width: 66"
 Weight: 10.04 oz./linear yard

Backing: None
 Finish: None
 Cleaning Code: WS

Approx. Repeat: 14.125" H, 12.25" V Non-Matching
 Directional: Yes
 Railroaded: No

PERFORMANCE

	Test Method	Results
Breaking Strength: ★	ASTM-D-5034	Exceeds Warp 266 lbs/Fill 203 lbs
Colorfastness to Crocking: ■	AATCC-8	Dry: Passes Class 4/Wet: Passes Class 3.5
Colorfastness to Light: ●	AATCC-16A	Exceeds 60 Hours - Class 4

Class in the colorfastness requirements is based on a numerical scale of 5 for negligible or no color transfer to 1 for very severe color change or color transfer.

FLAMMABILITY ■

ASTM E84 Class 1 or A Passes


CLEANING INFORMATION

WS: Water/Solvent Cleaner – Spot clean, with a mild solvent, an upholstery shampoo, or the foam from a mild detergent. When using a solvent or dry cleaning product, follow instructions carefully and clean only in a well-ventilated room. Avoid any product that contains carbon tetrachloride or other toxic materials. With either method, pretest a small area before proceeding.

For detailed specifications, care and cleaning information, please refer to the Mayer Fabrics web site at www.mayerfabrics.com.

Please keep this card intact. Individual memo samples are available. Please contact Mayer Fabrics or refer to the Mayer Fabrics web site. Color matching: Mayer will always attempt to ship a satisfactory commercial match. Because of industry standard dye lot variation, colors may not match exactly. Specifications are correct at time of printing. Current specifications are available on the Mayer Fabrics web site. www.mayerfabrics.com

*ACT® Registered Certification Marks

 This 100% polyester panel fabric is included in the Underwriters Laboratory Fabric Recognition Program. Additional testing of this U.L. recognized component fabric is not required on approved panels from participating manufacturers.



FAB7811 Driftwood



FAB7809 Blue Mist



FAB7808 Moonbeam



FAB7813 Fog



FAB7810 Cliff



FAB7812 Mesa



FAB7807 Shadow

TECHNICAL INFORMATION

Content: 79% Post Industrial Recycled Polyester,
21% Post Consumer Recycled Polyester
Width: 66"
Weight: 11.52 oz./linear yard

Backing: None
Finish: None
Cleaning Code: WS

Approx. Repeat: 6.75" H, 7.875" V Non-Matching
Directional: Yes
Railroaded: No

PERFORMANCE

	Test Method	Results
Breaking Strength: ★	ASTM-D-5034 (Grab Test)	Exceeds Warp 100 lbs/Fill 100 lbs
Seam Slippage: ★	ASTM-D-434	Exceeds Warp 69 lbs/Fill 95 lbs
Colorfastness to Crocking: ■	AATCC-8	Dry: Passes Class 4 min/Wet: Passes Class 3 min
Colorfastness to Light: ●	AATCC-16	Exceeds 40 Hours - Class 4 min

Class in the colorfastness requirements is based on a numerical scale of 5 for negligible or no color transfer to 1 for very severe color change or color transfer.

FLAMMABILITY

ASTM E84 Class 1 or A Passes
California Technical Bulletin 117, Section E (Equivalent to BIFMA) Passes
NFPA 260 (Equivalent to UFAC) Class 1 Passes

CLEANING INFORMATION

WS: Water/Solvent Cleaner – Spot clean, with a mild solvent, an upholstery shampoo, or the foam from a mild detergent. When using a solvent or dry cleaning product, follow instructions carefully and clean only in a well-ventilated room. Avoid any product that contains carbon tetrachloride or other toxic materials. With either method, pretest a small area before proceeding.

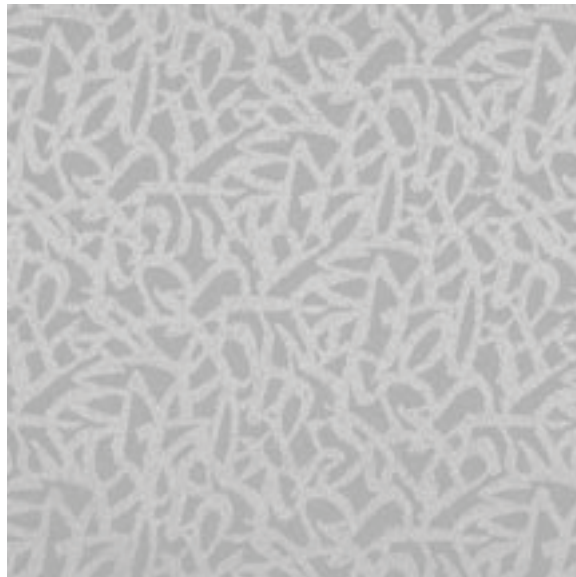
For detailed specifications, care and cleaning information, please refer to the Mayer Fabrics web site at www.mayerfabrics.com.

Please keep this card intact. Individual memo samples are available. Please contact Mayer Fabrics or refer to the Mayer Fabrics web site. Color matching: Mayer will always attempt to ship a satisfactory commercial match. Because of industry standard dye lot variation, colors may not match exactly. Specifications are correct at time of printing. Current specifications are available on the Mayer Fabrics web site. www.mayerfabrics.com

*ACT® Registered Certification Marks



This 100% polyester panel fabric is included in the Underwriters Laboratory Fabric Recognition Program. Additional testing of this U.L. recognized component fabric is not required on approved panels from participating manufacturers.



MELANGE - Repeat: 6.75" H, 7.875" V Non-Matching



FAB0318 **Crystal**



FAB0322 **Tonic**



FAB0319 **Spritzer**



FAB0320 **Cream Soda**



FAB0323 **Ginger Ale**



FAB0315 **Root Beer**



FAB0316 **Ale**



FAB0317 **Lemon Lime**



FAB0321 **Cherry Cola**

TECHNICAL INFORMATION

Content: 100% Post Consumer Recycled Polyester
 Width: 66"
 Weight: 12.3 oz./linear yard

Backing: None
 Finish: None
 Cleaning Code: WS

Approx. Repeat: 9.1" H, 16.7" V
 Directional: Yes
 Railroaded: No

PERFORMANCE

	Test Method	Results
Breaking Strength: ★	ASTM-D-5034	Exceeds Warp 220 lbs min/Fill 130 lbs min
Colorfastness to Crocking: ■	AATCC-8	Dry: Passes Class 4 min/Wet: Passes Class 3 min
Colorfastness to Light: ●	AATCC-16 Option 3	Exceeds 40 Hours - Class 4 min

Class in the colorfastness requirements is based on a numerical scale of 5 for negligible or no color transfer to 1 for very severe color change or color transfer.

FLAMMABILITY ■

ASTM E84 Class 1 or A Passes

CLEANING INFORMATION

WS: Water/Solvent Cleaner – Spot clean, with a mild solvent, an upholstery shampoo, or the foam from a mild detergent. When using a solvent or dry cleaning product, follow instructions carefully and clean only in a well-ventilated room. Avoid any product that contains carbon tetrachloride or other toxic materials. With either method, pretest a small area before proceeding.

For detailed specifications, care and cleaning information, please refer to the Mayer Fabrics web site at **www.mayerfabrics.com**.

Please keep this card intact. Individual memo samples are available. Please contact Mayer Fabrics or refer to the Mayer Fabrics web site. Color matching: Mayer will always attempt to ship a satisfactory commercial match. Because of industry standard dye lot variation, colors may not match exactly. Specifications are correct at time of printing. Current specifications are available on the Mayer Fabrics web site. **www.mayerfabrics.com**

*ACT® Registered Certification Marks



100% of the electricity used to make this product is matched by GREEN-E certified Renewable Energy Certificate (www.green-e.org)



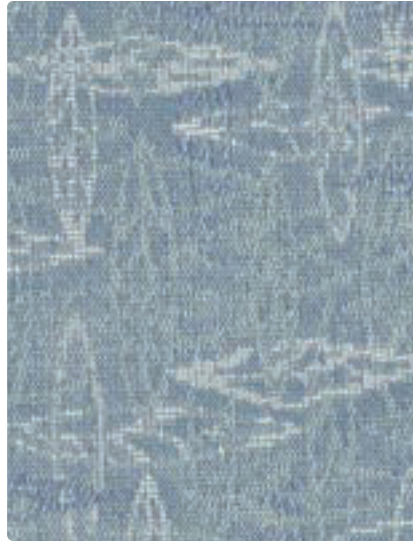
Terratex® is a registered trademark of True Textiles Inc. and designates fabrics that are made from 100% recycled or compostable materials using increasingly sustainable manufacturing practices to produce a high quality product that is recyclable at the end of its useful life.



This 100% polyester panel fabric is included in the Underwriters Laboratory Fabric Recognition Program. Additional testing of this U.L. recognized component fabric is not required on approved panels from participating manufacturers.



FAB0272 Hyacinth



FAB0276 Blue Mist



FAB0271 Deep Sea



FAB0275 Sunrise



FAB0270 Spruce



FAB0269 Khaki



FAB0274 Sandstone



FAB0277 Stucco



FAB0273 Shadow





TECHNICAL INFORMATION

Content: 51% Post Consumer Recycled Polyester,
49% Post Industrial Recycled Polyester
Width: 66"
Weight: 12.2 oz./linear yard

Backing: None
Finish: None
Cleaning Code: WS

Approx. Repeat: 8.25" H, 7.5" V Random Match
Directional: Yes
Railroaded: No

PERFORMANCE

	Test Method	Results
Surface Abrasion: Heavy Duty 	ASTM-D-3597 Wyzenbeek Test	Exceeds 15,000 Double Rubs
Breaking Strength: 	ASTM-D-5034	Exceeds Warp 250 lbs min/Fill 140 lbs min
Colorfastness to Crocking: 	AATCC-8	Dry: Passes Class 4 min/Wet: Passes Class 3 min
Colorfastness to Light: 	AATCC-16A	Exceeds 40 Hours - Class 4 min

Class in the colorfastness requirements is based on a numerical scale of 5 for negligible or no color transfer to 1 for very severe color change or color transfer.

FLAMMABILITY 

ASTM E84 Class 1 or A Passes
California Technical Bulletin 117, Section E (Equivalent to BIFMA) Passes

CLEANING INFORMATION

WS: Water/Solvent Cleaner – Spot clean, with a mild solvent, an upholstery shampoo, or the foam from a mild detergent. When using a solvent or dry cleaning product, follow instructions carefully and clean only in a well-ventilated room. Avoid any product that contains carbon tetrachloride or other toxic materials. With either method, pretest a small area before proceeding.

For detailed specifications, care and cleaning information, please refer to the Mayer Fabrics web site at www.mayerfabrics.com.

Please keep this card intact. Individual memo samples are available. Please contact Mayer Fabrics or refer to the Mayer Fabrics web site. Color matching: Mayer will always attempt to ship a satisfactory commercial match. Because of industry standard dye lot variation, colors may not match exactly. Specifications are correct at time of printing. Current specifications are available on the Mayer Fabrics web site. www.mayerfabrics.com

*ACT® Registered Certification Marks



Terratec® is a registered trademark of True Textiles Inc. and designates fabrics that are made from 100% recycled or compostable materials using increasingly sustainable manufacturing practices to produce a high quality product that is recyclable at the end of its useful life.



This 100% polyester panel fabric is included in the Underwriters Laboratory Fabric Recognition Program. Additional testing of this U.L. recognized component fabric is not required on approved panels from participating manufacturers.



FAB7829 **Blue Mist**



FAB7824 **Ambrosia**



FAB7827 **Quartz**



FAB7825 **Sky**



FAB7830 **Fog**



FAB7831 **Sand**



FAB7826 **Pewter**



FAB7828 **Spice**



FAB7823 **Cliff**

TECHNICAL INFORMATION

Content: 79% Post Industrial Recycled Polyester,
21% Post Consumer Recycled Polyester
Width: 66"
Weight: 11.52 oz./linear yard

Backing: None
Finish: None
Cleaning Code: WS

Approx. Repeat: Non-Matching
Directional: Yes
Railroaded: No

PERFORMANCE

	Test Method	Results
Breaking Strength: ★	ASTM-D-5034 (Grab Test)	Exceeds Warp 100 lbs/Fill 100 lbs
Seam Slippage: ★	ASTM-D-434	Exceeds Warp 98 lbs/Fill 97 lbs
Colorfastness to Crocking: ■	AATCC-8	Dry: Passes Class 4 min/Wet: Passes Class 3 min
Colorfastness to Light: ●	AATCC-16	Exceeds 40 Hours - Class 4 min

Class in the colorfastness requirements is based on a numerical scale of 5 for negligible or no color transfer to 1 for very severe color change or color transfer.

FLAMMABILITY ■

ASTM E84 Class 1 or A Passes
California Technical Bulletin 117, Section E (Equivalent to BIFMA) Passes

CLEANING INFORMATION

WS: Water/Solvent Cleaner – Spot clean, with a mild solvent, an upholstery shampoo, or the foam from a mild detergent. When using a solvent or dry cleaning product, follow instructions carefully and clean only in a well-ventilated room. Avoid any product that contains carbon tetrachloride or other toxic materials. With either method, pretest a small area before proceeding.

For detailed specifications, care and cleaning information, please refer to the Mayer Fabrics web site at www.mayerfabrics.com.

Please keep this card intact. Individual memo samples are available. Please contact Mayer Fabrics or refer to the Mayer Fabrics web site. Color matching: Mayer will always attempt to ship a satisfactory commercial match. Because of industry standard dye lot variation, colors may not match exactly. Specifications are correct at time of printing. Current specifications are available on the Mayer Fabrics web site. www.mayerfabrics.com

*ACT® Registered Certification Marks



This 100% polyester panel fabric is included in the Underwriters Laboratory Fabric Recognition Program. Additional testing of this U.L. recognized component fabric is not required on approved panels from participating manufacturers.



FAB6605 Lilac



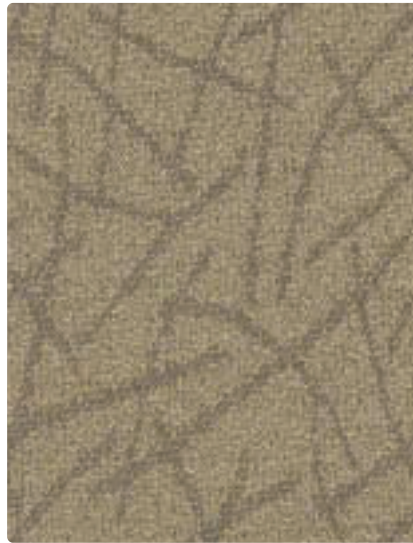
FAB9565 Harbor



FAB9566 Sapphire



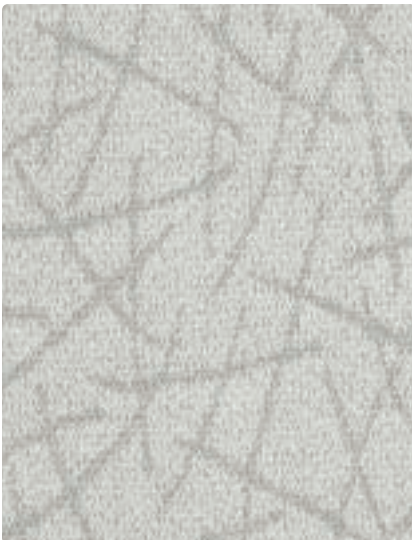
FAB9567 Celery



FAB6606 Mocha



FAB9568 Putty



FAB9558 Frost



FAB9564 Zinc



FAB9562 Hickory





TECHNICAL INFORMATION

Content: 56% Post Industrial Recycled Polyester,
44% Post Consumer Recycled Polyester
Width: 66"
Weight: 11 oz./linear yard

Backing: None
Finish: None
Cleaning Code: WS

Approx. Repeat: 8.25" H, 11.875" V
Directional: Yes
Railroaded: No

PERFORMANCE

	Test Method	Results
Surface Abrasion: Heavy Duty 	ASTM-D-3597 Wyzenbeek Test	Exceeds 15,000 Double Rubs
Breaking Strength: 	ASTM-D-5034	Exceeds Warp 190 lbs/Fill 95 lbs
Colorfastness to Crocking: 	AATCC-8	Dry: Passes Class 4 min/Wet: Passes Class 3 min
Colorfastness to Light: 	AATCC-16 Option 3	Exceeds 40 Hours - Class 4 min

Class in the colorfastness requirements is based on a numerical scale of 5 for negligible or no color transfer to 1 for very severe color change or color transfer.

FLAMMABILITY 

ASTM E84 Class 1 or A Passes
California Technical Bulletin 117, Section E (Equivalent to BIFMA) Passes

CLEANING INFORMATION

WS: Water/Solvent Cleaner – Spot clean, with a mild solvent, an upholstery shampoo, or the foam from a mild detergent. When using a solvent or dry cleaning product, follow instructions carefully and clean only in a well-ventilated room. Avoid any product that contains carbon tetrachloride or other toxic materials. With either method, pretest a small area before proceeding.

For detailed specifications, care and cleaning information, please refer to the Mayer Fabrics web site at www.mayerfabrics.com.

Please keep this card intact. Individual memo samples are available. Please contact Mayer Fabrics or refer to the Mayer Fabrics web site. Color matching: Mayer will always attempt to ship a satisfactory commercial match. Because of industry standard dye lot variation, colors may not match exactly. Specifications are correct at time of printing. Current specifications are available on the Mayer Fabrics web site. www.mayerfabrics.com

*ACT® Registered Certification Marks



Terratec® is a registered trademark of True Textiles Inc. and designates fabrics that are made from 100% recycled or compostable materials using increasingly sustainable manufacturing practices to produce a high quality product that is recyclable at the end of its useful life.



This 100% polyester panel fabric is included in the Underwriters Laboratory Fabric Recognition Program. Additional testing of this U.L. recognized component fabric is not required on approved panels from participating manufacturers.



FAB0307 Khaki



FAB0313 Tawny



FAB0309 Blue Mist



FAB0308 Wasabi



FAB0312 Mushroom



FAB0311 Pewter



FAB0310 Lavender Mist



FAB0314 Blue Slate





TECHNICAL INFORMATION

Content: 77% Post Industrial Recycled Polyester,
23% Post Consumer Recycled Polyester
Width: 66"
Weight: 12.1 oz./linear yard

Backing: None
Finish: None
Cleaning Code: WS

Approx. Repeat: 16.6" H, 8.7" V
Directional: Yes
Railroaded: No

PERFORMANCE

	Test Method	Results
Surface Abrasion: Heavy Duty 	ASTM-D-3597 Wyzenbeek Test	Exceeds 15,000 Double Rubs
Breaking Strength: 	ASTM-D-5034	Exceeds Warp 250 lbs/Fill 125 lbs
Colorfastness to Crocking: 	AATCC-8	Dry: Passes Class 4 min/Wet: Passes Class 3 min
Colorfastness to Light: 	AATCC-16 Option 3	Exceeds 40 Hours - Class 4 min

Class in the colorfastness requirements is based on a numerical scale of 5 for negligible or no color transfer to 1 for very severe color change or color transfer.

FLAMMABILITY 

ASTM E84 Class 1 or A Passes
California Technical Bulletin 117, Section E (Equivalent to BIFMA) Passes

CLEANING INFORMATION

WS: Water/Solvent Cleaner – Spot clean, with a mild solvent, an upholstery shampoo, or the foam from a mild detergent. When using a solvent or dry cleaning product, follow instructions carefully and clean only in a well-ventilated room. Avoid any product that contains carbon tetrachloride or other toxic materials. With either method, pretest a small area before proceeding.

For detailed specifications, care and cleaning information, please refer to the Mayer Fabrics web site at www.mayerfabrics.com.

Please keep this card intact. Individual memo samples are available. Please contact Mayer Fabrics or refer to the Mayer Fabrics web site. Color matching: Mayer will always attempt to ship a satisfactory commercial match. Because of industry standard dye lot variation, colors may not match exactly. Specifications are correct at time of printing. Current specifications are available on the Mayer Fabrics web site. www.mayerfabrics.com

*ACT® Registered Certification Marks



Terratex® is a registered trademark of True Textiles Inc. and designates fabrics that are made from 100% recycled or compostable materials using increasingly sustainable manufacturing practices to produce a high quality product that is recyclable at the end of its useful life.



This 100% polyester panel fabric is included in the Underwriters Laboratory Fabric Recognition Program. Additional testing of this U.L. recognized component fabric is not required on approved panels from participating manufacturers.



FAB7846 Cliff



FAB7842 Blue Mist



FAB7841 Meadow



FAB7844 Parchment



FAB7843 Pewter



FAB7845 Mesa



FAB7840 Shadow

TECHNICAL INFORMATION

Content: 82% Post Industrial Recycled Polyester,
18% Post Consumer Recycled Polyester
Width: 66"
Weight: 11.36 oz./linear yard

Backing: None
Finish: None
Cleaning Code: WS

Approx. Repeat: 6.28" H, 8" V Non-Matching
Directional: Yes
Railroaded: No

PERFORMANCE

	Test Method	Results
Breaking Strength: ★	ASTM-D-5034 (Grab Test)	Exceeds Warp 100 lbs/Fill 100 lbs
Seam Slippage: ★	ASTM-D-434	Exceeds Warp 81 lbs/Fill 72 lbs
Colorfastness to Crocking: ■	AATCC-8	Dry: Passes Class 4 min/Wet: Passes Class 3 min
Colorfastness to Light: ●	AATCC-16	Exceeds 40 Hours - Class 4 min

Class in the colorfastness requirements is based on a numerical scale of 5 for negligible or no color transfer to 1 for very severe color change or color transfer.

FLAMMABILITY

ASTM E84 Class 1 or A Passes
California Technical Bulletin 117, Section E (Equivalent to BIFMA) Passes

CLEANING INFORMATION

WS: Water/Solvent Cleaner – Spot clean, with a mild solvent, an upholstery shampoo, or the foam from a mild detergent. When using a solvent or dry cleaning product, follow instructions carefully and clean only in a well-ventilated room. Avoid any product that contains carbon tetrachloride or other toxic materials. With either method, pretest a small area before proceeding.

For detailed specifications, care and cleaning information, please refer to the Mayer Fabrics web site at www.mayerfabrics.com.

Please keep this card intact. Individual memo samples are available. Please contact Mayer Fabrics or refer to the Mayer Fabrics web site. Color matching: Mayer will always attempt to ship a satisfactory commercial match. Because of industry standard dye lot variation, colors may not match exactly. Specifications are correct at time of printing. Current specifications are available on the Mayer Fabrics web site. www.mayerfabrics.com

*ACT® Registered Certification Marks



This 100% polyester panel fabric is included in the Underwriters Laboratory Fabric Recognition Program. Additional testing of this U.L. recognized component fabric is not required on approved panels from participating manufacturers.



FAB7838 Frost



FAB7836 Mesa



FAB7839 Quartz



FAB7833 Sunbeam



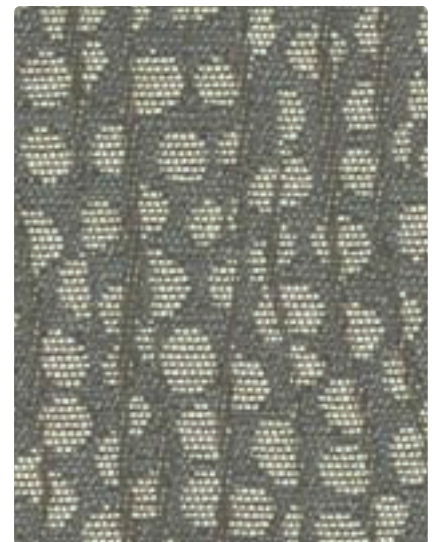
FAB7837 Sandstone



FAB7832 Bark



FAB7835 Beach



FAB7834 Storm

TECHNICAL INFORMATION

Content: 100% Post Consumer Recycled Polyester
 Width: 66"
 Weight: 12 oz./linear yard

Backing: None
 Finish: None
 Cleaning Code: WS

Approx. Repeat: 16.3" H, 12.5" V Non-Matching
 Directional: Yes
 Railroaded: No

PERFORMANCE

	Test Method	Results
Breaking Strength: ★	ASTM-D-5034	Exceeds Warp 250 lbs min/Fill 175 lbs min
Colorfastness to Crocking: ■■	AATCC-8	Dry: Passes Class 4 min/Wet: Passes Class 3 min
Colorfastness to Light: ●	AATCC-16	Exceeds 40 Hours - Class 4 min

Class in the colorfastness requirements is based on a numerical scale of 5 for negligible or no color transfer to 1 for very severe color change or color transfer.

FLAMMABILITY ■■

ASTM E84 Class 1 or A Passes

CLEANING INFORMATION

WS: Water/Solvent Cleaner – Spot clean, with a mild solvent, an upholstery shampoo, or the foam from a mild detergent. When using a solvent or dry cleaning product, follow instructions carefully and clean only in a well-ventilated room. Avoid any product that contains carbon tetrachloride or other toxic materials. With either method, pretest a small area before proceeding.

For detailed specifications, care and cleaning information, please refer to the Mayer Fabrics web site at **www.mayerfabrics.com**.

Please keep this card intact. Individual memo samples are available. Please contact Mayer Fabrics or refer to the Mayer Fabrics web site. Color matching: Mayer will always attempt to ship a satisfactory commercial match. Because of industry standard dye lot variation, colors may not match exactly. Specifications are correct at time of printing. Current specifications are available on the Mayer Fabrics web site. **www.mayerfabrics.com**

*ACT® Registered Certification Marks



100% of the electricity used to make this product is matched by GREEN-E certified Renewable Energy Certificate (www.green-e.org)



Terratex® is a registered trademark of True Textiles Inc. and designates fabrics that are made from 100% recycled or compostable materials using increasingly sustainable manufacturing practices to produce a high quality product that is recyclable at the end of its useful life.



This 100% polyester panel fabric is included in the Underwriters Laboratory Fabric Recognition Program. Additional testing of this U.L. recognized component fabric is not required on approved panels from participating manufacturers.



FAB7852 **Parchment**



FAB7849 **Meadow**



FAB7855 **Frost**



FAB7848 **Maize**



FAB7850 **Blue Mist**



FAB7854 **Fog**



FAB7853 **Furrow**



FAB7851 **Cliff**



FAB7847 **Bark**

TECHNICAL INFORMATION

Content: 100% Post Consumer Recycled Polyester
 Width: 66"
 Weight: 16 oz./linear yard

Backing: None
 Finish: None
 Cleaning Code: WS

Approx. Repeat: 0" H, Non-Matching V
 Directional: Yes
 Railroaded: No

PERFORMANCE

	Test Method	Results
Breaking Strength: ★	ASTM-D-5034	Exceeds Warp 250 lbs min/Fill 150 lbs min
Colorfastness to Crocking: ■	AATCC-8	Dry: Passes Class 4 min/Wet: Passes Class 3 min
Colorfastness to Light: ●	AATCC-16	Exceeds 40 Hours - Class 4 min

Class in the colorfastness requirements is based on a numerical scale of 5 for negligible or no color transfer to 1 for very severe color change or color transfer.

FLAMMABILITY ■

ASTM E84 Class 1 or A Passes

CLEANING INFORMATION

WS: Water/Solvent Cleaner – Spot clean, with a mild solvent, an upholstery shampoo, or the foam from a mild detergent. When using a solvent or dry cleaning product, follow instructions carefully and clean only in a well-ventilated room. Avoid any product that contains carbon tetrachloride or other toxic materials. With either method, pretest a small area before proceeding.

For detailed specifications, care and cleaning information, please refer to the Mayer Fabrics web site at www.mayerfabrics.com.

Please keep this card intact. Individual memo samples are available. Please contact Mayer Fabrics or refer to the Mayer Fabrics web site. Color matching: Mayer will always attempt to ship a satisfactory commercial match. Because of industry standard dye lot variation, colors may not match exactly. Specifications are correct at time of printing. Current specifications are available on the Mayer Fabrics web site. www.mayerfabrics.com

*ACT® Registered Certification Marks



100% of the electricity used to make this product is matched by GREEN-E certified Renewable Energy Certificate (www.green-e.org)



Terratex® is a registered trademark of True Textiles Inc. and designates fabrics that are made from 100% recycled or compostable materials using increasingly sustainable manufacturing practices to produce a high quality product that is recyclable at the end of its useful life.



This 100% polyester panel fabric is included in the Underwriters Laboratory Fabric Recognition Program. Additional testing of this U.L. recognized component fabric is not required on approved panels from participating manufacturers.

E N V I R O N M E N T A L I N F O R M A T I O N

Pattern	Post Industrial Content %	Post Consumer Content %	Terratex	Green E
Copa	.55	.45	T	
Equal		.100	T	
Grasscloth	.68	.32	T	
Melange	.79	.21		
Nexus	.84	.16		
Nitro		.100	T	G
Ovation	.51	.49	T	
Paragon	.79	.21		
Pick Up Sticks	.56	.44	T	
Rain Drops		.100	T	G
Space Odyssey	.77	.23	T	
Spectre	.82	.18		
Terrain		.100	T	G
Whirlwind	.72	.28	T	G
Zest	.100			

T = Terratex is a registered trademark of True Textiles Inc, and designates fabrics that are made from 100% recycled or compostable materials using increasingly sustainable manufacturing practices to produce a high quality product that is recyclable at the end of its useful life.

G = 100% of the electricity used is matched by GREEN-E certified Renewable Energy Certificate (www.green-e.org)

NOTES:

COLORWORKS AVAILABLE PATTERNS BY PRICE GROUP

GROUP A

Copa
 Equal
 Grasscloth
 Nexus
 Whirlwind
 Zest

GROUP B

Melange
 Nitro
 Ovation
 Paragon
 Pick Up Sticks
 Space Odyssey
 Spectre

GROUP C

Rain Drops
 Terrain



Mixed Sources
 Product group from well managed
 forests, controlled sources and
 recycled wood or fiber
 Call us: 1-800-368-3333
 www.fsc.org
 © 1996 Forest Stewardship Council


■ *There may be variation between printed photographs and actual samples. Actual sample can be obtained from Mayer Fabrics by faxing your request to 800-7SAMPLE (800-772-6753). The sample will be mailed the next business day. If express service is required, please include your Federal Express or UPS account number.*

■ *OFG's fabrics far exceed ACT (Association of Contract Textiles) commercial standards.*

TO VIEW THIS COLLECTION, CONTACT YOUR SALES REPRESENTATIVE.



UNICOR
320 First Street N.W. Building 400
Washington, D.C. 20534
800.827.3168
www.unicor.gov | ofgsales@central.unicor.gov

 Printed on recycled paper.

