

Bravo Freestanding Desking Spec Guide



[effective 06.15.16]

# Terms & Conditions

## Terms of Sale

### The Customer Service Center

Contact the UNICOR OFG Customer Service Center for any questions or assistance regarding the information in this price list. Our business hours are 7:30 AM to 5:45 PM (EST), Monday through Friday (excluding federal holidays). Our phone number is (800) 827-3168.

### Order Acknowledgment

UNICOR OFG acknowledges every order. Orders are accepted, filled, and invoiced based on the information in this written order-confirmation. UNICOR/OFG contracts with a third party for services and installation in support of its product(s) on the customer's behalf. Services and installation represent a separate portion of the customer's agreement. Billing will be invoiced upon shipping of product. All other services rendered are subject to payment at completion of each phase, when signed off by the customer. Payment for services and installation is due and payable upon completion of the support services. Should you note any discrepancy, please advise immediately.

Your order acknowledgment indicates a due date when your products will arrive. In the event your products are manufactured earlier than scheduled, we will ship them upon completion, providing that your purchase order states "Early Shipments Authorized."

### Order Modifications

Modification to your purchase order will be accepted up to 6 weeks prior to the due date indicated on your order acknowledgment. However, if the revision results in a change in product availability, a new due date may be set by UNICOR/OFG. Such due date adjustment may be for your full purchase order, whether or not the specifications of all line-items on it are modified. All purchase order modifications are acknowledged in writing, including the annotation of any adjusted due date(s).

Changes requested after we obtain materials for your order may be subject to an upcharge. Confirmation of your order modification will note any such additional charge(s).

### Standard Lead Time

Typical lead time for seating product delivery is 45 days after receipt of your order. However, volume orders having optional finishes or fabrics may take longer, and therefore have an extended due date on your order acknowledgment.

### Product Delivery and Pricing

We take both FOB Origin and FOB Destination orders. All products are shipped via ground transportation.

On FOB Origin orders, title/product-responsibility passes to the customer at the time of shipment. You may arrange your own transportation on FOB Origin orders, coordinating with FPI accordingly. Otherwise, your order will be shipped by common carrier at your expense.

On FOB Destination orders, title/ product-responsibility passes to the customer upon delivery to the dock of the designated point-of-delivery. Freight charges are included in the product prices listed in the FOB Destination column of this price list.

Contact your local UNICOR OFG Sales Representative for destination prices where none are given. Such destination pricing for delivery outside the continental U.S. must be negotiated based on the freight rates at the time of shipment.

Destination price is the cost of product direct to your loading dock. (NOTE: Freight charges for shipments to Alaska, Hawaii, and overseas destinations are estimated at time of order placement. We will contact you once we obtain a freight quote from our carrier to obtain approval of charges before shipping).

Installed Price includes installation plus removal of all packing material and trash. (NOTE: If total value at installation prices is under \$1,500, an additional charge may be added to cover the cost of installation).

Services, such as space-planning/design, storage, inside-delivery and installation is not addressed as part of this price list. Contact your local UNICOR OFG Sales Representative for such service-fee quotations. To locate your local UNICOR OFG Sales Representative, go online to [unicor.gov/OFGSalesReps.aspx](http://unicor.gov/OFGSalesReps.aspx)

### Product Pricing Discount

Contact your local UNICOR OFG Sales Representative for any special agency pricing or volume discounts. To locate your local UNICOR OFG Sales Representative, go online to [unicor.gov/OFGSalesReps.aspx](http://unicor.gov/OFGSalesReps.aspx)

### Special Packaging

Standard packaging varies per individual product. UNICOR OFG will accommodate your special packaging requests, however, an upcharge may apply. Contact the Customer Service Center for more information.

### Shipment Claims

UNICOR OFG products are packed to comply with carrier requirements. All shipments should be inspected by the consignee before acceptance.

The delivering carrier should be requested to record any damage or shortage of items shipped. If any shortages are discovered, please also notify UNICOR OFG Customer Service Center immediately.

Shipping damage and shortage claims must be filed with the carrier within 7 days of delivery. This applies to both FOB Destination and FOB Origin shipments. Carrier liability ends after 15 days for shipping damages or shortages.

### Concealed Damage Claims

Claims for concealed damages must be filed with the carrier within 7 days after the delivery of goods. This applies to both FOB Destination and FOB Origin shipments. Carrier liability ends after 15 days for concealed damages.

Neither UNICOR nor the carrier will be responsible for concealed damages if shipments are left unopened and/or claims are not filed with 15 days.

### Product Storage

If necessary, UNICOR OFG will store products at the factory at no expense to you for a period not to exceed 30 days, if available. Such storage is predicated on the availability of our warehouse space at the time of need.

If UNICOR OFG storage space is not available, or if you require storage in excess of 30 days, we will assist you in finding commercial storage alternatives at current market rates, at your expense.

### Customer-Delayed Deliveries

Please notify in writing the Customer Service Center at least 2 weeks prior to the confirmed due date when you cannot receive delivery of goods by that scheduled due date. We will delay the delivery at your request. However, after 30 days of such delay, you will be invoiced for the subject products whether or not delivery is extended beyond this first 30 days.

UNICOR OFG may allow up to 2 weeks for shipping. Therefore, if you do not request delayed delivery at least 2 weeks prior to the confirmed due date for arrival of your shipment, you may incur additional handling costs.

UNICOR OFG will bill you for such handling costs if you refuse receipt of the goods, or request delayed shipment in less than 2 weeks prior to the due date on your order acknowledgment.

### Product Returns

All product returns must be coordinated in advance with the Customer Service Center. Additionally, all freight or express service charges must be prepaid on return shipments. Product returns may be subject to your being invoiced for additional handling/restocking fees. UNICOR/OFG will determine and notify you of such charges upon receipt and inspection of the returned goods.

## Order Status

Call the Customer Service Center (1-800-827-3168) to obtain status of your order during order processing or the production and shipment/delivery of goods. We will give you the status based on your purchase order number and/or the UNICOR OFG work order number on your order acknowledgment.

You may also access your order status by clicking on the customer service icon on our website at [www.unicor.gov](http://www.unicor.gov)

## Invoice Payment

Payments from government agencies should be addressed to:

UNICOR - FPI  
P.O. Box 371736  
Pittsburgh PA 15252-7736

Payments from third-party or private sector companies should be addressed to:

UNICOR - LEX  
Accounts Receivable  
P.O. Box 11670  
Lexington KY 40583-3640

All general billing or specific invoice questions should be directed to the

UNICOR Customer Service Center  
1-800-827-3168

### Product Warranty

UNICOR guarantees all furniture products to be free from defect in materials and workmanship. This guarantee applies to the original purchaser of the item and is in effect upon receipt of the item. UNICOR reserves the right to determine whether a UNICOR furniture product is defective in material or workmanship, and whether the below-listed exceptions to the warranty apply. Should UNICOR determine that a UNICOR furniture product is defective in material or workmanship, and no exceptions to the warranty apply, UNICOR will then, at its option, apply one of the following remedies:

1. Issue replacement parts only.
2. Determine that replacement parts and more significant labor may be required, and repair the item.
3. Replace the item.

While we stand behind our commitment to provide the highest quality standards, there is a life expectancy of products based upon normal use, defined as being 40 hours per week by individuals weighing 250 lbs. or less (unless otherwise indicated) and not subjected to abuse, misuse or damage resulting from chemical or environmental exposure. Warranty periods are measured from date of delivery and or installation.

### Warranty Exceptions:

#### a. Missing Products

Delivery shortages and incorrect shipments must be reported within 15 days of the shipping date.

#### b. Abuse or Misuse of Products

While we stand behind our commitment to provide the highest quality standards, products have a life expectancy based on normal use. The Product Warranty does not apply to products subject to abuse, misuse, neglect, alteration, improper or unreasonable use or maintenance, negligence, accident, or exposure to inclement weather conditions.

#### c. Obsolete products with remaining warranty

For furniture items that are no longer in production or their parts are no longer commercially available to support repair or replacement of in warranty items, customers will be offered either a replacement item or a discount toward the purchase of a comparable item.

*Products have the following warranty, unless otherwise specified in the purchasing agreement:*

### CASEGOODS

**High wear components** such as casters, glides, plastic components and locking mechanisms are warranted for 10 years after the date of shipment to original owner.

### SEATING

**High wear components** such as casters, self-skinned urethane parts, plastic shells and gas cylinders are warranted for 10 years after date of shipment to original owner.

**Seating control mechanisms** are warranted for 10 years after shipment to the original owner.

**Fabric and leather** are warranted for 5 years under normal use and maintenance after shipment to original owner.

### SYSTEMS

**High wear components** such as slides and locking mechanisms are warranted for 10 years after date of shipment to original owner.

**Electrical components** are warranted for 10 years from the date of manufacture with exception of lamps and ballasts which are not warranted.

**Panel fabrics** are warranted for 5 years under normal use and maintenance to fading after date of shipment to original owner.

**Steel structure** components are warranted against defects for 5 years under normal use after date of shipment to original owner. Warranty does not apply to finishes.

### ERGONOMICS ACCESORIES

**High wear components** such as gas cylinders are warranted for 10 years after date of shipment to original owner.

Any non-standard material (COM/COL materials) selected by the customer is not warranted. Neither does this warranty apply to damage resulting from accident, alteration or misuse, as well as scratches, fading and improper maintenance. OFG assumes no responsibility for product damage resulting from improper installation, user modification or damage resulting from chemical or environmental exposure.

Wood owes its inherent beauty to variations in color, grain and texture, and therefore these variations are not considered defects. OFG does not guarantee the exact matching of grain, pattern and color to all other office products.

We have taken great care to accurately photographically reproduce finishes for our samples. However, there may be variations between the photographic and actual finishes or fabrics. To ensure the fabric selection meets your expectations, please ask your OFG sales representative to provide a sample swatch prior to making your decision.

### LAMINATE SURFACES AND WOOD FINISHES

1 year warranty on **wood finishes, laminate self edges, veneer tops or molded edge tops.** Laminate and wood finishes are not warranted against the following:

- Damage resulting from unusual environmental conditions (extreme climate, acids and moisture)
- Damage resulting from prolonged exposure to UV light
- Damage resulting from abrasive cleaners
- Damage resulting from improper storage

### Labor and Servicing

**Labor and servicing** cost are covered for 1 year from the shipping date to the original owner.

UNICOR reserves the right to request that the damaged product be returned prior to granting a remedy.

UNICOR offers no other warranty, either expressed or implied, including any warranty of merchantability or fitness for a particular purpose. UNICOR shall not be liable for consequential or incidental damages arising from any product defect.

To initiate a warranty claim, you may call or email Customer Service Center at:

- Phone: 1-800-827-3168
- Email: [unicorcustomerservice@usdoj.gov](mailto:unicorcustomerservice@usdoj.gov)

### C.O.M. Fabric Requirements

All fabric or upholsteries must be approved prior to acceptance of an order. Upon approval, a memo sample swatch must accompany the order. UNICOR/OFG assumes no responsibility for wear or defects of performance of any C.O.M. or C.O.L. supplied by sources other than OFG.

Use of C.O.M. as panel fabrics require UL approval and must be tested for approval prior to acceptance of an order. UNICOR/OFG will require three yards of the actual panel fabric to be tested prior to quoting.

All C.O.M. fabric or upholstery must be received in continuous linear yards. UNICOR/OFG requires a 5 to 10% overage clause to insure appropriate amount of coverage.

### C.O.M. Material Acceptance

UNICOR/OFG reserves the right to reject C.O.M. fabrics or upholstery that are not suitable for the intended application. Customer selecting any C.O.M. or C.O.L. takes responsibility of performance of the supplied product.

### Standard Product Overview

Bravo is a freestanding desk system. Several combinations of shapes and sizes are offered to allow for an almost infinite amount of layouts. Shapes range from rectangles to piano shapes to various conference ends. Since the system is freestanding it allows for easy changes to meet the users needs.

Bravo was designed with power and data needs in mind. Power and data can be hidden above or below the desk to maintain the clean look of the end user's office. All desks have grommets. Wire troughs and cord dumps keep cables organized and out of the way. Stanchions that can support overhead units also house electrical and data receptacles. An optional wire trough system can be installed on the back face of the desks when situations warrant it.

Bravo easily integrates with other UNICOR/OFG systems. Classic XXI, NeoClassic or Crescendo brackets can be added to the desks to allow them to support those panel systems. Power from either of these panel systems and Bravo can be easily connected when the systems are integrated. This makes future changes and additions easier to manage.

Bravo offers several options on almost every desk. All desks offer a standard modesty panel but an optional panel can be added that gives the desk a full modesty configuration. Privacy screens are available for sit-down privacy or stand-up privacy. A stackable privacy panel is also offered for environments that change occasionally. Screens can be ordered in a variety of materials to include fabrics and translucent plastic. Tool rails provide for paper and accessory management. Workstation end panels can be ordered in shorter lengths to allow for increased leg clearance.

Bravo is offered in numerous painted colors, with a wide array of laminate selections available.

# Technical Specifications

## ANSI/BIFMA

Bravo meets or exceeds the required ANSI/BIFMA X5.5-1998 desk systems test.

## Quality

All Bravo desking components shall originate from ISO 9000, ISO 9001, or ISO 9002 registered facilities.

## UL Listed

Bravo desks are listed to applicable UL standards and requirements by Underwriters Laboratories Inc. Two of the standards used to evaluate Bravo desks are UL 1286 Office Furnishing and UL 723 Standard Test for Surface Burning Characteristics of Building Materials.

## Basic Worksurfaces

Worksurfaces shall define the shape of the workstation and provide support for overhead storage, hanging pedestals, electrical componentry, and privacy screens. Worksurfaces shall be designed to integrate function and ergonomics to provide solutions that meet ANSI/HFS-100-1998 and ADA user requirements.

## Rectangular Worksurfaces

Worksurface tops shall be 1 1/8" high density particleboard with .03 or .04 high pressure laminate surface and .02 to .04 phenolic backing sheet, available in a choice of over 30 colors. Top shall be available with a flat PVC edge in a choice of 5 edge colors. Worksurfaces shall be available in 24", 30", 36", 42", 48", 54", 60" and 72" widths and 24" and 30" depths. They shall be available in a 29" height.

Basic Rectangular worksurfaces shall include 2 triangular worksurface grommets, located in the back corners of each worksurface. 60" and 72" worksurfaces shall have 3 triangular wireway grommets, two in the corners and one located near the back center of the desk. Grommets shall be color matched to the worksurface edge color. The legs shall have (4) 3.27" x 2.27" wire management ports located in the top and bottom outside edge of each back corner. Worksurface and leg grommets will be molded from polycarbonate.

Leg Assembly - Each leg assembly consists of welded and assembled components which come together to form the full leg assembly. The leg assembly is attached to the underside of the worksurfaces from above. A metal leg cover can be removed from the front of the leg to gain entry to the interior of the leg. Within the leg, there is a metal structural support that can be used to separate power and data running within the leg. A glide is attached to the bottom of the leg for up to 1 1/8" of adjustability. The desk leg - Formed of 18-gage steel, overall dimensions are 6.00 x 6.00 x 27.25.

Modesty Panel Beam - Formed of 18-gage steel, overall dimensions are 3.00 x 9.00 x length determined by size of worksurface. The modesty panel beam is attached to the underside of the worksurface and the leg assembly. The modesty panel beam allows basic cabling to be run along the width of the desk. Plastic worksurface spacers that provide a slight stand off distance between the worksurface and modesty panel beam shall snap into place to aid installation.

Data Modesty Panel Bracket - A steel bracket shall be available that will attach to the underside of the modesty panel beam near the worksurface. It will have a 1.38" x 2.70" opening to accept several different manufacturers' power and data faceplates.

Lower Modesty Panel - Optional. Formed of 18-gage steel, overall dimensions are 1.00 x 18.00 x length determined by size of worksurface. The lower modesty panel is attached to the leg assembly and will complete the full enclosure of the back of the desk.

Finish for all metal parts shall be made available in the standard enamel colors unless specified.

End Panel Assembly - Each end panel consists of welded and assembled components which come together to form the full end panel assembly. The end panel is formed of 18-gage steel and has a honeycomb core for strength and noise reduction. Overall dimensions are 1.25 x 27.00 x depth determined by worksurface size or configuration. The depth is available in three sizes based on the depth of the worksurface (24" or 30") and whether or not a transitional or full end panel configuration is desired. The end panel assembly is attached to the underside of the worksurface and the leg assembly. A glide is attached to the bottom of the end panel up to 1 1/8" adjustability.

## Rectangular Reduction Worksurface

Rectangular reduction worksurfaces shall have the same basic construction as the rectangular worksurfaces. These worksurfaces shall have a depth of 24" on one end and 30" on the opposite end. The reduction shall be accomplished with two gently curving (12" radius) arcs that change direction halfway into the width of the worksurface. Widths of 24" to 72" in 6" increments will be available.

## Executive Worksurface

Executive worksurfaces shall have the same basic construction as the rectangular worksurfaces. These worksurfaces shall have a depth of 24" or 30" with a radius edge on the back of the worksurface. The radius edge shall extend a maximum of 6" beyond the normal depth. A right and left back corner grommet will be standard. Widths available will be 60", 66", and 72".

## Corner Worksurface

Corner worksurfaces shall have the same basic construction as the rectangular worksurfaces with an additional leg assembly, modesty panel beam, and optional lower modesty panel. In freestanding applications, standard end panels must be used. If attached to another worksurface, transitional end panels may be ordered to replace standard end panels for the sides of the attachment on both worksurfaces. Transitional legs shall be available that allow additional clearance. The front working edge will have a 16" or 22" radius depending on the size of the worksurface. Depths of 24" and 30" and widths of 48" to 72" will be standard (54" width is not available). Two different widths may be used to create what is known as a square shoe desk. One side is always 48". Fifteen different combinations of sizes will be available. Three grommets, one per corner, are standard. Whenever a width is 60" or 72", a grommet will be added approximately midway of that width.

## P-Shaped and Piano Shaped Worksurfaces

P-shaped and piano shaped worksurfaces shall have the same basic construction as the rectangular worksurfaces with an additional 4" support leg and standard modesty panel. The support leg shall be attached towards the rounded front end of the worksurface. The tubular support leg will have a diameter of 4", be constructed of 14-gage steel, and have a 1 1/8" adjustable steel glide. In freestanding applications, standard end panels must be used. If attached to another worksurface, transitional end panels may be ordered to replace standard end panels for the sides of the attachment on both worksurfaces. The front working edge will have a 16" or 22" radius depending on the size of the worksurface. Depths of 60" and 72" and widths of 48" will be standard. Fifteen different combinations of sizes will be available. Two grommets, one per corner, are standard.

## D-Shaped Worksurface

D-shaped worksurfaces shall have the same basic construction as the rectangular worksurfaces with an additional 4" support leg and standard modesty panel. The support leg shall be attached towards the rounded front end of the worksurface. The tubular support leg will have a diameter of 4", be constructed of 14-gage steel, and have a 1 1/8" adjustable steel glide. The width of the top shall be 24", 30", or 36". The depth shall be available in a range from 48" to 72".

## Round Add-On Worksurface

Round add-on worksurfaces shall be available with the same edge treatments as the rectangular

worksurfaces. They shall be available in a diameter of 36" and 42". The 36" diameter round add-on will have a flat edge of 24" and the 42" round add-on will have a flat edge of 30". The single tubular support leg will have a diameter of 4", be constructed of 14-gage steel, and have a 1 1/8" adjustable steel glide. A pair of steel splice plates will be included to attach the round add-on to a pair of worksurfaces.

## 1/2 Round Add-On Worksurface

1/2 round add-on worksurfaces shall be available with the same edge treatments as the rectangular worksurfaces. They shall be available in a diameter of 48" and 60". The 48" diameter 1/2 round add-on will have one flat edge of 48" and the 60" round add-on will have one flat edge of 60". A single tubular support leg will have a diameter of 4", be constructed of 14-gage steel, and have a 1 1/8" adjustable steel glide. The 1/2 round add-on will be able to attach to a pair of 24" or 30" worksurface ends. A pair of steel splice plates will be included to attach the 1/2 round add-on to a pair of worksurfaces.

## 1/4 Round Add-On Worksurface

1/4 round add-on worksurfaces shall be available with the same edge treatments as the rectangular worksurfaces. They shall be available in a diameter of 36" and 42". The 36" diameter 1/4 round add-on will have two flat perpendicular edges of 24" and the 42" round add-on will have two flat perpendicular edges of 30". A single tubular support leg will have a diameter of 4", be constructed of 14-gage steel, and have a 1 1/8" adjustable steel glide. The 1/4 round add-on will be able to bridge a pair of identical depth (24" or 30") 90° worksurface ends. It will also be able to be attached to an appropriate matching (24" or 30") edge of a single worksurface edge. A pair of steel splice plates will be included to attach the 1/4 round add-on to a pair of worksurfaces.

## Relocatable Power Tap (RPT)

The RPT shall have a pair of outlets and be mountable in the overhead stanchions or transaction countertop stanchion. Two RPTs may be mountable per stanchion. Cord lengths available for RPTs shall be available with a cord length of 36" or 96". RPTs will provide above worksurface height power via an installed 10-wire electrical system or through the use of building wall outlets.

## 10-Wire Electrical Distribution System

The 10-wire system is available in two configurations (6-2-2 and 4-4-2). The UL label is green for 6-2-2 and blue for 4-4-2 applications. These numbers refer to the quantity of hot - neutral - ground wires configured in each system. Both the 6-2-2 and 4-4-2 systems may be brought into the system from the ceiling, the wall or floor, through the use of top feeds and base feeds. Bravo 10-wire electrical will be able to integrate with existing UNICOR panel systems (Classic XXI, Crescendo) with the addition of the appropriate connectors.

The 10-wire electrical distribution system will consist of a 10-wire harness, table to table connectors, and a 10-wire infeed kit. The 2.16" wide double sided, rigid 10-wire harness shall mount to the underside of the modesty panel beam and shall be available in widths to span the worksurface. The 30" to 66" wide worksurface harness kit shall accommodate (2) 15 amp duplex receptacles and the 72" wide worksurface harness kit shall accommodate up to (4) 15 amp duplex receptacles.

Receptacles shall be available to access the up to 6 circuits within the harness and must be ordered separately.

Both 10-wire systems are rated at 120 vAC @ 20 amps. All receptacles are rated at 15 amps. The specifics of each wiring configuration are detailed below.

**Note: The two ten wire systems (4-4-2 and 6-2-2) cannot be mixed together. The wiring systems must be separate.**

There are different receptacles for each system, and different connectors specific to each system. Keyed connectors will not allow the 2 systems to be mixed.

## 6-2-2 Configuration

The 6-2-2 configuration of the 10-wire system will have three "convenience" circuits (1, 2, & 3) which will each have their own hot wire, will share an oversized neutral wire, and will share the building ground wire. Circuits 4, 5, & 6 are "isolated ground" circuits that will each have their own hot wire, will share an oversized neutral wire, and will share an isolated ground wire.

The advantage of this system is that it will be able to have 6 circuits coming in via one top feed or base feed. This will cut down on the number of feed points on an installation. The number 4, 5, & 6 receptacles will be colored orange to designate that they are on the isolated ground, while the number 1, 2, & 3 receptacles come in the standard trim colors.

## 4-4-2 Configuration

The 4-4-2 configuration of the 10-wire system will have two "convenience" circuits (1 & 2) which will each have their own hot wire, their own neutral wire, and will share the building ground wire. Circuits 3 & 4 are "isolated ground" which will each have their own hot wire, their own neutral wire, and will share an isolated ground wire.

The advantage of this system is that all of the circuits will have their own neutral wires, and has two circuits (3 & 4) that use an isolated ground. The number 3 & 4 receptacles will be colored orange to designate that they are on the isolated ground, while the number 1 & 2 receptacles come in the standard trim colors.

## 10-Wire Power Infeed Kit

The 10-wire power infeed kit shall provide power from fixed, floor, or wall sources to the 10-wire harness. It shall include 6' of plastic covered flexible conduit. To connect the "hardwire" end of a 10-wire topfeed or basefeed to your building, use a 3/4" Romex connector on the conduit.

## 10-Wire Power Table to Table Connector

10-wire table to table connector shall consist of a fiberglass sleeved flexible harness, which provides power connections from adjoining desks. The jumper shall have a length of 27".

## Power Pole

The power pole body shall be made of extruded aluminum, 16-gage, overall dimensions are 1.73 x 3.43. It will have two cavities for physical power and data separation. Length of top feed harness is 12". The power pole cover will be made of extruded aluminum, 16-gage; overall dimensions are 1.73 x 3.43 x height determined by ceiling. A plastic trim piece will cover the area where the pole intersects the ceiling.

## Pedestal Storage

Pedestal storage for Bravo shall be provided by Opus Pedestals. 3 styles shall be available to meet personal storage requirements. Freestanding, mobile, and hanging pedestals.

Pedestals shall be available in 3 depths, 17 5/8" that may be used with any depth worksurface, 21 1/8" for maximum storage under a 30" worksurface, and 27 5/8". Multiple drawer combinations shall be available.

The 12" file drawer sizes shall have a full extensions slide arm suspensions for full access to storage space. The 3" pencil drawers and 6" box drawers shall have 3/4" extension, steel ball-bearing suspension.

Locks shall be included in each pedestal and shall be randomly keyed. Specific keying combinations shall be available.

## Freestanding Pedestals

Freestanding pedestals shall have a finished top and 4 adjustable glides. They shall be placed under a worksurface or anywhere else in the office. A counterbalance weight shall be included with each unit.

## Mobile Pedestals

Mobile pedestals shall have a finished top and 4 twin wheel hooded casters. Front casters shall be locking and back casters shall be non-locking. A counterbalance weight shall be included with certain units.

**Center Drawer**

Center drawers shall be of a formed plastic construction with a front compartment tray integral to the molding. Locks shall be included and shall be randomly keyed. Specific keying combinations shall be available. They shall attach under Bravo worksurfaces and shall be available in the 4 trim colors.

**CPU Sling**

The CPU sling shall attach to the underside of worksurfaces and accommodate a range of CPUs up to 65" in circumference and a maximum of 75 lbs. It shall provide 5 1/2" of front to back travel and 359° swivel for ease of accessibility. The CPU sling shall be available in black only.

**CPU Holder**

The CPU holder shall accommodate a range of CPUs from 2" to 10 1/2" thick and 11" to 21" tall. An optional security kit will be available that prevents tampering or removal of the CPU. The CPU holder shall be available in black only.

**Privacy Screens**

Privacy screens shall be available to provide sit down or stand up privacy within the Bravo workstation. Screens shall be 3/4" thick, 18 1/4" or 38" high, and available in widths to fit all worksurfaces. They shall be mountable to either the overhead supports (BVSSB), to the underside of the worksurface (BVSBW), to the top of the worksurface (BVSOW), or with a combination of attaching to an overhead support and a worksurface top (BVSSO). A stackable 18 1/4" high section (BVSSS) shall also be available.

Privacy screens shall be designed for straight-line applications. They shall include mounting brackets for attachment to the worksurface. Screens shall be available for straight applications in 24", 30", 36", 42", 48", 54", 60", 66", and 72" widths. The 66" and 72" widths shall consist of a pair of screens (1) 30" plus (1) 36" screen for 66" applications and (2) 36" screens with splice extrusions for 72" applications.

Screens may be used to serve 2 worksurfaces placed back to back. Privacy screens shall be useable on worksurfaces with overhead storage units to close the opening between the worksurface and the bottom of the shelf. Corner screens shall include a corner light block channel. The light block channel will also serve to align and hold the back corner together. Screens shall be available in configurations to match the worksurface application, basic worksurface, or corner worksurface.

Privacy screens will consist of two different aluminum extrusion profiles, each assembled with die-cast corner connectors to create a rectangular frame. The frames will be either upholstered or painted, depending on option. Between the two assembled frames, different core materials can be inserted. The screen material shall be made of 1/2" or 3/4" thick tackable iron core light or a 10mm thick non-tackable translucent plastic. The frame shall be made of extruded aluminum that is .060 in. thick. Overall dimensions of the frame shall be 1.40" x length and height dependent on desk size and screen height. The bracket extrusion shall be made of extruded aluminum. Overall dimensions of the bracket extrusions shall be .75" x 3.12" x length determined by screen height. Overall dimensions are dependent on screen option and height and desk size. The mounting brackets shall be formed of 7-gage steel with overall dimensions of 2.00" x 2.25" x 10.00".

**Overstorage Mounted Privacy Screen**

Same construction as above with the exception of mounting bracket and elimination of bracket extrusion and bracket insert. The mounting brackets shall be formed of 16-gage steel with overall dimensions of 54" x .92" x 12.38".

**Transaction Worksurface**

Transaction worksurfaces shall be available in rectangular and corner configurations. The construction of the worksurface will be similar to a standard worksurface except for shape and overall dimensions.

The transaction panel shall be formed of 18-gage steel and attach to the underside of the transaction worksurface. Depths for rectangular and corner shapes shall be 16". Overall rectangular widths available shall be from 24" to 72" in 6" increments. Overall corner transaction sizes available shall be 42" x 42", 48" x 60", 48" x 66", 48" x 72", 48" x 48", 60" x 48", 66" x 48", and 72" x 48".

Transaction Worksurface Support - Formed of 16-gage steel. Overall dimensions are 6.00" x 6.00" x height determined by height of transaction worksurface. Support Cover - R/C (QMFZ2), rated 94HB minimum or formed of 20-gage steel. Overall dimensions are 6.62" x 11.38".

**Overhead Support Stanchion**

The overhead support stanchions shall be formed of 16-gage steel, overall dimensions will be 6.00" x 6.00" x 19.50". A reinforcement plate (16-gage steel) inside the support shall have 4 cutouts that can accommodate either commercially available data plates or Removable Power Taps (RPT).

Overhead support stanchion covers shall be standard. The covers shall be made of extruded plastic and available in 5 standard trim colors. They will be hinged to allow access to the inside of the overhead support stanchions. A flexible rubber trim piece shall allow power or data cables to be run from the worksurface into the overhead support stanchions.

**Overhead Storage**

Bravo shall offer 2 styles of overhead storage units for use with any worksurface. The two styles are the Universal overhead and the Venus overhead. Overheads for basic rectangular worksurfaces shall attach through the grommets in the top of the worksurface. They shall have vertical wire channels that conceal the attachment and wires from the top of the shelf to the worksurface.

Shelf dividers made of powder coated steel shall be offered in 5 standard trim colors. The installation or removal of them shall be accomplished without the use of tools or fasteners.

All overheads (Universal or Venus) shall be able to be used on Classic XXI, Panel Mounted or Off Module, or Bravo. All 72" overheads will consist of a pair of 36" overheads. All 66" overheads will consist of a 30" and 36" overhead combination.

**Universal Overhead**

Overhead cabinets shall be 34" high and shall have 18 1/2" clearance between the worksurface and the bottom of shelf. The universal overhead shall be offered in widths of 30", 36", 42", 48", 54", 60", 66", and 72". The flipper door opening shall be 13" high. They shall be available with doors of painted steel, fabric, laminate, or veneer. Locks shall be randomly assigned or keyed per customer requests.

**Universal Overhead Regular Shelf**

Product Offering - The product shall be offered in widths of 30", 36", 42", 48", 54", 60", 66", and 72". The overall dimensions of the end panels shall be 16 1/2" x 15". The shelf depth shall be 15".

Construction - The end panels shall be constructed of 14-gage steel, with a powder coat finish. The end panels shall have self-locking mounting tabs formed into the back edge. The shelf shall be an 18-gage steel weldment with a powder coat finish. The front edge of the shelf shall be a PVC extrusion that also provides space for a concealed flush mount task light.

**Universal Overhead Low Shelf**

Product Offering - The product shall be offered in widths of 30", 36", 42", 48", 54", 60", 66", and 72". The overall dimensions of the end panels shall be 9 1/4" x 15". The shelf depth shall be 15".

Construction - Same as a Universal overhead regular shelf unit.

**Venus Overhead**

The cabinet sides shall be constructed of 14-gage sheet steel, while the top, back, and shelf will be constructed out of 18-gage sheet steel. Venus overheads will be offered in widths of 30", 36", 42", 48", 54", 60", 66", and 72". The top, sides, back, and shelf will be resistance welded so there are no visible weld marks on the class A surfaces (outside visible surfaces). The cabinet shall be painted one of the 5 standard trim colors. Other colors shall be available if requested. The upper door shall be comprised of extruded rigid PVC. The extruded rigid PVC will be available in the 5 standard trim colors along with translucent. The lower door shall be comprised of extruded aluminum, which shall be available in the 5 standard trim colors and many optional colors. A 10-gage hot rolled steel link arm connects the upper door and lower door.

Spring tension shall be used to assist in the opening and closing of the door. Applying pressure to the lower door opens both doors. Less than 5 pounds of force shall be needed to open both doors. The overhead door shall be able to be opened with a closed fist as well. The force and ease of opening shall make this overhead ADA compliant.

The shelf and back shall be slotted every two inches to allow for the use of shelf dividers. The underside of the shelf is also slotted with 1.5" by 1.5" slots to allow for electrical cords to run through the back.

**Various Ballast Task Lights**

Task lights shall be offered in one standard level of efficiency and cost. The standard light shall have a magnetic high power ballast with rapid start, cool white T-8 fluorescent lamp. Task lights shall attach to the underside of the shelf on overhead cabinets. Power cord length will be 9' long. Lights shall be UL listed and available in the 4 trim colors. They shall be available for all widths of Universal or Venus overheads.

**Paper Management System**

The paper management system shall address the storage and movement of files, binders, and documents. Components shall be available with integrated hooks for attachment to the work bar. The system shall be available in the 5 trim colors.

The paper management system shall include the following components: Tool Rail, Paper Tray, Diagonal Storage Unit, Vertical Storage Unit, Hanging File Folder Holder, Telephone Caddy, Accessory Tray, and a Pencil Cup.

The tool rail shall be fabricated from a powder coated aluminum extrusion with injection molded plastic end caps. The tool rail shall be attached to the workstation in one of two options. Option one is to attach the tool rail to the overhead storage supports through the use of self-locking steel brackets. Option two is to attach the tool rail to desk mounted brackets. Desk mounted brackets shall be 15.75" high, non handed, and constructed of 16-gage steel. The tool rail shall be 4 1/2" high and 1/8" deep, with the length corresponding to the worksurface width minus the width of the overhead supports. Multiple combinations of paper management units shall hang on the bar in any of 4 vertical locations. All components shall be of injection molded ABS plastic.

The paper tray shall be 2" x 9 1/2" x 14". It shall be used freestanding or suspended from the tool rail.

The diagonal storage unit shall be 2 1/2" x 7" x 12 1/2". ABS dividers shall be able to be used in either left or right positions. It shall be used freestanding or suspended from the tool rail.

The vertical storage unit shall measure 5" x 10 1/2". It shall be used freestanding or suspended from the tool rail.

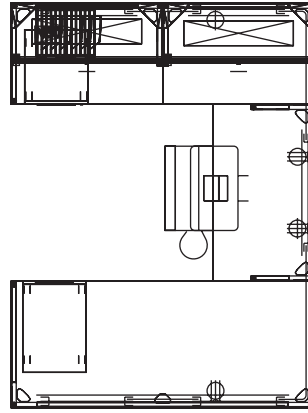
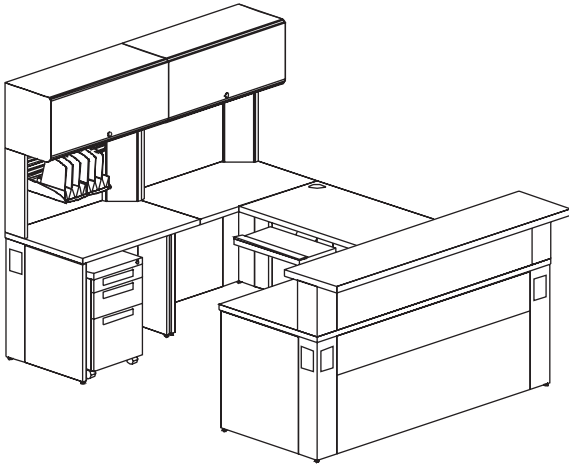
Hanging folder holders shall measure 2" x 1" x 8 1/2". They will be shipped one pair per set.

The telephone caddy shall measure 2" x 8 1/2" x 9 1/2". It will have a retractable tab to adjust to various size phones.

The accessory tray shall measure 2" x 9 1/2" x 10". It will have compartments for the storage of common items such as: stamps, small note pads, tape, pencils, and paper clips.

The pencil cup shall measure 4" x 4" x 3 1/2".

# Bravo Budget Typical



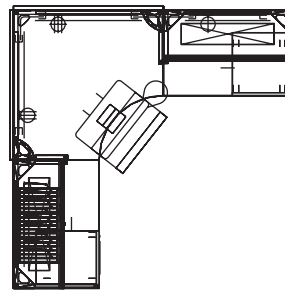
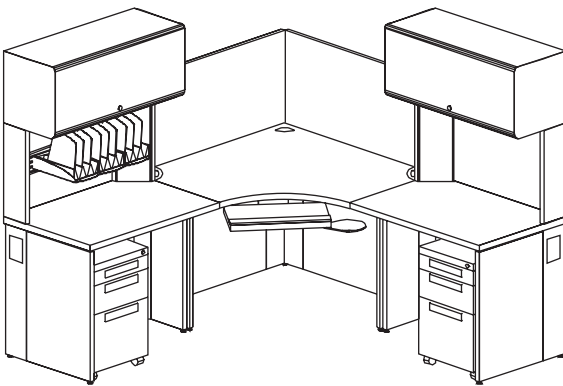
## Receptionist Station

Workspace 48 sq. ft.  
Budget Price \$3,558

Note: Budget price is based on single typical workstation. Price will decrease when workstations are clustered.

### Workstation Features:

- Laminate surfaces with flat vinyl T-edge
- Fabric overhead units with task lights
- Two mobile pedestals pencil, box, file
- Transaction countertop
- Paper management tool rail and accessories
- Articulating keyboard with mouse pad
- Powered and non-powered options available
- Wire management capabilities in stanchions
- Privacy screen



## Assistant Station

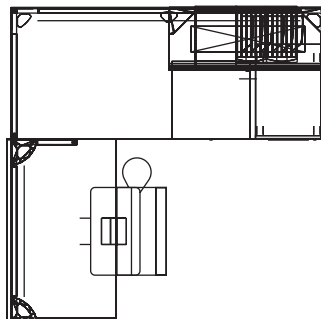
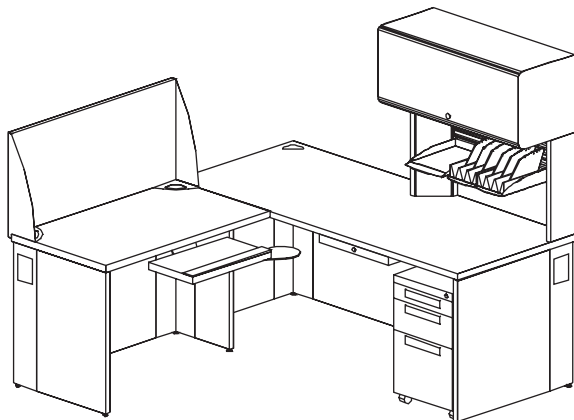
Workspace 36 sq. ft.  
Budget Price \$3,166

Note: Budget price is based on single typical workstation. Price will decrease when workstations are clustered.

### Workstation Features:

- Laminate surfaces with flat vinyl T-edge
- Fabric overhead units with task lights
- Two mobile pedestals pencil, box, file
- Paper management tool rail and accessories
- Articulating keyboard with mouse pad
- Powered and non-powered options available
- Wire management capabilities in stanchions
- Privacy screen

# Bravo Budget Typical



## Clerk Station

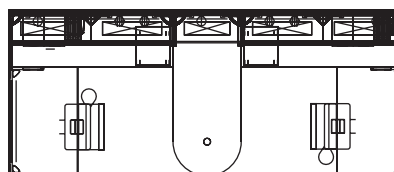
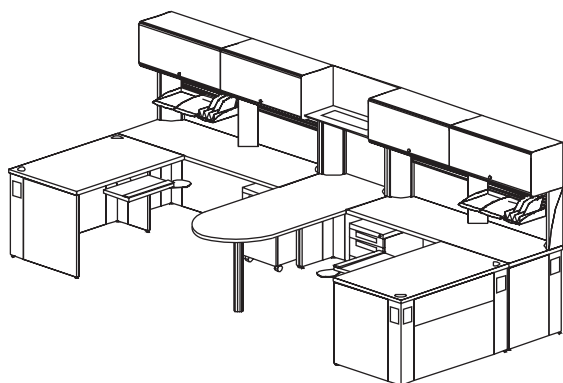
Workspace 36 sq. ft.

Budget Price \$1,733

Note: Budget price is based on single typical workstation. Price will decrease when workstations are clustered.

### Workstation Features:

- Laminate surfaces with flat vinyl T-edge
- Fabric overhead units with task lights
- Mobile pedestal pencil, box, file
- Paper management tool rail and accessories
- Articulating keyboard with mouse pad
- Center pencil drawer
- Powered and non-powered options available
- Wire management capabilities in stanchions
- Privacy screen



## Shared Station

Workspace 87 sq. ft.

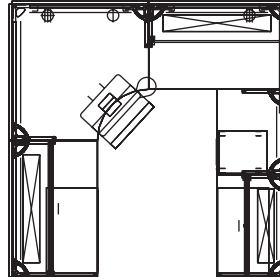
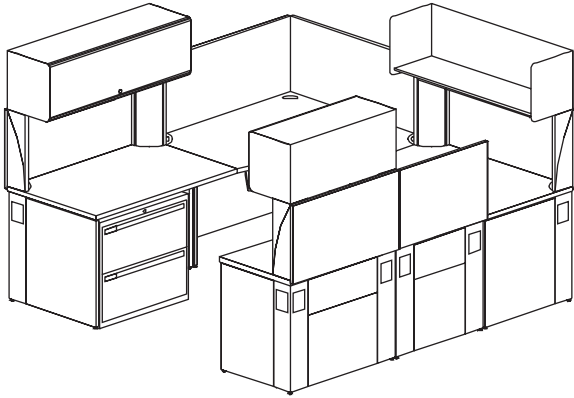
Budget Price \$5,566

Note: Budget price is based on single typical workstation. Price will decrease when workstations are clustered.

### Workstation Features:

- Laminate surfaces with flat vinyl T-edge
- Fabric overhead units and open shelf with task lights
- Two mobile pedestals pencil, box, file
- Paper management accessories and privacy screens
- Articulating keyboard with mouse pad
- Powered and non-powered options available
- Wire management capabilities in stanchions

# Bravo Budget Typical



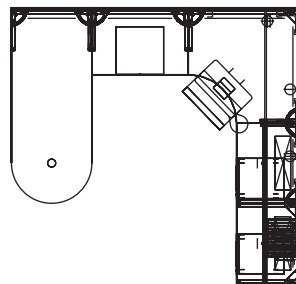
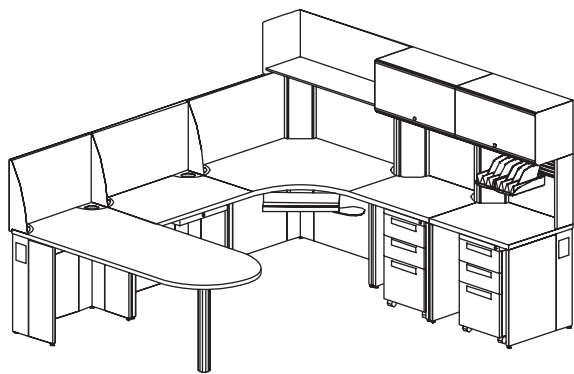
## Engineer's Station

Workspace 64 sq. ft.  
Budget Price \$4,780

Note: Budget price is based on single typical workstation. Price will decrease when workstations are clustered.

### Workstation Features:

- Laminate surfaces with flat vinyl T-edge
- Fabric overhead units and open shelf with task lights
- Mobile pedestal pencil, box, file
- Privacy screens
- Articulating keyboard with mouse pad
- Powered and non-powered options available
- Wire management capabilities in stanchions
- Two 30" wide 2-high lateral files



## Manager's Station

Workspace 92 sq. ft.  
Budget Price \$4,486

Note: Budget price is based on single typical workstation. Price will decrease when workstations are clustered.

### Workstation Features:


- Laminate surfaces with flat vinyl T-edge including peninsula top
- Fabric overhead units and open shelf with task lights
- Two mobile pedestals pencil, box, file
- Paper management tool rail and accessories
- Articulating keyboard with mouse pad
- Powered and non-powered options available
- Wire management capabilities in stanchions
- Privacy screens
- Center pencil drawer



**OFG** UNICOR  
**OFFICE**  
**FURNITURE**  
**GROUP**

*Working together to make a difference!*

UNICOR  
320 First Street N.W. Building 400  
Washington, D.C. 20534  
800.827.3168  
unicor.gov/ofg | ofgsales@central.unicor.gov

 Printed on recycled paper.



INDOOR ADVANTAGE GOLD  
FURNITURE

